

# AppsAnywhere

## Using a VPN for AppsAnywhere

Some software is only licensed for use on campus computers. If you are using your own device on or off campus (or a UWE Bristol device off campus) you will need to use **Pulse Secure VPN** to connect to licences for these packages.

**Please note:** other VPNs will not work with AppsAnywhere.



### Starting a Pulse Secure VPN connection

1. Log in to AppsAnywhere using your **UWE Bristol email address and password**.

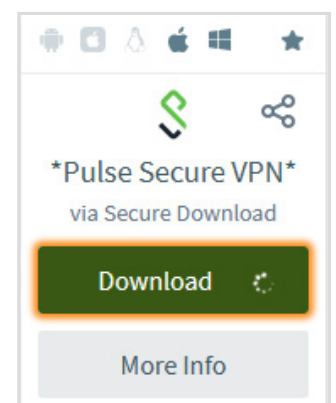
2. Type **VPN** in the search box.



3. Locate **Pulse Secure VPN** and select **Download**.

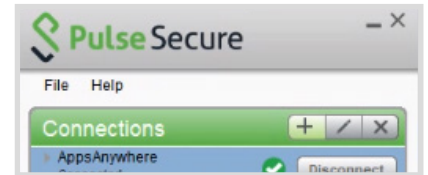
Once downloaded, open the file.

-  **Important: sign out of AppsAnywhere before connecting to Pulse Secure.**



4. Go through the Pulse Secure setup window selecting **Next**, then **Install** and then **Finish**.

5. Once the setup has finished, open **Pulse Secure** and select the **+** button to add a new connection.

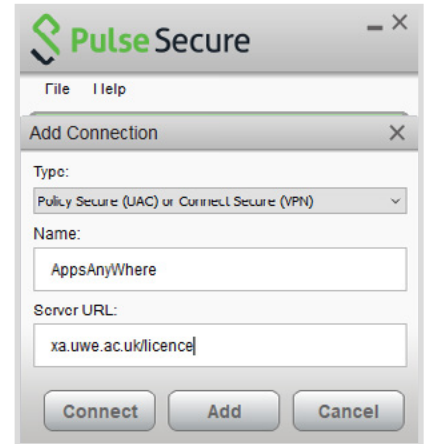


6. In the **Add Connections** window, enter the following details:

Name: **AppsAnywhere**

Server URL: **xa.uwe.ac.uk/licence**  
(must be lowercase)

Then select **Connect**.



7. In the window that opens, enter your **UWE Bristol email address and password**.

**! You will be prompted to set up Multi Factor Authentication (MFA). If you have already set up MFA, go to Step 9.**

8. After you have entered your UWE Bristol email and password, a **Microsoft Authenticator** page will open.

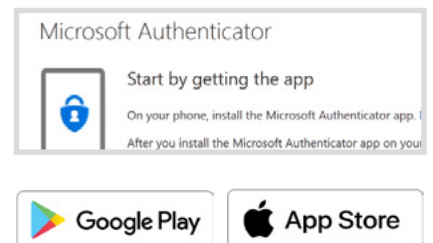
On your phone, download and install the **Microsoft Authenticator** app from **Play Store/App Store**.

Follow the instructions in the Microsoft Authenticator window on your computer.

If prompted, select **Work or School account** and select **Save**.

Use the authenticator app on your phone to scan the QR code on the screen. You will need to allow notifications and access to your camera.

You will receive a notification on your phone. Select **Approve**.





Your MFA profile can be used to protect a range of UWE Bristol services.  
Detailed instructions are on the UWE Bristol website at [go.uwe.ac.uk/mfa](https://go.uwe.ac.uk/mfa)

9. After authenticating, you will be asked for a **Secondary Password**. Enter your **UWE Bristol email password**.

Select **Connect**.

You can now sign back in to AppsAnywhere and start using your chosen program.



### Connection time limit

Pulse Secure VPN connections last for seven days and you will receive a warning notification three hours before the session is due to end.

If you require more time, you will need to reopen Pulse Secure, login, connect and go through the authentication process again.

### Software requiring a Pulse Secure VPN connection

- Abaqus
- Altair FEKO Winprop
- Altair Hyperworks
- Ansys (although there is also a local version available)
- ArcGIS Desktop
- AutoCAD
- AutoCAD Architecture
- Civil 3D
- CLion
- Esri CityEngine
- Eviews
- IntelliJ IDEA
- Inventor
- Junctions
- Keyshot
- Maple
- MATLAB 2019a
- Maya
- Minitab
- Motion Builder
- Mudbox
- Navisworks Manage
- Navisworks Simulate
- PSCAD
- PyCharm
- Recap Pro
- Revit
- Rhino 6
- Ricardo
- Robot Structural Analysis
- Solidworks
- STK Systems Tool Kit
- V-Ray for Revit
- V-Ray for Rhino
- V-Ray for SketchUp