

Please note: This is a copy of the newsletter sent to students. The formatting is a little different to the email version, due to the content being converted into a PDF. Dynamic content (content specific to Faculty/campus/level etc.) features at the end of this document but for students it's integrated into the body of the newsletter.

Exam information, financial support and more

myUWE

Support

Infopoints



Happy New Year!

The new year is finally here and we're excited to see what 2019 will bring! There'll be plenty of opportunities for you to get involved in as part of your course or alongside your studies. Whatever you want to achieve this year, we'll support you to make it happen.

For some of you the first challenge of the year will be your January exams, and we hope they go smoothly. If you do have a question or a problem contact an [Information Point](#) sooner rather than later - don't wait until the day of your exam. We'll be wishing you the best of luck!

Are you ready for your exams?

Exam information

Everything you need to know about your exams is available on our [exams web pages](#), like what to bring and what to expect.

Remember your student card

You must display your student card on your table at every exam. If you need a new one, [order one online](#) and collect it from an Information Point.

Give yourself plenty of time

Arriving early means you'll be able to find your seat, listen to announcements and adjust to your surroundings.

Check your exam timetable

Double-check your exam timetable on [myUWE](#). It's personalised to you - so don't rely on others, even if you are on the same course. They might be in a different room!

Support during the exam season

If you can't attend your exam

If you can't attend your exam due to personal circumstances, please call an Information Point on 0117 32 85678 for advice. You may be able to use the [missed assessments process](#).

Coping with exam anxiety

Remember, if you're feeling nervous, you're not the only one. Watch our [short video](#) about one student's experience of coping with exam anxiety.

Support at the ECC

Drop-in to the Yssel room between 08:45 - 12:45 and 13:15 - 16:15 to speak to a [Student Support Adviser](#) if you miss an exam, fall ill during an exam or have any other questions.

Wellbeing support

It's normal to feel stressed about exams, but if you're finding things overwhelming you can chat online anonymously with a counsellor through [Kooth Student](#).

Want to change modules?

You can request to change optional modules from 12:00 (noon) today until 00:00 (midnight) on Sunday 3 February. You can't change compulsory modules.

If you need advice on your module choices, book an appointment with a [Student Support Adviser](#).

[Request to change modules](#)

Need to get a grip on your finances?

Let's face it, January can be a tough month for many reasons - and it's not helped by money worries!

If your Christmas spending got out of control and you're dreading checking your bank balance, register with Blackbullion. You'll have access to videos and resources to help you learn good habits and get money smart.

[Register with Blackbullion](#)

Hardship grants now available

Hardship grants of up to £500 are now available for students in significant financial difficulty.

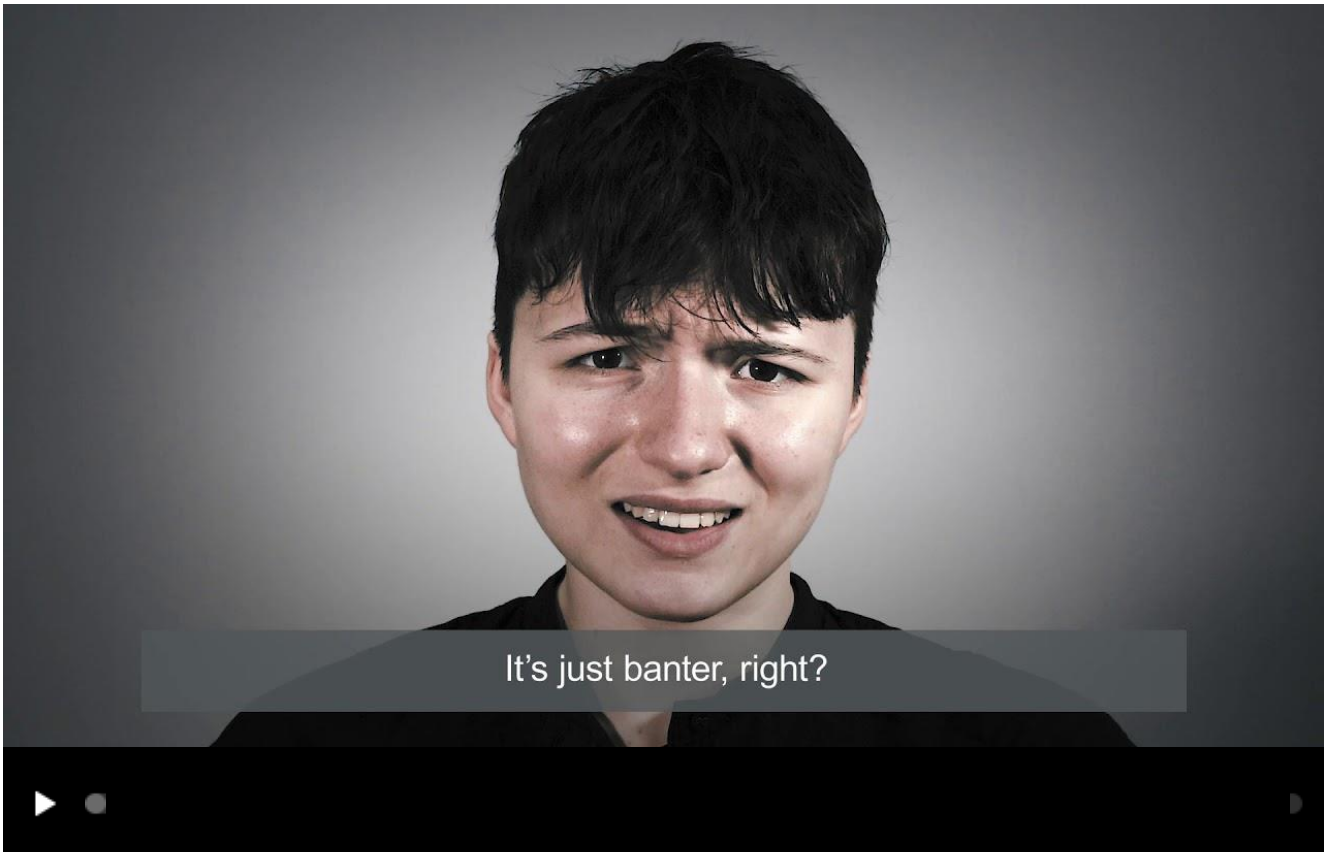
The grants are available thanks to the UWE Bristol Fund, a pot of money made up of donations from alumni (graduates) to support students in need, community projects, pioneering research and extra-curricular activities.

[Apply online now](#)

Time's running out to submit your abstract for the Student Conference

Undergraduate and postgraduate taught students from any course or year can get involved with the Student Conference. Could you win the prize for best presentation or best poster?

[Submit a 250 word abstract by Friday 25 January](#)



Have you experienced racial harassment at university?

The Equality and Human Rights Commission have launched a national inquiry to understand the types of racial harassment experienced at universities.

They want to hear from any student who has experienced or seen racial harassment at university, or helped someone who has experienced this. Please help by completing their [anonymous survey](#) - it should take around 15 minutes to complete.

Remember that [help is available](#) if you've experienced or seen something that doesn't feel right during your time with us.

[Complete the anonymous survey](#)

New M1 metrobus route has now started

The new M1 metrobus route between Cribbs Causeway and Hengrove (via Frenchay Campus and the city centre) has now started.

You'll need to buy a ticket at an iPoint or on the First Bus mTickets app before you board.

[Route, timetable and ticket information](#)

New year, new job?

Student Ambassadors are current students employed to represent UWE Bristol at events such as Open Days, UCAS Fairs and much more. They're the face of the University and are important role models to encourage people into Higher Education.

You can apply at any time to become an Ambassador, with shortlisting and interview rounds taking place during set points in the academic year.

[Find out how to apply](#)

Make sure you're clear on assessment offences

It's an assessment offence for you to try and achieve a higher grade or mark through unfair means such as cheating, plagiarism or collusion.

Full information is available on our [assessment offences](#) web page. You can also talk to [The Students' Union Advice Centre](#) for independent advice.

Six-month student memberships now available at UWE Bristol Sport

Achieve your health and fitness goals this year with a six-month membership at UWE Bristol Sport. With three membership options to choose from, there's something to suit everyone.

- Gym and classes £107.50 (Active Card membership including climbing and squash court booking, and subsidised rates on other services and facilities)
- Gym only £90.00

- Gym only off peak £62.50

The offer is available until **Sunday 10 February**. [Buy online](#), in person at the Centre for Sport on Frenchay Campus or call 0117 32 86200.

Upcoming talk: Britain - what does the future hold?

John Allan CBE, Chairman of Tesco and Barratt Developments, visits Frenchay Campus on **Wednesday 16 January** between 18:00 - 21:00 to deliver a talk entitled 'Britain – what does the future hold?'

John will discuss the key changes that will impact on Britain and our economy over the next decade.

[Register now](#)



COPING WITH EXAM STRESS

Getting back into uni life can be tricky after time off, and with term two bringing exams and assignments it can be a stressful time of year.

If you're struggling or finding things too much, speak to someone. Whether it's a friend, a tutor or a member of The Students' Union Advice Centre - it's better to get any worries off your shoulders.

Check out the Academic Survival Guide for everything you need to know about the exam and deadline season, from personal circumstances to assessment feedback.

[Read our Academic Survival Guide](#)



MOVE NEW YEAR MEMBERSHIP OFFER

Get active this year with a half-year MOVE membership.

A one-off payment of just £25 gives you access to over 30 different sports and activities until July 2019 - perfect for those get fit New Year resolutions!

You'll also have the chance to join the popular six-week 'Learn To' courses for just £10, including climbing, aerial hoop, snow sports and more.

[Buy your MOVE membership](#)



STAND IN THE LEADERSHIP RACE 2019

Take the lead and make a change to your university experience this year.

Nominations are open for the 2019 Leadership Race. We're looking for the next leaders of The Students' Union to inspire and create positive change across the University.

Passionate about the student experience? Want to develop your leadership skills? Put yourself forward now.

[Find out more](#)

Quick links

[myUWE](#)

[Academic advice](#)

[Study support](#)

[Term dates](#)

Get in touch

[Email: infopoint@uwe.ac.uk](mailto:infopoint@uwe.ac.uk)

Tel: +44 (0)117 32 85678

[More contact options](#)

UWE Bristol, Frenchay Campus, Coldharbour Lane, Bristol, BS16 1QY

Copyright © 2019 UWE Bristol

As a student, you will receive emails from the Student Communications Team. We promise not to overwhelm you and we'll only send you things that are relevant. You'll get a regular newsletter and some targeted communications. If you unsubscribe you'll miss important emails. [Contact us](#) if you have any questions.

Dynamic content

Frenchay Campus:

The Student Centre is now open

Do you need a place to get a bit of peace and quiet - especially during the exam period? The [Student Centre](#) at the Farmhouse has been refurbished and is now open.

Inside you'll find a lounge where you can curl up with a book or a board game and a kitchen to make that

all important cup of tea. To get to it, go through Wallscourt Park accommodation and follow the signs to the Farmhouse. Remember to bring your ID so you can swipe in at the door.

Library disability support drop-in sessions

Drop in to 2D90 (inside Frenchay Library) between 10:00 - 12:00 on a Thursday to chat with a member of the Library Disability Support Team.

They offer a range of support including help with accessing your reading materials and other library resources, advice on assistive software, tips on how to get the best out of accessibility features on your devices and lots more.

If you can't make the drop-in sessions you can contact the team via the [Ask a Librarian 24/7 online chat](#).

City Campus:

Changes to car parking at Bower Ashton

The building work for the new Bower Ashton Design Studios is almost complete and the new south car park (to the left of the bus stop) is now open.

If you have an annual permit you can park at either the north car park or the south car park as usual.

If you have a permission to park permit you will need to pay £3 a day to park on campus. You can either use a pay and display machine or display a scratch card from a university catering outlet. Contactless and chip and pin payment machines will be installed soon.

As a result of this new car park opening, Ashton Court car park is **no longer free** for UWE Bristol permit holders. If you wish to park at Ashton Court you will need to pay and display (£1.20 per day).

The Cricket Club car park will only be free to permit holders until **Thursday 31 January 2019**. After this date you will not be able to park at the Cricket Club.