

Please note: This is a copy of the newsletter sent to students. The formatting is a little different to the email version, due to the content being converted into a PDF. Dynamic content (content specific to Faculty/campus/level etc.) features at the end of this document but for students it's integrated into the body of the newsletter.

Changing module or course, Wild & Well festival & more

Send to a friend | View in a browser



myUWE

Support

Infopoints



This is your UWE Bristol.

Hello, October!

It's a busy month. In this edition we let you know about a range of events including [Big Green Week](#), [Black History Month](#), [Cyber Security Week](#), [Meet the Employers Fair](#), [Volunteering Fair](#) and [Wild and Well](#).

Plus we're running our usual [resilience workshops](#), equipping you to stay strong!

Want to change course or module?

If you're thinking about [transferring course](#), book an appointment with a Student Support Adviser as soon as possible to discuss your options.

You can apply to [change any optional modules](#) but you can't change compulsory modules. If you need advice on module choices, book an appointment with a Student Support Adviser.

The deadline for changing course or module is **Sunday 7 October** at midnight.

Contact a Student Support Adviser

Don't leave your online front door open

OK, so it might not be the most exciting topic on earth but it is an important one!

It's been several months since the introduction of GDPR (General Data Protection Regulation) so we thought it was time for a quick refresh of data handling good practice.

And be cautious when you receive an email which doesn't look quite right - it could be a [phishing attack](#).

[Good data habits](#)

It's Big Green Week next week!

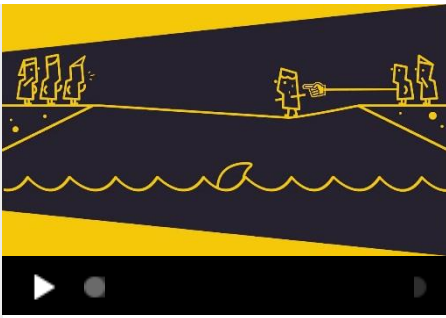
Our annual festival of eco ideas, events and smart living - a great opportunity to get out on campus and find out about the things that matter to you - plastics, climate change, food, fast fashion, sustainability in our teaching and more. From film nights to upcycling food, there's sure to be something to interest you.

[Full list of events](#)

Wild & Well festival - 25% off for students

[Wild & Well](#) is a completely new kind of festival for anyone who wants to live in a happier, healthier, more connected way. Taking place in Bristol over one jam-packed weekend - 20 and 21 October - it offers dozens of events across four themes: Move, Eat, Connect and Explore.

Plus, as a UWE Bristol student, you get 25% off if you use the discount code **UWEWellbeing** (scroll down to the bottom of the [tickets page](#)).



Speak Up

We want to create an inclusive campus where diversity is celebrated, antisocial attitudes and behaviours are challenged and any type of harassment, assault and discrimination aren't acceptable.

[Speak Up](#) if you see or hear something that's not right.

Sharpen your study skills

Referencing

You'll find guides on different [referencing](#) styles on the Library website as well as advice on how to avoid plagiarism.

Software, design and business skills

[Lynda.com](#) has thousands of free training videos to help you improve your business, marketing, software and design skills.

[See all study skills support](#)

Academic Survival Guide

Our Academic Survival Guide answers some of the most frequently asked questions about the academic regulations and procedures. It covers credits, deadlines, assessments, modules and other key aspects of your course.

[Read the guide](#)

Feel Good with Stoptober

Why not take the month of October as the perfect opportunity to give up smoking or vaping, if you currently do it?

It will improve your health, save you money and make you Feel Good!

[Read October's Feel Good Focus](#)

Apply for a £5 student art pass

Explore world-class museums all over the UK and enjoy a year of endless inspiration with friends, for your studies, or just for you. A Student Art Pass brings you free access to over 240 museums, galleries and historic houses and 50% off major exhibitions.

[Apply now](#)

Join the UWE Bristol Grand Challenge

Want to make a difference to the city of Bristol? Like coming up with creative solutions to problems? Then our Grand Challenge is right up your street.

This year the challenge is to find ways to ease homelessness within the city. You'll work with staff and public and voluntary sector professionals to pool ideas and suggest a way forward.

Join us at the [launch on Friday 19 October](#).

[Find out more](#)

Being safety aware on campus

There might be times when you see things that just don't feel right – perhaps a person in your halls you don't recognise or other students doing things you don't think should happen in your community.

[Report something which appears unsafe](#)

Dates for the diary

Volunteering Fair

This week, on Wednesday, it's our annual Volunteering Fair.

Pop along to the Exhibition and Conference

Meet the Employers Fair

Wednesday 17 October is your opportunity to meet reps from up to 170 employers at the Exhibition and Conference Centre.

Centre between 11:00-15:00 to find out how you can get involved in exciting local volunteering opportunities.

Volunteering Fair

Find all the information you need on our Fair webpage including details of our Career Fair Plus app.

Plan your visit to the Fair

Want to be a reading buddy or help run a Forest School?

Our Schools Volunteering Programme gives you the chance to be a reading or maths buddy, help run a Forest School or teach English as a second language. Our Volunteering team will work with you to get you trained up and in a role that suits you!

Find out more and apply by Sunday 14 October



Cyber Security Week - coming soon

Cyber Security Week is full of activities to help keep you, your data and your devices free from cyber crime. Put your team to the test in our escape room ([bookings now open](#)), win prizes with our i-Patch Pirates online game or have your photo taken in the Magic Selfie Mirror.

Get involved

Grants available for community projects

Grants of up to £3000 are now available for projects which enhance student learning through practical, community-based activities which have a positive impact in the areas of schools and education, sustainability, or stronger communities. Applications close on Friday 29 October.

If you have a good idea but need help finding a suitable community partner, drop us a line!

Find out more and apply

Celebrating UWE Talent - nominate yourself!

These awards celebrate the outstanding achievements of students involved in employability-related activities. Categories include Volunteer of the Year, Entrepreneur of the Year, Placement Student of the Year and more.

Nominate yourself by Wednesday 31 October

Forgotten your password on a Windows 10 machine?

From this Wednesday you'll be able to easily manage and reset your password from the Windows 10 logon screen on campus computers. Beneath the box where you enter your password, you'll now see 'Sign-in options' - from here you can access [password manager](#).

And, if you're using a campus computer on Wednesday 3 October, please remember to sign out but don't shut down – otherwise the update won't be applied to that computer.



News What's on

HONOURING OUR ROOTS, CREATING OUR FUTURE

AUGUSTA CHIDINMA NNAJIOFOR

VP Community
and Welfare



Join The Students' Union for Black History Month to recognise and celebrate diverse Black cultures, Black role models and achievements of Black people. Black History Month is a time to honour the culture, history, and achievements of African and Caribbean communities in Bristol, Britain and beyond.

[View all the events for Black History Month](#)

GIANG NGUYEN

President



JADE MARSELLA

VP Sports and Health



BUSINESS CASE COMPETITION

This competition gives you the chance to enter in teams to impress industry judges, as well as judges from sponsors and UWE Bristol.

The idea is to solve a business case problem in 24 hours, to be the best and beat the rest! Sound like a challenge you could get on board with?

The deadline to sign up to get involved is Saturday 20 October. Keep an eye on our social media for more information!

[Find out more and join in](#)

WORLD MENTAL HEALTH DAY

World Mental Health Day takes place next Wednesday, 10 October. It's a great opportunity to come together to show our support for better mental health and a reminder for you to focus on your own wellbeing.

From our Empowering Black Masculinity talk, workshop and Q+A session, to our charity bake sale, to selling green shoe laces to show your support with all proceeds going to charity, there will be plenty of things going on across the week!

[Calendar of SU events](#)

Quick links

» [myUWE](#)

» [Academic advice](#)

Contact us

[Information Points](#)

» Study support

» Term dates

Email: infopoint@uwe.ac.uk

Tel: +44 (0)117 32 85678

[More contact options](#)

Registered address | University of the West of England, Frenchay Campus,
Coldharbour Lane, Bristol, BS16 1QY

Copyright 2018 © UWE Bristol

As a student you will receive emails from the Student Communications Team.
We promise not to overwhelm you and we'll only send you things that are relevant.
You'll get a regular newsletter and some targeted communications.
If you unsubscribe you'll miss important emails. [Contact us](#) if you have any questions.

Dynamic content

EE/EN students (students who've not completed registration)

Complete your online registration on myUWE

Look for the registration tab on myUWE and follow the steps to make sure you've registered online for the 2018/19 academic year - the deadline to register is **Sunday 14 October**.

Registration guidance is available online for [new students](#) and [returning students](#).

[Complete your registration now](#)

New Tier 4 students

Visa and passport scanning

As a Tier 4 student, you need to have your visa and passport scanned. You'll also need to bring your original qualification certificates for checking.

You can do this at the [Welcome Hub](#) in Frenchay Library, which is open Monday to Friday from 09:30-16:00 (and next week from 11:00-14:00).

Returning Tier 4 students

Visa and passport scanning

As a Tier 4 student, you need to have your visa and passport scanned (you'll need to do it again this year even if you did it last year).

You can do this at the [Welcome Hub](#) in Frenchay Library, which is open Monday to Friday from 09:30-16:00 (and next week from 11:00-14:00).

EU/overseas students

Language Exchange Café - Wednesday 10 October

If you're keen to meet new people, improve your language skills or you just enjoy learning about different cultures, pop along to our Language Exchange Café.

[Further information](#)

Welcome Reception - Tuesday 16 October

To celebrate your arrival, we'd like to invite you to meet key members of university staff and current and new international students at our welcome reception!

[Book your place](#)

Register with the International talent programme

If you sign up for alerts, you'll be better connected and better able to access a range of relevant CV-enhancing, career related training, activities and opportunities with UK businesses and organisations.

[Register for alerts](#)

Communication skills for international students

The Library now offers a [programme of bookable, one-hour workshops](#) covering three strands of communication - academic style, socio-cultural issues, and vocabulary and writing in the disciplines. The programme starts on Monday 15 October and runs until Friday 7 December.

[See all study skills support](#)

Frenchay

New food options on Frenchay Campus

Peckish during the day? The Grill has opened in B block and is [serving hot and cold food](#) from 08:00 Monday-Friday.

Peckish after hours? Pizza Diretta offers [a range of stone-baked pizzas](#) from 18:00-22:00. [Order online](#) or via the app and they'll be delivered to you on campus at one of two collection points – Starbucks in Onezone or next to the taxi rank by the bus stops.

City Campus

Bower Ashton car park closed on Monday 8 October

An official opening ceremony for Bower Ashton Film Studios will take place on Monday 8 October and as a result, Kennel Lodge car park will be closed until 14:00. The Cricket Club car park will be available for you to park in free of charge if you have a UWE Bristol parking permit - but spaces are limited!

[More about parking](#)

Frenchay/Glenside

Travel with Stagecoach buses for £1

You can travel on any Stagecoach bus for £1 - just show your student ID to the driver when you pay. This includes the new and improved 77, running every hour from Frenchay Campus to Southmead, Westbury, Henleaze, Bradley Stoke and Thornbury.

[More about Stagecoach's services](#)

FBL

Talk: the role of business in a disrupted world

Kevin Ellis, Chair and Senior Partner of PwC UK, will deliver a lecture as part of the Bristol Distinguished Address Series on **Wednesday 17 October** entitled 'The role of business in a disrupted world. Why business needs to work harder to show its positive contribution to society'. All welcome!

[Find out more and register](#)