

**Please note:** This is a copy of the newsletter sent to students. The formatting is a little different to the online version, due to content being copied over to Word/Adobe. These aren't in the final newsletter; this is a guide for your information.

Dynamic content (content specific to Faculty/campus/level etc.) features at the end of this document but for students it's integrated into the body of the newsletter.

Wellbeing support, enterprise opportunities and more

Send to a friend | View in a browser



myUWE

Support

Infopoints



## Good luck with your assessments!

We hope you've had an enjoyable Easter break and are ready for the start of the assessment period.

If you've got exams coming up, our [exam essentials guide](#) covers everything you need to know – like what time to arrive, what to bring (and not to bring!) and what to do with your phone.

We're wishing you the best of luck with your exams and any other assessments you're submitting over the next few weeks!

## Check your exam timetable

Your exam timetable is personalised to you. Double-check it and don't rely on others - even if they're sitting the same exam. You might be in a different venue!

[Check your exam timetable](#)

## Remember your student card

You MUST display your student card on your desk at every exam. If you need a new one, order it online now and pick it up from an [Information Point](#).

[Order a replacement student card](#)

## Extenuating Circumstances applications

If you need to submit an Extenuating Circumstances application because you can't sit an exam, please do so as soon as possible.

Remember, if you decide to sit an exam you're making a judgement that you're fit to do so, and you cannot normally submit an application. There are only limited circumstances where you can apply for Extenuating Circumstances after attempting an exam.

If you need advice or help, please contact an [Information Point](#).

[Find out more about Extenuating Circumstances](#)

## Support at the Exhibition and Conference Centre

[Student Support Advisers](#) will be in the Yssel room in the Exhibition and Conference Centre every day throughout the exam season. They can answer questions about missing your exam, falling ill in an exam, problems with reasonable adjustments and Extenuating Circumstances.

You don't need an appointment - just drop in between 08:45 - 12:45 and 13:15 - 16:15.

Of course, you don't have to wait until the day of your exam to ask a question - it's always best to get in touch with an Information Point sooner rather than later.

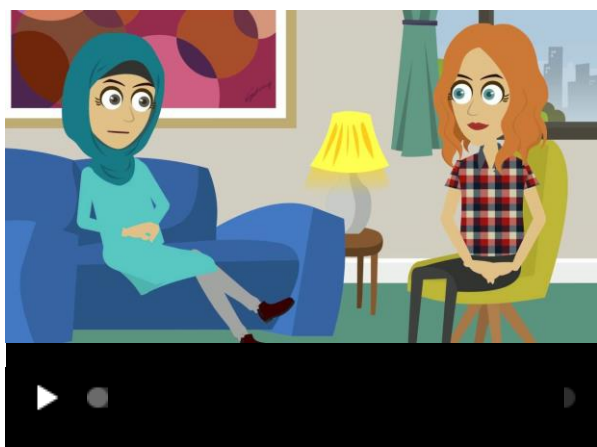
[Contact an Information Point](#)

# Looking after your wellbeing

It's completely normal to feel stressed at this time of year - but if you're finding things overwhelming, ask for help. Our [Wellbeing Service](#) are here to support you.

You can either [register online](#) and they'll get in touch to make an appointment, or contact them on **0117 32 86268** if you need urgent support.

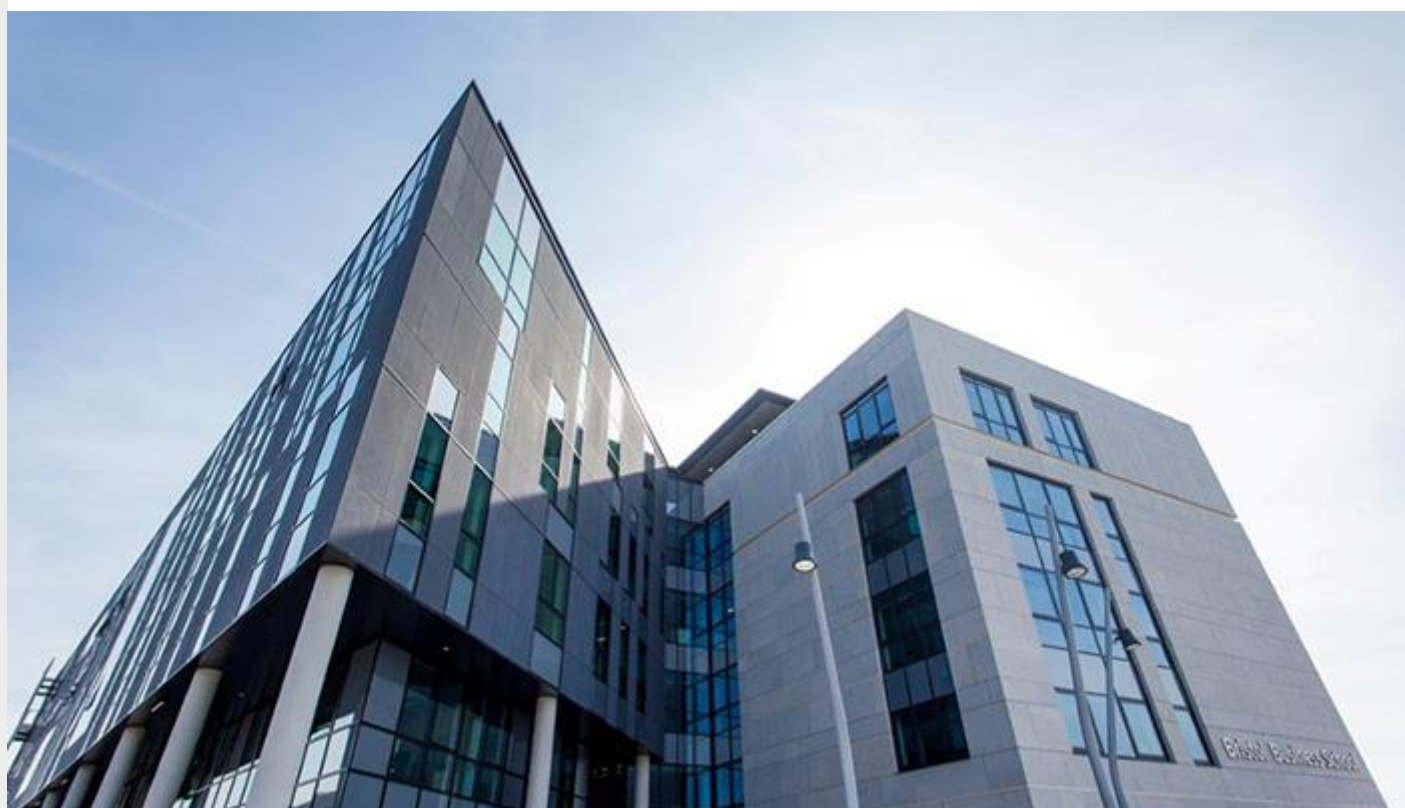
They are also starting [daily drop-in sessions](#) to help with non-urgent issues.



## Coping with exam anxiety

Remember, if you're feeling nervous about your exams, you're not the only one!

Watch our [short video](#) about one student's experience of coping with exam anxiety, and take a look at our [self-help resources](#).



# The new Bristol Business School is now open!

The new Bristol Business School - home to the Faculty of Business and Law - is now officially open! We're still working on some finishing touches, but if you're on Frenchay Campus make sure you pop in and have a look around.

## Last chance - start your business this summer

### **Innovate internships**

We'll give you £1,000 to try out your business ideas this summer. Deadline 09:00 on Friday 28 April.

[Apply now](#)

### **Run a shop in The Galleries**

Spend three months running your own shop in The Galleries, Broadmead – rent free! Deadline 09:00 on Friday 28 April.

[Apply now](#)

## Windows 10 upgrade this summer

All student computers on campus are being upgraded to Windows 10 (the latest operating system from Microsoft) between May - September.

If you're here over the summer, you might start noticing it on some machines. You'll still be able to use all the features and programs you currently use, but the desktop and start menu will look different.

How will Windows 10 benefit you?

**THE STUDENTS'  
UNION**  
AT IJWF

[News](#)   [What's on](#)

**SIÂN HAMPSON**  
VP Community  
and Welfare



## LOOK AFTER YOURSELF THIS EXAM SEASON

Make sure you take some breaks from studying this exam season. We've put together tips on how to manage stress, and we'd love to hear yours - share them using #UWEsaysrelax.

[Read our tips](#)

## CELEBRATE AT OUR SUMMER FESTIVAL

Celebrate the end of year in style at our Summer Festival on **Saturday 20 May!** We'll be taking over Wallscourt lawn (Frenchay Campus) with awesome acts, fabulous food and fairground rides.

[Buy your tickets now](#)

### Quick links

- » [myUWE](#)
- » [Academic advice](#)
- » [Study support](#)
- » [Term dates](#)

### Contact us

Information Points

Email: [infopoint@uwe.ac.uk](mailto:infopoint@uwe.ac.uk)

Tel: +44 (0)117 32 85678

[More contact options](#)

Registered address | University of the West of England, Frenchay Campus,  
Coldharbour Lane, Bristol BS16 1QY

**Dynamic content:**

**Frenchay:**

## Closure of Phaz learning zone

Unfortunately we have had to close Phaz Learning Zone until August due to a drainage issue.

A list of [alternative study spaces](#) in the Library and around Frenchay Campus is available online. You're also very welcome to work in the new Bristol Business School - there are lots of open study spaces and quiet corners if you want somewhere peaceful to work.

You can also book a study room online or quickly check if there's a free computer in the Library using our [real-time availability checker](#).

Book a study room

**Glenside:**

## Temporary closure of Glenside Library quiet floor

The quiet floor of Glenside Library will be closed for redecoration from **Wednesday 26 April - Wednesday 10 May**. There will be no access to print journals, but the majority of these are [available online](#).

The ground floor of the Library will still be open but there may be some noise disruption. Alternative study spaces include the Glenside Learning Zone next to Traders (07:30 - 00:00) or private study rooms which you can [book online](#).

Frenchay Library also has quiet and silent study spaces and is open 24/7.

**City:**

## Find somewhere to study

Looking for somewhere quiet to study? You can book study rooms at Bower Ashton, Arncliffe and Spike Island online.

Book a study room



Glenside/Gloucester:

## Postgraduate and professional open event at Gloucester

Discover the range of postgraduate and professional healthcare courses that you can study at Gloucester Campus at our open event, **Tuesday 25 April** from 16:30 – 19:00.

Register now

Gloucester (not Level 3):

## Looking for your next house?



We have rooms to rent in a house in the centre of Gloucester, just an eight minute walk away from Alexandra Warehouse and five minutes from the city centre.

Located on Southgate Street, the house has been renovated and has 13 bedrooms, 4 WCs, 4 showers and a kitchen/lounge. It has central heating and high speed internet in all bedrooms.

For more information please contact Accommodation Services on [accommodation@uwe.ac.uk](mailto:accommodation@uwe.ac.uk) or 0117 32 83601.

BBS:

## Upcoming talks

### The 'Great Financial Crisis' and the 'Great Recession'

Join us on **Thursday 27 April** for a lecture on the origins and economic policy implications of the 'great financial crisis' and the 'great recession'.

Find out more and book

### The political economy of government decision-making

Join us on **Wednesday 3 May** for a lecture on the political economy of government decision-making, taking place in the new Bristol Business School.

Find out more and book

**Level 0/1/2 Home:**

## UWE Bristol Undergraduate Internship Scheme

Gain valuable work experience and earn at least £300 a week this summer through our Undergraduate Internship Scheme.

[Find out more](#)

**FBL Postgraduate taught:**

## The new Bristol Business School is now open!

The new Bristol Business School - home to the Faculty of Business and Law - is now officially open! We're still working on some finishing touches, but if you're on Frenchay Campus make sure you pop in and have a look around.

If you still have teaching sessions left this year, some of these may take place in the new building - keep an eye on your timetable for any changes.

The new Bristol Business School is X block, and the room number system works in the same way as elsewhere in the University. So, 5X104 would be room 104 on the 5th floor.

**Level 3 and Postgraduate taught:**

## Last chance - start your business this summer

### **Free workspace and support for graduate start-ups**

Our Centre for Graduate Entrepreneurship offers 12 months free incubation space and support for start-up businesses. Deadline 17:00 on Monday 24 April.

[Apply now](#)

## In your final year?

### **Update your personal details**

We'll send your award certificate to your home address, so make sure it's up-to-date.

[Update your address on myUWE](#)



### July graduation dates

The final graduation schedules have been released. If you're graduating in July, look out for an email in the next few weeks for details on how to register and buy guest tickets.

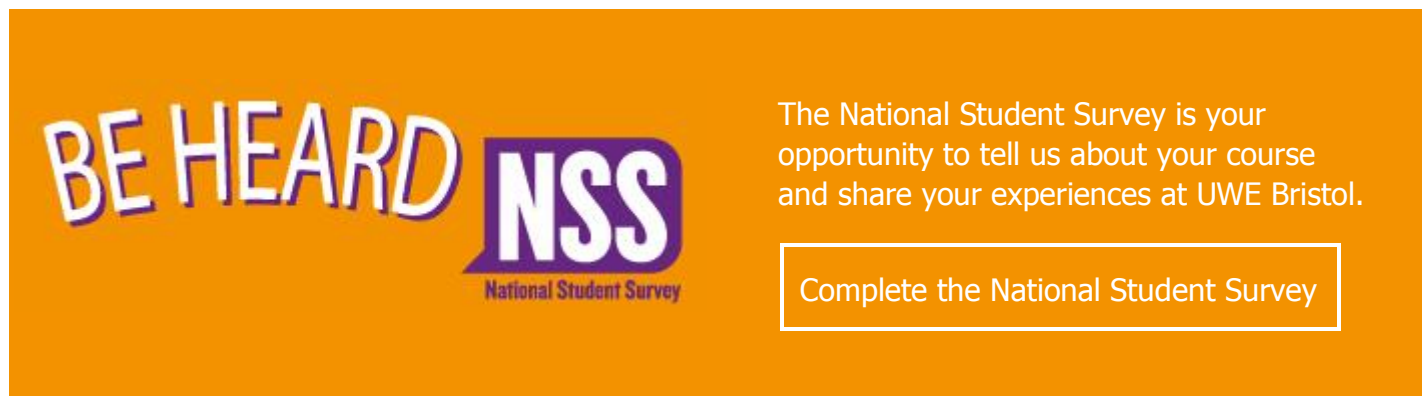
[Check your ceremony date](#)

### Download your documents

You'll lose access to our IT systems 42 days after your course finishes – so set a reminder to download everything you need once you've got your results.

[IT guidance for final years](#)

#### Level 3:



The banner features the text "BE HEARD" in large, white, stylized letters on the left, followed by the "NSS" logo in a purple speech bubble with "National Student Survey" written below it. To the right, there is a white text box with a black border containing the text "Complete the National Student Survey".

The National Student Survey is your opportunity to tell us about your course and share your experiences at UWE Bristol.

[Complete the National Student Survey](#)

#### Postgraduate taught:



The Postgraduate Taught Experience Survey is your opportunity to tell us about your course and share your experiences. Have your say and shape the future of your course and UWE Bristol.

[Have your say](#)

#### International/EU/Study Abroad:

## Trips for international students

### Theatre trip

Join us on Thursday 27 April for a trip to Bristol Hippodrome to see the world-famous Lord of the Dance.

### Cotswolds trip

Spend a day in the Cotswolds on Saturday 29 April. We'll visit Cirencester, Bourton-on-the-Water and Broadway.

### Farm visit

We're heading to the countryside on Saturday 6 May for a walking tour of Severn Beach and a buffet lunch at a farm.

### Cambridge trip

Try punting on the river Cam, visit a University college and hear about the history of Cambridge on Saturday 13 May.

Book a trip

Home/EU:

## Where will you be on Thursday 8 June?

A general election will take place on Thursday 8 June. To vote, you need to make sure you're registered **at the address where you will be living on the day the election takes place** - for example, if you will be at home for the summer you need to register with that address.

As a student you can be registered at both your home and term-time address. If you're not sure if you're registered, you can [check with your local authority](#).

The deadline to register to vote for the general election is **Monday 22 May**.

Register to vote