

**Please note:** This is a copy of the e-mail. There will be minor spacing/layout issues that have arisen from the content being copied into Word. These aren't in the final newsletter – it's intended as a guide for your information.

Degree shows, Eddie Izzard visit and more

Send to a friend | View in a browser



myUWE

Support

Infopoints



This is yourUWE Bristol.

## Summer is almost here

The end of exams is in sight and some of you may even be finished already. If you've still got a couple left and need a reminder of what to expect, check our [essential exam guidance](#).

Once your exams are over and you've got a free minute, take a moment to double check that all your personal details (e.g. home address, personal email address and phone number) are up to date in [myUWE](#).

It's particularly important if you're in your final year, as we'll send your degree certificate to your home address and contact you in the autumn to see how you're getting on in your career.

### Quick links

- » [Eddie Izzard's visiting](#)
- » [Register to vote](#)
- » [National industrial action](#)
- » [IT support](#)
- » [Degree shows](#)
- » [Stoke Lane one-way system](#)
- » [Recruitment Fair](#)

## Eddie Izzard at UWE Bristol: Stand up for Europe

As we count down to the EU referendum, come and hear Eddie Izzard talk about why he thinks we should Stand Up for Europe.

Put your questions to him on Friday 27 May between 14:00-15:00 at the Exhibition and Conference Centre, Frenchay Campus.

Register your attendance

## Register to vote in the EU referendum

If you're not already registered to vote, you must register to by **Tuesday 7 June** to vote in the EU referendum.

You might have already registered to vote at your term-time address, but if you're home for the summer you'll need to register that address so you can go and vote. Or, if you're going to be away on holiday you may wish to do a postal vote.

If you're not sure if you're already registered, contact your [local electoral registration office](#).

Register to vote online

## National industrial action 25 and 26 May

The University and College Union (UCU) is one of the three staff unions represented at UWE Bristol. It's held a national ballot of their members in relation to the 2016/17 pay negotiations they are having with the Universities and Colleges Employers Association (UCEA). A majority of members have voted in favour of both strike action and action short of a strike.

This means that some members of the University who are in the UCU may go on strike on Wednesday 25 May and Thursday 26 May.

All campuses will be open. We have contingency plans in place and these should allow us to ensure as little disruption to you as possible. We will keep you updated if the situation changes.

## Having trouble with UWE Bristol IT systems?

No matter what time of day, ring 0117 32 83612 and you'll be put through to our [IT Helpdesk](#). It's the best way to tell us if something isn't working or to get help.

During business hours, you can also visit one of our [IT Support Centres](#) or email [its.helpdesk@uwe.ac.uk](mailto:its.helpdesk@uwe.ac.uk).

## Wi-Fi networks - which one should I use?

You might have noticed there's a new Wi-Fi network called 'UWE-Authorised'. This is a new network for university computers, laptops and tablets.

You should continue to use [eduroam](#) for your personal devices - you won't be able to connect them to the new network.



## UWE Bristol Degree Shows

Be inspired by the amazing work produced by our final year students - show your support by coming along to our degree shows.

The Show: Faculty of Environment and Technology - Thursday 2 June.

The Show: Faculty of Art, Design, Film and Journalism - Friday 3 June - Wednesday 8 June.



## The Bristol Big Give is back

Moving out soon? Donate unwanted goods to charity and save them going to landfill.

Last year, 72 tonnes of donations were collected with a value of up to £125,000 - raising vital funds for over a dozen local and national charities.

You'll find a donation point by the Centre for Sport on Frenchay Campus, and at various points across the city.

The Show

Find out more

## Stoke Lane one-way system

The University has been notified that from Sunday 22 May, Stoke Lane will be closed to all motor vehicles travelling north (uphill) towards Frenchay Campus for 12 months. Travelling south (downhill) will be unaffected.

A diversion will be in that goes via the A4174 (Ring Road). Delays are inevitable, and some [bus routes are affected](#). Make sure you give yourself plenty of time if you're coming to Frenchay Campus.

A [drop-in session](#) to explain the impact of the works on Stoke Lane and the diversion will held on Monday 16 May on Frenchay Campus. Please come along if you have any questions.

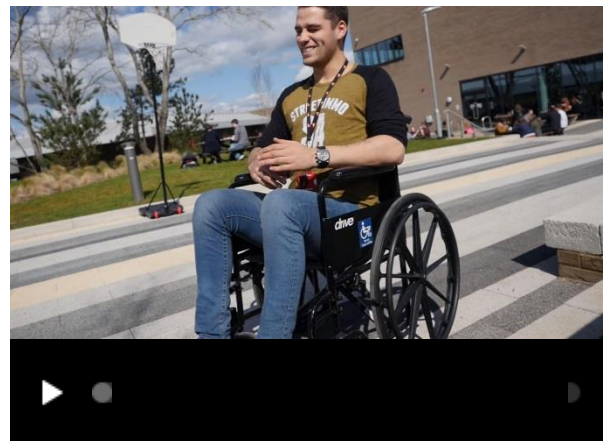
[Read more about the Stoke Lane one-way system](#)

## A look back on Disability Awareness Month

April's Disability Awareness Month was a huge success, with loads of you getting involved.

If you haven't already, check out the winners and runners up of our [poster](#) and [poetry](#) competitions (now including a video of the poetry readings).

[Disability Awareness Month](#)



Students and staff took on the wheelchair challenge to highlight some of the daily challenges experienced by wheelchair users on campus. See how they got on!

## Recruitment Fair

Join us at our Recruitment Fair on Monday 16 May to meet employers offering a number of roles, including graduate jobs and graduate/undergraduate internships.

[See the confirmed employers](#)

## Upcoming events

### Africa Week: reflections and social event

Join us on Thursday 19 May to hear about the highlights from Africa Week, and to see photos and videos from the events.

You'll also have the chance to share your thoughts on future events we're planning, and meet other students. Refreshments will be provided.

[Find out more](#)

### Extraordinary General Meeting

Changes to Students' Union at UWE constitution have been put forward that would let you submit and vote for ideas online.

Come along to our Extraordinary General Meeting on Friday 20 May to let us know what you think of the idea.

[Find out more](#)

### The Students' Union at UWE Summer Ball 2016

### National Societies Awards - see the shortlist

Celebrate the end of year and welcome the summer at The Students' Union at UWE Summer Ball on Saturday 21 May. The ball starts with a champagne reception and string quartet, followed by the main event.

[Buy your tickets](#)

The National Societies Awards is the first national event to credit societies for their contribution to students' career prospects and university experience - and it's being held right here at UWE Bristol.

[See the shortlisted societies](#)

## Quick links

- » [myUWE](#)
- » [Academic advice](#)
- » [Study support](#)
- » [Term dates](#)

## Contact us

Information Points

Email: [infopoint@uwe.ac.uk](mailto:infopoint@uwe.ac.uk)

Tel: +44 (0)117 32 85678

[More contact options](#)

Registered address | University of the West of England, Frenchay Campus,  
Coldharbour Lane, Bristol BS16 1QY

Copyright 2016 © UWE Bristol

As a student, you will receive emails from the Student Communications Team.  
We promise not to overwhelm you and we'll only send you things that are relevant.

You'll get a regular newsletter and some targeted communications.

If you unsubscribe you'll miss important emails. [Contact us](#) if you have any questions.

## Dynamic content

### Level 3 students

## Final years - your access to IT systems

Your access to most university IT systems (like myUWE and Blackboard) will stop 42 days after completion of your course. Once this happens, you won't be able to access:

- Your results, notification of credit, assessment marks or assessment feedback
- Your [Higher Education Achievement Report](#)

- Your UWE Bristol Futures Award certificate
- Your H drive
- Your OneDrive account

Set a reminder to download everything you'll need from the university IT systems once you've got your final results.

IT guidance for final years

## UWE Bristol: it doesn't end at graduation

When you graduate you're no longer a student - you're one of [UWE Bristol's alumni!](#) You'll join a huge community of former students, both in the UK and internationally.

We'll help you stay in touch with each other, and offer you lots of great [alumni benefits](#) so you can continue your lifelong connection with UWE Bristol.

## Postgraduate and professional open event

Our postgraduate and professional courses will improve your career prospects, whether you want to specialise in your field or completely change direction.

Find out more at our [postgraduate and professional open event](#) on Wednesday 18 May.

Register now

## Not sure how to fund a Master's course?

Postgraduate loans of up to £10,000 are available to help you pay for a Master's course and support your living costs while you study.

Student Finance England talk you through everything you need to know in couple of short videos.

See the videos

## **Level 3 Education students**

# Education professional development courses

Our Education professional development courses can help you further your knowledge and understanding of your chosen field.

There are a range of topics available, which can be studied as a standalone course or put towards the full MA Education course at a later date.

See all courses

## **FBL students**

# New Faculty of Business and Law building

Last week we celebrated construction reaching the top floor of the [new Faculty of Business and Law building](#).

The new building will include two showcase law courts, a city trading room, IT suites, social spaces and more.

The ceremony also gave us a great opportunity to see Frenchay Campus from above - [check out the photos](#).

## **City Campus students**

# Redeveloping Bower Ashton

You've probably already noticed the construction work at Bower Ashton - work has started on our new building.

The new studios will provide industry standard production and post-production facilities, technical workshop spaces, tutorial rooms, a new central loans facility and more.

We'll be doing everything we can to limit the disruption to you during the works.

## Arnolfini nominated for a major national prize

The Arnolfini is one of five museums and art galleries across the UK to be shortlisted

## Museums at Night - bring it to Bristol

Bristol venues (including Arnolfini) are up against other national museums and



for the Art Fund Prize for Museum of the Year 2016.

We'll find out if Arnolfini has won on Wednesday 6 July.

[Find out more](#)

galleries to host events in October's Museums at Night Festival.

Vote by 21:00 on Saturday 14 May to bring contemporary artists to Bristol.

[Vote now](#)

### Glenside and Gloucester students

## Glenside Library summer refurbishment - borrow your books now

We're refurbishing Glenside Library, to give you more space to study and more computers to use.

To allow us to do the work some parts of the Library will be closed from **Monday 23 May**, but alternative study spaces and computers will be available.

Physical collections, such as books and anatomical models, will not be available. Borrow items by **Sunday 22 May** if you need them over the summer.

The Library help desk will remain open and staff will be here to help you during the works.

[Find out more](#)