

**Please note:** This is a copy of the e-mail. There will be minor spacing/layout issues that have arisen from the content being copied into Word. These aren't in the final newsletter – it's intended as a guide for your information.

Exam guidance, voting, Disability Awareness Month

Send to a friend | View in a browser



myUWE

Support

Infopoints



## Hello!

April starts tomorrow and that means that it's [Disability Awareness Month](#) when we'll be showcasing the support available and celebrating the talent and success of disabled people here at UWE Bristol.

There's loads of events planned, including wheelchair challenges and emotional resilience workshops. Try your hand at [writing poetry](#) or [design a poster](#) to be in with a chance of winning a £75 cash prize.

### Quick links

- » [Register to vote](#)
- » [Get exam-ready](#)



## Register to vote

We have elections coming up shortly. If you live in Bristol, you can vote in the Mayoral and local elections; if you live in Bristol or South Gloucestershire you can vote in the Police and Crime Commissioner elections and the EU referendum.

Registering to vote takes less than 5 minutes and the deadline to register is **Monday 18 April**.



## Get exam-ready!

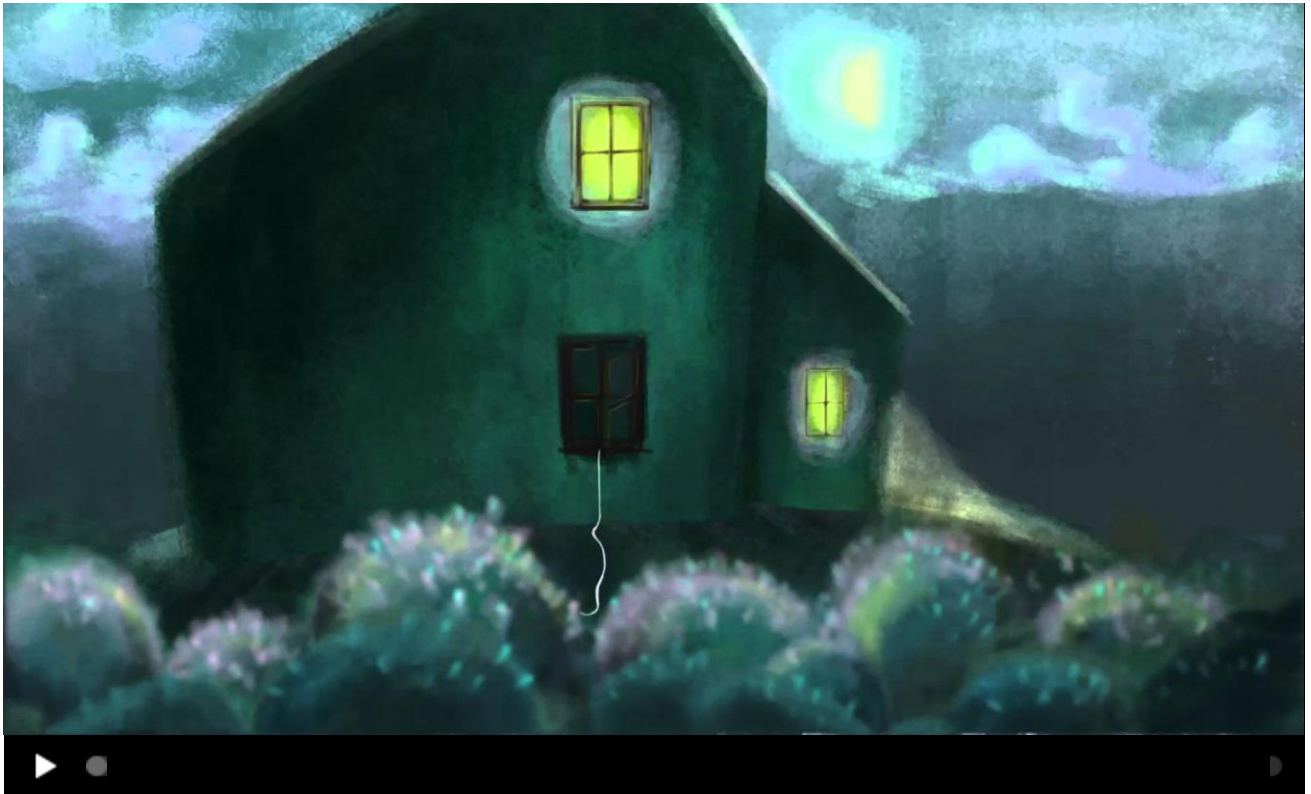
We want you to do your best in your exams, so we're running a range of study skills sessions, including planning your revision and top tips for academic essay writing. We've also put together an Introduction to Exams online workbook which will give you all the essential exam information you need.

See the full list of study skills sessions  
Introduction to Exams workbook

## In case you missed it...

### Animation students win second place in competition

Two of your fellow students have been awarded second place in a competition run by TV Licensing and the BBC highlighting the reasons people give for not paying for a TV licence with their video 'I Steal My Neighbour's Signal'.



Do you have a good news story to share? Is there something you'd like other students to know about?

Let us know!

## Quick links

- » [myUWE](#)
- » [Academic advice](#)
- » [Study support](#)
- » [Term dates](#)

## Contact us

Information Points

Email: [infopoint@uwe.ac.uk](mailto:infopoint@uwe.ac.uk)

Tel: +44 (0)117 32 85678

[More contact options](#)

Registered address | University of the West of England, Frenchay Campus,  
Coldharbour Lane, Bristol BS16 1QY

Copyright 2016 © UWE Bristol

As a student, you will receive emails from the Student Communications Team. We promise not to overwhelm you and we'll only send you things that are relevant. You'll get a regular newsletter and some targeted communications. If you unsubscribe you'll miss important emails. [Contact us](#) if you have any questions.

## DYNAMIC CONTENT

### Final years

## Council Tax exemption

As a final year student, your council tax exemption will end on the last day of the summer assessment period, Friday 20 May. Check the [council tax factsheet](#) if you have any questions!

## Award ceremonies

We're working out the schedule for the summer award ceremonies and we'll email you in April with a personal invitation to your ceremony. Keep a look out for your invitation!

## Update your personal details

Before you leave make sure you update your contact details in myUWE. We'll post your award certificate to your home address, and also give you a call in the autumn to find out how you're getting on in your career.

[Update your details](#)

### Levels 0, 1 and 2

## Complete the Undergraduate Survey

Time is running out for you to tell us what improvements you'd like to see here. If you complete the survey and leave your email address at the end, you'll go into the prize draw to win one of ten £100 vouchers to either Love2Shop, Amazon or Ticketmaster.

[Complete the survey](#)

EU and International students

## International Talent Scheme

Would you like to use your skills and knowledge as an international student, enhance your CV and improve your employability, whilst earning money at the same time?

If so, get involved in the [International Talent scheme](#) – opportunities include translation and interpretation, researching and identifying new markets, and liaising with suppliers, clients and customers in overseas markets.

Register for alerts

Glenside and Gloucester

### Lunch and learn

Come and find out what it's like working on the bank whilst studying. Sally Wilmhurst, the clinical lead for bank staffing in Avon and Wiltshire Partnership (AWP) is our speaker.

**Tuesday 5 April**  
**12pm-1pm, 1B27, Glenside**

It's free to attend - just make sure you bring your lunch with you!

### Death café

The Occupational Therapy society are hosting 'Tea, Cake and Death', giving health care students the opportunity to have a professional conversation around death.

**Monday 11 April**  
**4.30pm-6pm, Glenside Student Centre**

Cake will be on sale and all profits will go to St. Peter's Hospice.

Glenside and Gloucester, Level 3

## Postgraduate Open Evening

Are you considering postgraduate study? Gloucester campus are hosting our next Nursing and Midwifery postgraduate open event on **Wednesday 14 April** (4.30pm-6.30pm). Come along and find out about post-qualifying, postgraduate and professional development health courses.

Book your place

## Software workshops

Staff at the EPI Centre (0F16) have lined up a series of software workshops this term. There's only 13 places per workshop so [book your space now](#) if you're interested!

- Wednesday 13 April: Introduction to Web Design using Weebly
- Wednesday 20 April: Introduction to Drawing in Illustrator
- Wednesday 27 April: Introduction to video editing in Premiere

## Hand tools and ladders

From Monday 4 April, if you need to borrow any hand tools and ladders, they'll be available for loan from the central loans desk in D block (Media Centre).

This includes:  
adjustable spanners, Allen keys, clamps, cordless drills, drill bits, ear defenders, extension leads, glue guns, goggles, hammers, paint scrapers, pliers, screwdrivers, spirit levels and tape measures.

## In Between Time seeking emerging artists

In Between Time is seeking 6 emerging performance artists as part of [IBT17's New Bloods Platform](#) - those working in areas such as live art, dance, digital and visual art. Your work should be able to be presented for under £500. If you're selected, you'll take part in the festival in February 2017.

Apply by Sunday 17 April