

Please note: This is a copy of the e-mail. There will be minor spacing/layout issues that have arisen from the content being copied into Word. These aren't in the final communications. It is intended only as a guide for your information.

Results, coping with exam stress, a pint of science and more // [View in a browser](#)



GENERAL ELECTION TODAY!

Today's the day – you have until **22:00** tonight to go to your polling station and vote in the General Election! Once you've voted, why not be one of the first to find out the result at UWESU's [General Election All-Nighter?](#)

When will I get my results?



The marks you have been given throughout the year are provisional and subject to moderation, so may go up or down before they are confirmed. Your final confirmed marks and decisions will be visible in [myUWE](#) on the [results publication date](#).

Extenuating circumstances



If you experience something major that affects your ability to sit an exam or submit a piece of coursework, you may be eligible to apply for [extenuating circumstances](#).

The UWE website has guidance on:

If you're worried about your results, don't fret! Our [Student Support Advisers](#) are here to talk through your options. You can book an appointment with them via any [Information Point](#).

More information about results is available on the [assessment FAQs](#).

- how extenuating circumstances can help
- how to apply
- when to submit your application and deadlines to be aware of

Contact an [Information Point](#) if you have any questions.

Coping with exam stress

Exams can cause you to feel stressed, anxious or nervous – this is a natural reaction to a demanding situation. The UWE website has some [tips](#) to help you prepare, including:

- Make sure you take revision breaks when your concentration dips, no matter how pushed for time you feel.
- Allow yourself some fun and relaxation – doing something you enjoy will help to recharge your batteries.
- In the exam itself, breathe calmly and read each question twice. Start by answering the question you feel most confident about. Try not to worry if your mind goes blank - leave space to go back to the question later.

If you're finding things a little too much and would like to talk to someone, remember [The Wellbeing Service](#) is here to help. You can [register for an appointment](#) online, or call **+44 (0)117 32 86268** for urgent support.

Staying safe on campus



Please take care when walking or cycling around campus, particularly if there is building work.

If you see any accidents, near misses or hazards, please report them to a member of staff nearby (e.g. any [Information Point](#)).

Details of the nearest First Aiders are displayed in every classroom and near staircases (see green headed A4 notices).

In an emergency, dial **+44 (0)117 32 89999**.

Secure your bike



Although crime remains low on our campuses unfortunately bike theft continues to be a problem, particularly on Frenchay.

Cable locks are often targeted, so one simple step that you can take to reduce the chance of becoming a victim of theft is to invest in a **D lock**. Gold and silver standard solid D-locks are available at the Students' Union shop (Frenchay) for £19.99.

If you see anything suspicious, contact the 24 hour UWE Security Team on **+44 (0)117 32 86404** and they will respond immediately.

A pint of science - research in the pub!



18TH - 20TH MAY 2015

The Green Entrepreneur Business Challenge



Monday 18 May – Wednesday 20 May

The [Pint of Science Festival](#) is all about interesting and fun talks on the latest science research – in the pub!

Some of our very own UWE researchers are taking part, including Chris Alford ('[Totally Addicted](#)'), Richard Cheston ('[Maladies of the Mind](#)') and Praminda Caleb-Solly and Laura Fogg Rogers ('[Rise of the Machines](#)').

Get your tickets from the [Pint of Science website](#).

Wednesday 10 June - Friday 12 June

How can we ensure our parks and green spaces are accessible in an urban environment?

Take part in a 2.5 day enterprise boot camp, where you'll work in teams to design a business solution to this real-world environmental challenge. You'll then have the opportunity to pitch your ideas for a **£250** prize.

[Find out more and register >>](#)

The UWE Charter >>

Your employability

Whether you're graduating this summer or just looking for work experience, UWE can provide you with [career planning information](#) and opportunities to find internships, placements, part-time work and graduate jobs. Visit the [UWE Charter](#) to find out more.

Follow us



[Information Points can help answer your questions >>](#)

Talk to us

The Student Communications Team is new and we want to hear from you. If you have any feedback on our current communication channels or how you think they could be improved, please [contact us](#).

Copyright 2015 © UWE Bristol | You are receiving this e-mail as you are a current UWE Bristol student. It is important that you are engaged with your course and your university. You will receive yourUWE at least monthly.

Go online for more information about our [e-mail privacy policy](#)

Registered address | University of the West of England, Frenchay Campus, Coldharbour Lane, Bristol, BS16 1QY - United Kingdom

Dynamic content

Final years:



Life after university is exciting, but can be a bit daunting, too! UWE is here to help you prepare, with a range of information from award ceremonies to degree classification.

Before you go, check your personal details are up to date on [myUWE](#). We'll be sending your [Award Certificate](#) to your home address - so you should update this by **Monday 15 June**.

[Support and information for final years >>](#)

Careers services for graduates

Did you know that you can use UWE's [career services](#) for **up to three years** after graduation? You can book an appointment with an adviser and search or apply for opportunities through [InfoHub](#).

To log in as a graduate, you'll need to either:

- reactivate your InfoHub account through the 'Forgotten your password?' link, if you graduated less than 12 months ago and you can still access your UWE e-mails. We'll send a password reset e-mail to your UWE e-mail account, and you can then log in. We recommend you then update your profile with an alternative e-mail address for future access (as your UWE e-mail will be deactivated 12 months after graduating).
- Complete the Lost Account form, if you graduated more than 12 months ago or if you can no longer access your UWE e-mail.

If you're having difficulty, contact the InfoHub team.

Are you thinking about further study?



Come along to one of our [postgraduate and professional open events](#) in May and June, including course-specific events for Nursing, Midwifery and Allied Health Professions and Law.

Academic staff, as well as staff from Admissions, Careers and Finance will be on hand to answer any questions you have. You'll also have the chance to meet some postgraduate and professional students, to hear what it's really like to study at this level.

Look out for the UWE Bristol Graduate Survey



In the autumn, we'll be contacting you to find out what you've been up to since finishing your studies. It doesn't matter whether you're in paid work, volunteering, working on a portfolio, studying or taking some time out – we love to hear about all the different things our graduates are doing!

So we can get in touch with you, make sure you update your personal details through [myUWE](#) before you leave, including your home address and personal e-mail address.

Come along to the Graduate Career Launch

Wednesday 20 May, 10:00 – 15:00, E-Zone Frenchay campus

Kick start your job search at UWE's [Graduate Career Launch](#). You'll have the opportunity to develop a high-impact CV, learn tips for successful applications and interviews, and also find out how your personality might affect your career choice.

Frenchay:

Staying safe on campus

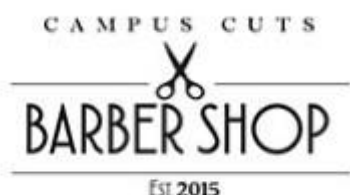
As building work continues, please take care when walking or cycling around Frenchay campus.

If you see any accidents, near misses or hazards, please report them to a member of staff nearby (e.g. any [Information Point](#)).

Details of the nearest First Aiders are displayed in every classroom and near staircases (see green headed A4 notices).

In an emergency, dial **+44 (0)117 32 89999**.

Campus Cuts barber shop



Frenchay's very first barber shop, [Campus Cuts](#) is now open in W block. Run by students, it's more convenient than going into town, and cheaper, too!

Drop in between 14:00 – 18:00 on a Tuesday or Friday – you don't need an appointment.

Gloucester:

Get your UWE Gloucester hoodies!

You can now order UWE Gloucester hoodies through the Students' Union [online shop](#). They cost £24.99 and are available in three colours.

Bower Ashton:

Your thoughts: Bower Ashton refurbishment

What do you think about the refurbishment of the A Block courtyard? Share your experience of this new social and learning space by [completing a survey](#) by **Friday 5 June**. Your feedback will help to inform the design of future redevelopment projects at UWE.

[Find out more about the Bower Ashton redevelopment >>](#)

Bower Ashton years 1 and 2:

Explore the Arnolfini



Curious to have a look around Arnolfini? We'll be holding an open house on **Wednesday 20 May** from 12:30 to 16:30. This will give you a chance to check out the top three floors of Arnolfini. They haven't been refurbished yet, but you'll be able to see the plans and visit the spaces that you may be using from September. No need to book, just show up.

FBL:

Support for Business and Law students

Even though your lectures have finished for the term, the Academic Success Centre (ASC) is still here to help! Book via the [ASC page on InfoHub](#) for support with issues such as exam preparation, coursework writing, or to arrange one-to-one sessions with academic staff.

The ASC will be open until the end of the resit period (24 July), and then will re-open in September. If you'd like to see a member of academic staff during this time, please contact [Catherine Lai](#).