

# INTERNATIONAL STUDENT ACCOMMODATION GUIDE 2020



**THE STUDENTS'  
UNION**  
AT UWE

The Students' Union at UWE, in conjunction with UWE Global Centre, have put together this handy guide for all international students coming to UWE Bristol.

.....

## University Allocated Accommodation

### On campus halls

Frenchay Campus has bed spaces for over 2800 students, and there is also accommodation on the nearby Glenside Campus. Accommodation in halls includes bills, so the price you see is the price you pay. If you want to live in University allocated accommodation, you need to apply by **8 June 2020** in order to guarantee your room

### City centre managed halls

If you want to live in halls in the city centre, then you can consider the halls managed by Unite Students who work closely with the University. You apply for city centre halls through UWE Bristol, but Unite will be your landlord so all payments will be made to Unite. Again, the price for your room in halls will be inclusive of bills.



You will find more information on the accommodation pages of the [UWE Bristol website](#).

There are also halls in the city centre managed by other private companies. The Students' Union Advice Centre can give you information about other halls providers.

## **Private accommodation**

Bristol is a big student city and there is a lot of student accommodation, but knowing where to look can be a bit tricky when you are overseas. The Students' Union Advice Centre is working with [Studentpad](#), an online accommodation platform, to help you in your search for student houses, flats, and rooms to rent in Bristol, and the surrounding areas. Living in a shared house is generally cheaper than living in halls, but you need to remember to budget for utility bills on top of your rent.

## **UWE Find a Flatmate**

This Facebook page was set up by The Students' Union Advice Centre to help connect students who are looking for accommodation – there are lots of posts from students who are looking for one more person to fill their house.



If you put 'Bristol student accommodation' into Google then you could feel very overwhelmed with all the search results.

## Here are some top tips to help you

- 1.** If an agency is renting a four bedroom house, then they probably want to rent to a whole group and not individuals. So if there are other students in your country coming to UWE Bristol, try to get together with them and search as a group.
- 2.** Ideally, you want to live near to the campus you are going to be studying at, so make sure you understand where the property is and whether there are good transport links to help you get around. You can find information about some of the popular student areas on [The Students' Union website](#)
- 3.** How much is the rent? What other fees do you have to pay? As a guide, a room in a shared house is about £400 - £500 plus bills and a deposit could be a month's rent. Other fees can vary between agencies so make sure you understand what you are being charged from the beginning.
- 4.** Budgeting? Use [Blackbullion](#) to help you manage your money. It's an easy to use learning platform designed to help you develop essential money skills, and it's FREE for UWE students.
- 5.** Most agencies will ask you for a guarantor – this is a person who will pay your rent if you don't. Many international students find this hard because the guarantor has to be UK based. There are two companies who can act as a guarantor for you, for a fee of about £300; [Housing Hand](#) and [UK Guarantor](#).
- 6.** Don't pay anything or sign anything until you have read through all the paperwork, and make sure you understand whether any monies paid are refundable.

7. The Students' Union Advice Centre can read your tenancy agreement through **BEFORE** you sign it, so simply email it to us.



**UWE Global Centre**



We are looking forward to welcoming you at the University and wanted to share with you some useful tips regarding accommodation!

If you have not already done so, please apply for [university-managed accommodation](#). The University offers accommodation on campus, as well as in the City Centre, and you will have received an accommodation message via your Welcome website encouraging you to apply.

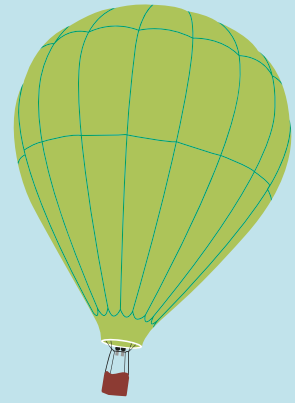
You can find some useful accommodation websites listed [here](#) and throughout this booklet. To keep your options open, please also look at private accommodation options in the city of Bristol.

It is very important that you find accommodation before arriving in the UK, as the University cannot offer you a room whilst you search. So please arrange temporary accommodation if needed (i.e. to stay in an [Airbnb](#) or hotel).

Our team is available to answer your questions and support you while you study at the University. If you would like some guidance or help in your accommodation search, please fill out this [short questionnaire](#). **Please check your email account regularly for our updates.**

Please contact [globalstudents@uwe.ac.uk](mailto:globalstudents@uwe.ac.uk) if you have any questions and follow our Facebook page [@uweglobal](#) for updates.

## Key terms to know



**En suite:** room with a bathroom

**Joint tenancy:** one tenancy that all tenants sign; all tenants are jointly responsible for the rent and the property

**Individual tenancy:** a tenancy that only you will sign

**Inventory:** a list which details all of the items in the house

**Deposit:** a sum of money paid to cover unpaid rent and damage to the property, this is refundable, unless there are any deductions at the end of the tenancy

**Deposit protection scheme:** all students who sign an Assured Shorthold Tenancy (AST) must have their deposit protected in one of three government-backed tenancy deposit schemes. This means that if there are any disputes about the deposit at the end of the tenancy, then the scheme holding the deposit can help to resolve any issues

**Fixed term:** the length of time the tenancy is for, i.e. September until June – you are committed to the tenancy for the fixed term

**Assured Shorthold Tenancy (AST):** the type of tenancy you will probably sign, this is the most common tenancy

**Guarantor:** a person who signs to say that they will pay your rent if you don't



## How to avoid a scam



**Rental fraud happens when would-be tenants are tricked into paying an upfront fee to rent a property.**

In reality, the property does not exist, has already been rented out, or has been rented to multiple victims at the same time. The victim loses the upfront fee they have paid and is not able to rent the property they thought they had secured with the payment. Rental fraudsters often target students looking for university accommodation. Rental fraud is a type of advance fee fraud.

### **Protect yourself from rental fraud:**

Do not send money to anyone advertising rental properties online until you are certain the advertiser is genuine.

If you need to secure accommodation in the UK from overseas, seek the help of The Students' Union Advice Centre, or get a friend, contact or relative to check the property exists and is available.

Do not pay any money until you or a reliable contact has visited the property with an agent or the landlord.

Ask for copies of tenancy agreements and any safety certificates such as Gas Electricity or HMO Licence.

Do not be pressurised into transferring large sums of money. Transfer funds to a bank account having obtained the details by contacting the landlord or agent directly after the above steps have been followed. Be sceptical if you're asked to transfer any money via a money transfer service like Western Union.

**If fraud has been committed, report it to Action Fraud.**



# Getting to know Bristol



For information about how to travel from your new home to each UWE campus, please visit the [UWE website](https://www.uwe.ac.uk).

## Our campuses

City Campus at Bower Ashton - BS3 2JT

Frenchay Campus - BS16 1QY

Glenside Campus - BS16 1DD

Gloucester Campus - GL1 2LG



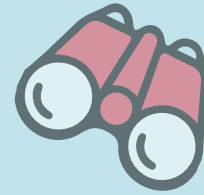




**FIND PROPERTY**



**VIEW PROPERTY**



**PAY PAY HOLDING DEPOSIT TO SECURE PROPERTY**



**READ TENANCY AGREEMENT**



**SIGN TENANCY AGREEMENT AND OTHER DOCUMENTS I.E. GUARANTOR FORM**



**PAY DEPOSIT / ADVANCED RENT**



**RECEIVED CONFIRMATION OF DEPOSIT SCHEME**



**RIGHT TO RENT CHECK**



**MOVE IN**






# ADVICE CENTRE

THE STUDENTS'  
UNION

**The Students' Union Advice Centre are here to help with all aspects of the accommodation process.**

Advice Centre | The Students' Union at UWE | Frenchay  
Campus | Coldharbour Lane | Bristol | BS16 1QY

 +44 (0) 117 32 82676

 [advice@uwe.ac.uk](mailto:advice@uwe.ac.uk)

 [thestudentsunion.co.uk/advice](http://thestudentsunion.co.uk/advice)

Opening times: Monday to Friday: 10:00–16:00.