

A photograph of a modern, multi-story student accommodation building. The building has a grey facade with numerous windows and large glass panels. A prominent yellow vertical panel is visible on the left side. A paved walkway runs alongside the building, with some greenery and a bench in the foreground. The sky is blue with some clouds.

# STUDENT VILLAGE ACCOMMODATION SITE INFORMATION

1932 students/single study bedrooms, 326 flats

[uwe.ac.uk/accommodation](http://uwe.ac.uk/accommodation)



# Your accommodation

## The Courtyards

The Student Village consists of four separate courtyards:

Brecon Court, BS16 1ZG	564 students
Cotswold Court, BS16 1ZH	500 students
Mendip Court, BS16 1ZL	400 students
Quantock Court, BS16 1ZP	468 students

Each courtyard has the following communal facilities:

- Post boxes (one per flat)
- Secure bicycle storage
- Laundry facilities (situated at Brecon, Mendip and Quantock)
- Waste and recycling areas.

All accommodation can be accessed using a lift.

Student Village flats at a glance:

- Flats are organised in single rooms for groups of five or six students.
- Residents share an open kitchen and lounge area.
- All accommodation is self-catering.
- All study bedrooms are single occupancy.
- Gas, electricity, water bills and ASK4 internet services are included as part of the rent.

## Kitchen and lounge area

Kitchen facilities for standard flats include two electric cookers, two fridge/freezers, kettle and microwave. You'll need to bring your own crockery, cutlery and cooking utensils. We recommend buying a toaster together as a flat once you have arrived.

The lounge area has a breakfast bar, stools, easy chairs, a sofa and coffee tables. There is a TV aerial socket in the lounge area where residents can plug in their own television. You are also provided with a vacuum cleaner, ironing board, floor brush, mop and mop bucket. You'll need to provide other cleaning materials yourself.

## Study bedroom

All individual study bedrooms have a single bed, wardrobe with hanging space and shelves, a mirror, a desk with chair, a chest of drawers, bedside table, desk lamp (or over desk lights) and bookshelves. The rooms are fully carpeted and curtained. There are TV aerial sockets in all bedrooms.

## En suite bathroom facilities

Each study bedroom has its own en suite wet room complete with a shower, toilet and wash basin.

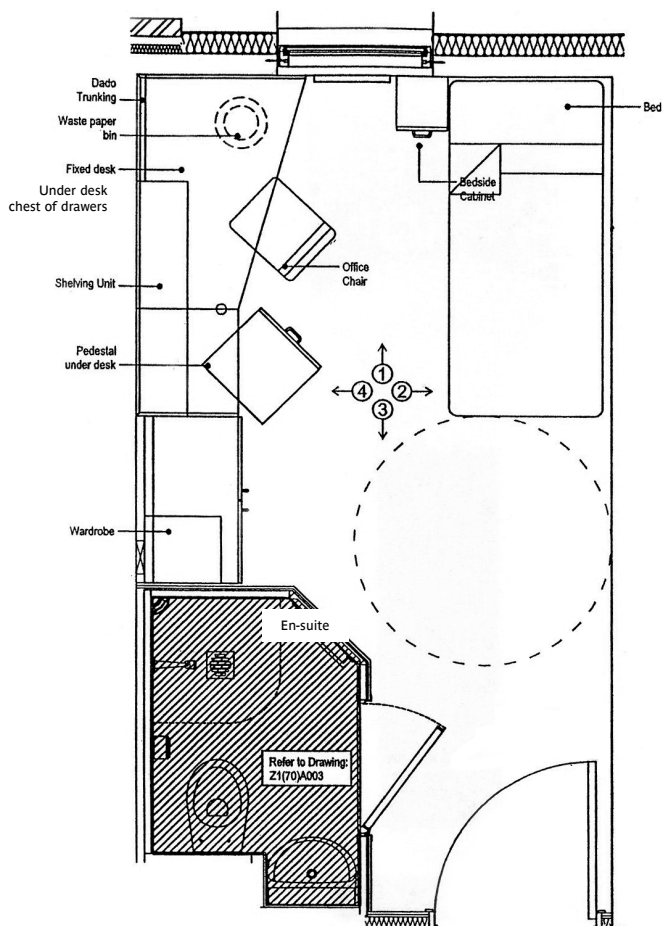


## Heating

The Student Village heating system is supplied by Prefect and consists of an Irus Controller unit which maintains a comfortable temperature in the room. This can be boosted when needed. The unit also has a sensor which detects changes in temperature, whether a room is empty or a window has been opened.

For further information about how to use your heater please see the following user guide: <https://studentlife.uwe.ac.uk/story/40603853/how-to-use-your-prefect-heater>

## Typical room layout



# Other facilities

## Laundry facilities

You have access to three laundry facilities in Brecon, Quantock and Mendip Pavilions.

Washing machines and tumble dryers are paid for via a mobile app.

## Car parking

There are no car parking facilities on campus for residents unless you are a blue badge holder. Student Village and Frenchay campus is well connected to the wider Bristol area via public transport.

We work closely with the council, police and local residents to ensure that students do not park in nearby residential areas, promoting good community relations with our neighbours. It is also a condition of your Licence to Occupy.

## Visitors parking

Visitor parking on campus is limited during the University's core hours (Monday–Friday 09:00–17:00). Your visitors should contact [travel.team@uwe.ac.uk](mailto:travel.team@uwe.ac.uk) for guidance prior to their visit. [uwe.ac.uk/parkingguidance](https://uwe.ac.uk/parkingguidance)

## Parking for motorbikes and mopeds

There is designated parking on campus for motorbikes and mopeds in car parks 3, 4 and 15, accessible at Northavon House via the North entrance on Frenchay Campus. No permit is required.

## Bicycle storage

There is lockable covered bike storage within the Student Village – please contact Customer Services for access. Bikes must not be stored inside the flats. We recommend the use of a good quality bicycle lock. Electrical vehicles (e.g. scooters and bikes) are not allowed to be stored or charged in any of UWE Bristol's accommodation.

## Post and parcels

Letters are delivered directly to Student Village residents. Each flat has a padlocked mail box in their block pavilion.

Parcels are delivered to Customer Services in 2N02. Residents will be informed via email when parcels are ready for collection.

## Shopping

Frenchay Campus has several shops and eateries, including a Morrisons, Greggs and a greengrocers. UWE Bristol is a cash free campus

Within walking distance of Frenchay Campus there's a retail park (Abbey Wood Shopping Park) and four supermarkets: Lidl, Sainsbury's, Aldi and ASDA.

There are frequent bus services to the City Centre (15 minutes via the Metrobus) and The Mall at Cribbs Causeway (30 minutes via the Metrobus), a large out-of-town shopping centre.

Read about the local area on Student Life: <https://studentlife.uwe.ac.uk/accommodation/studentvillageandwallscourtspark>

## Access and loss of key cards

Access to the Student Village is via a key card which opens the courtyard pavilion doors as well as your block door, front door and bedroom door. If you lose your card we will provide a replacement. Replacement cards can be collected at Customer Services.

When Customer Services is closed, East Reception will issue a temporary access card and you will need to go to Customer Services the following day for a permanent replacement.

# Staff

## Customer Services

Customer Services is open between 11:00-18:45 (Monday-Friday) and 11:00-17:45 (Saturday and Sunday) and is located in 2N02 on Frenchay Campus (next to OneZone). For assistance please drop in, phone **+44 (0)117 32 83601** or email [accommodation@uwe.ac.uk](mailto:accommodation@uwe.ac.uk)

## Accommodation Managers

Accommodation Managers are available from 09:00–19:00 seven days a week to help you with day-to-day management of your accommodation. You can contact them via Customer Services or email [accommodation@uwe.ac.uk](mailto:accommodation@uwe.ac.uk) for non-urgent matters.

## Campus Support Officers (CSOs)

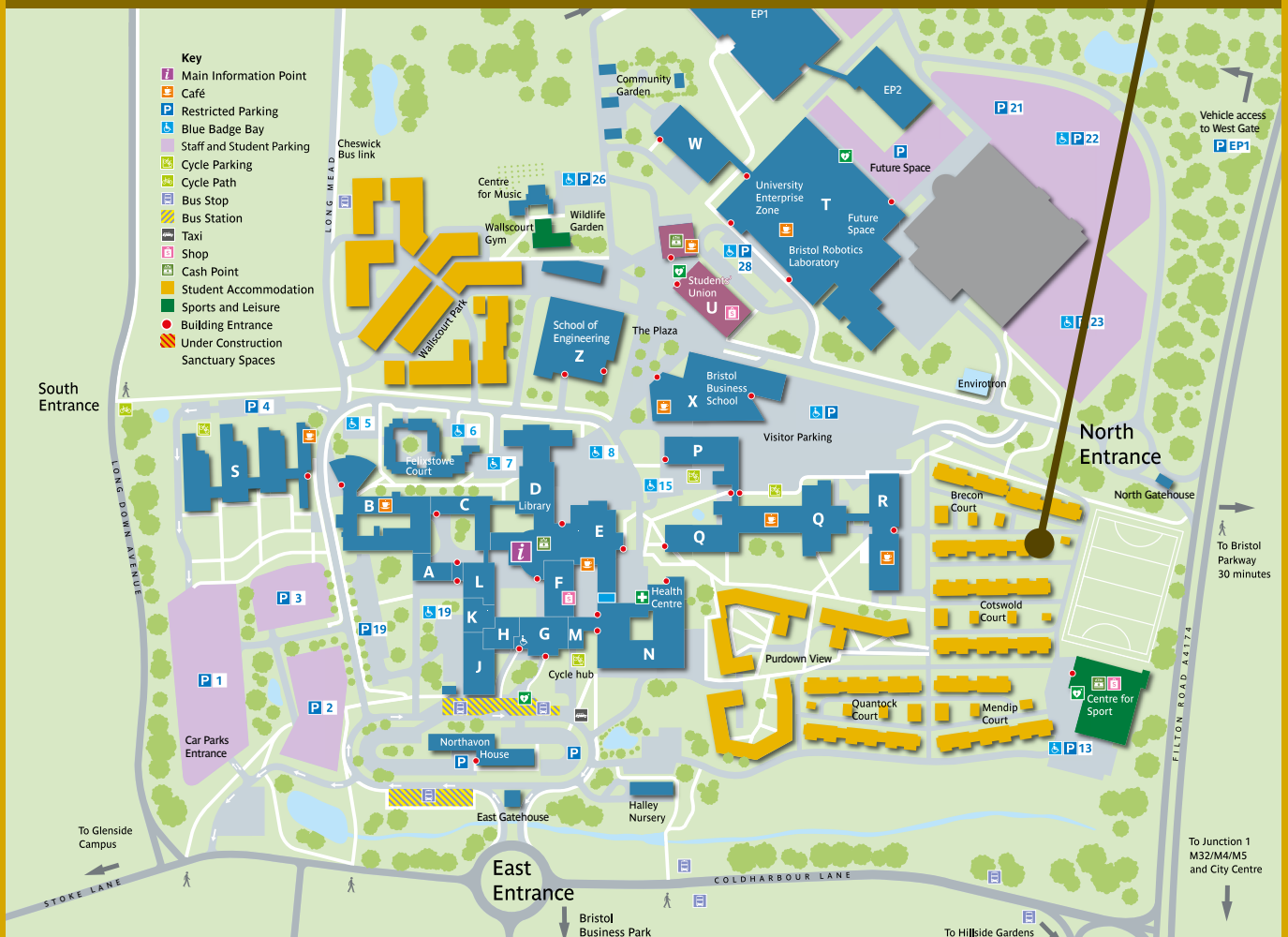
Members of staff working throughout the evening and weekend, who are available to help with fire alarm activations, noise complaints and patrol the campus to keep you safe.

## Out of Hours Team

For support between 19:00–07:00 and at weekends please call +44 (0)117 32 84000. For further information see: <https://www.uwe.ac.uk/life/health-and-wellbeing/get-wellbeing-support/get-24-7-support>



## Location – Frenchay Campus



### Accommodation Services

University of the West of England  
Frenchay Campus  
Coldharbour Lane  
Bristol BS16 1QY

[uwe.ac.uk/accommodation](http://uwe.ac.uk/accommodation)

Email: [accommodation@uwe.ac.uk](mailto:accommodation@uwe.ac.uk)

Telephone +44 (0)117 32 83601

