



PURDOWN VIEW ACCOMMODATION SITE INFORMATION

900 study bedrooms, 120 flats and 29 studios

uwe.ac.uk/accommodation

Your flat and study bedroom

Purdown View is made up of flats for between four and eight residents. There are also 29 premium studio apartments.

- Residents share an open plan kitchen and living area.
- Study bedrooms have either ensuite bathrooms or a shared bathroom between two residents.
- All accommodation is self-catered.

Study bedrooms are single occupancy. Electricity, water and ASK4 internet services are included as part of the rent.

Kitchen and lounge area

In the kitchen, residents have fridge-freezers, a induction hob and oven, a microwave and a kettle. The number of facilities will depend on the size of the flat, with the larger flats having access to more fridges, freezers, hobs and ovens.

You will need to bring your own crockery, cutlery, induction ready pans and cooking utensils. We recommend buying a toaster together as a flat once you have arrived.

The lounge area has a space to unwind and relax on the sofa in front of the television. There is also a dining table to enjoy meals at with your flatmates.

To keep things clean, you will be provided with a vacuum cleaner, ironing board, and mop and bucket. You'll need to provide other cleaning materials yourself.

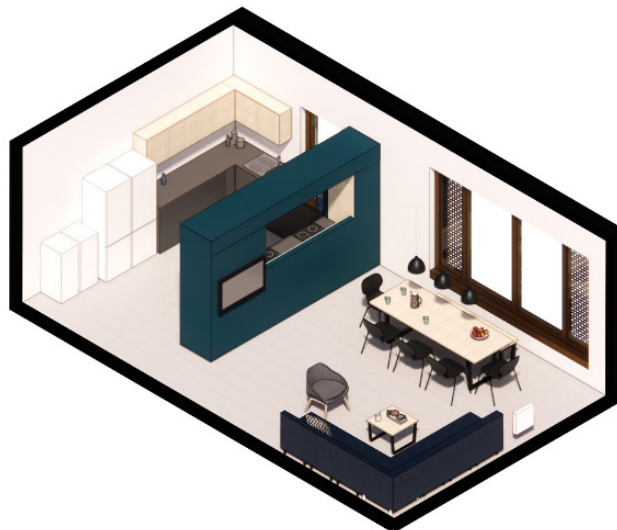
Study bedroom

Study bedrooms in Purdown View are single occupancy. There is the option to have an en suite bathroom or share a bathroom between yourself and another flatmate. All bathrooms consist of a toilet, a washbasin and a shower.

All flats have 4ft (small double) beds, apart from the premium four bed flats which have double beds. Each bedroom has a wardrobe with hanging space and shelves, a mirror, a desk with a chair, a chest of drawers, bedside table, desk lamp and bookshelves. The rooms are fully carpeted and curtained. Please note that UWE does not cover TV Licences in the study bedrooms and this will need to be acquired separately.

Studio Accommodation

Purdown View also offers 29 single occupancy premium studio flats. The bedroom area is equipped with a double bed, wardrobe and desk. There is a shower room with a toilet and washbasin, as well as a small kitchenette with breakfast bar.

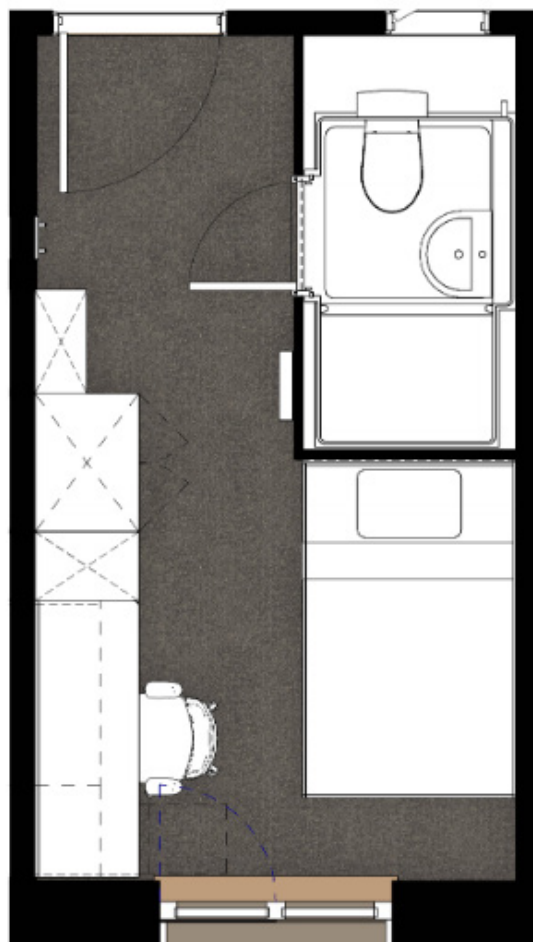


Heating

Purdown View heating system is supplied by Prefect and consists of an Irus Controller unit which enables residents to control the temperature and set it to their desired heating level. The unit also has a sensor which detects changes in temperature, whether a room is empty or a window has been opened.

For further information about how to use your heater please see the following user guide: <https://studentlife.uwe.ac.uk/story/40603853/how-to-use-your-prefect-heater>

Typical standard room layout



Other facilities

Common rooms

There are several common rooms residents have access to, including Student Life Hub, laundry lounges and a bookable communal kitchen.

There are pool tables, television areas and study spaces for you to use.

Laundry

Purdown View has onsite laundry facilities that residents have access to.

Residents pay for both washer and dryer facilities using contactless payment. Costs are displayed in each laundry area.

Car parking

There is no car parking on campus for residents unless you are a blue badge holder. Purdown View and Frenchay campus is well connected to the wider Bristol area via public transport.

We work closely with the council, police and local residents to ensure that students do not park in nearby residential areas, promoting good community relations with our neighbours. It is also a condition of your Licence to Occupy.

Visitors parking

Visitor parking on campus is limited during the University's core hours (Monday–Friday 09:00–17:00). Your visitors should contact carparking@uwe.ac.uk for guidance prior to their visit. uwe.ac.uk/parkingguidance

Parking for motorbikes and mopeds

There is designated parking on campus for motorbikes and mopeds in Car parks 3, 4, 15 and 17, accessible at Northavon house via the North entrance on Frenchay Campus. No permit is required. Electrical vehicles (e.g. scooters and bikes) are not allowed to be stored or charged in any of UWE Bristol's accommodation

Bicycle storage

There is lockable covered bike storage within Purdown View – please contact Customer Services for access. Bikes must not be stored inside the flats. We recommend the use of a good quality bicycle lock.

Post and parcels

Letters are delivered directly to Purdown View residents. Each flat has a secure mail box in block 4.

Parcels are delivered to Customer Services in 2N02. Residents will be informed via email when parcels are ready for collection.

Shopping

There are convenience stores on Frenchay Campus, Frenchay Campus has several shops and eateries, including a Morrisons, Greggs and a greengrocers. UWE Bristol is a cash free campus

Within walking distance of Frenchay Campus there's a retail park (Abbey Wood Shopping Park) and four supermarkets: Lidl, Sainsbury's, Aldi and ASDA.

There are frequent bus services to the City Centre and The Mall at Cribbs Causeway, a large out-of-town shopping centre.

Read about the local area on Student Life: <https://studentlife.uwe.ac.uk/accommodation/purdownview>

Access and loss of key cards

Access to the Purdown View is via an access card which opens your block door, front door and bedroom door. If you lose your card we will provide a replacement. Replacement cards can be collected at Customer Services.

When Customer Services is closed, East Reception will issue a temporary access card and you will need to go to Customer Services the following day for a permanent replacement.

Staff

Customer Services

Customer Services is open Monday to Friday, 10:30-18:45, and 11:00-17:45 at weekends. They are located in 2N02 on Frenchay Campus, (next to OneZone). For assistance please drop in, phone **+44 (0)117 32 83601** or email accommodation@uwe.ac.uk

Accommodation Managers

Accommodation Managers are available from 09:00–19:00 seven days a week to help you with day-to-day management of your accommodation. You can contact them via Customer Services or email accommodation@uwe.ac.uk for non-urgent matters.

Campus Support Officers (CSOs)

Members of staff working throughout the evening and weekend, who are available to help with fire alarm activations, noise complaints and patrol the campus to keep you safe.

Wellbeing

As well as on campus support, the Wisdom app provides UWE Bristol students with free access to 24/7 wellbeing counsellors and advice.

www.uwe.ac.uk/life/health-and-wellbeing/get-wellbeing-support/student-support-247



Location – Frenchay Campus



Accommodation Services

University of the West of England
 Frenchay Campus
 Coldharbour Lane
 Bristol BS16 1QY

uwe.ac.uk/accommodation

Email: accommodation@uwe.ac.uk

Telephone +44 (0)117 32 83601

