

The background of the entire page is a photograph of a modern, multi-story building with a facade of grey and yellow panels and windows. A paved walkway leads towards the building, flanked by greenery and a small tree. A red rectangular box is positioned in the top right corner, containing the UWE Bristol logo. The main title 'ACCOMMODATION GUIDE' is centered in large white letters. In the lower right, there are three text blocks: 'ACCOMMODATION GUARANTEE' with a description, '£300M' with 'invested in new facilities', and 'BRISTOL' with 'voted best place to visit in the UK by TimeOut (2024)'.

**UWE
Bristol**

ACCOMMODATION GUIDE

ACCOMMODATION GUARANTEE

We guarantee accommodation for first year undergraduate and postgraduate students joining us in September 2026

£300M

invested in new facilities

BRISTOL

voted best place to visit in the UK
by TimeOut (2024)

“

Living on campus was the best decision I made.
I got to make friends easily and was never late
to my lectures.”

Sassor

BSc(Hons) Information Technology
Management for Business





Welcome to UWE Bristol

Here you'll find a community that's inclusive, supportive and passionate. Choose from a range of great quality accommodation both on campus and in the city centre. Browse through to see what might suit you best and get a feel for living and studying here.

A place to live and to thrive

Life at UWE Bristol is full of opportunities and experiences. Finding your new home is just the start. The friends you make, the communities you join, and the way you're supported shape your student experience. Here's why life at UWE Bristol promises to be special:

- Bristol is a thriving city, known for its independent thinking, edgy creativity and commitment to sustainability. This is a friendly, open-minded city that celebrates diversity. With employers like Aardman and Airbus plus beautiful green and open spaces you'll find everything you need to thrive and succeed.
- The spaces you live and study in are designed to create an inspiring and comfortable lifestyle. More than £300M has been invested in standout learning spaces like our engineering building and nursing simulation facilities.
- You'll settle in quickly and meet like-minded people with the help of our Student Life teams. They host social events across all campuses, provide practical advice and signpost to wellbeing services. The team is run by students who understand what the transition to university feels like. They're here to support you and help you get settled.
- The Students' Union has a choice of over 160 sports clubs and societies; a great way



to meet new people and try something new. They host events and provide shops, cafés and social spaces on every campus.



Bristol is the perfect size. It has everything you need and is very compact. I like that it isn't big like London and Manchester."

Sebastian
MSc Sustainable Development in Practice



Types of accommodation

There is a room and location to suit everyone at UWE Bristol. You might prefer having your own space in a self-contained studio flat, living with a group in one of our townhouses, or experiencing the buzz of Bristol's city centre.

All our accommodation is self-catered. If you don't fancy cooking, there are lots of cafés on all campuses.

We can only provide accommodation for individuals. If you're coming to study with a partner or other dependents, the Students' Union have great resources on renting privately in Bristol.

Campus and accommodation locations

UWE Bristol accommodation is available at our City, Frenchay and Glenside campuses.

Take a tour of our accommodation options at:

explore.uwe.ac.uk



Frenchay Campus

Find out about life on campus and the different accommodation available.

Take a tour of our accommodation options at:

explore.uwe.ac.uk

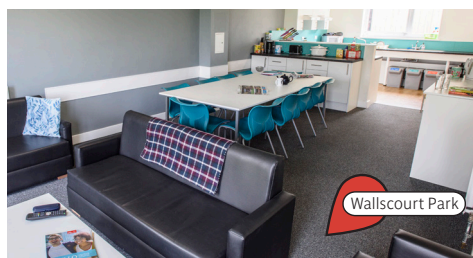




Why choose Frenchay Campus?

Many of our students live and study on Frenchay Campus. Here you'll find the Student Village, Wallscourt Park and our sustainable Purdown View flats. Many of the rooms are en-suite and all the buildings have lift access, bike storage and an outdoor space.

Living on campus means you'll be close to lectures and facilities like the Students' Union, 24/7 Library, Centre for Sport, shops and numerous cafés, bars and restaurants.





Purdown View



Purdown View



Wallscourt Park



Accessible accommodation at Frenchay



Accessible accommodation



Accessible accommodation



We offer a range of accessible accommodation options and can tailor your room and communal space to make sure it's right for you. You'll need to disclose your disability when you apply and we'll then work with you to put any changes and systems in place. Find out more at:

uwe.ac.uk/life/accommodation/applying/students-with-additional-needs

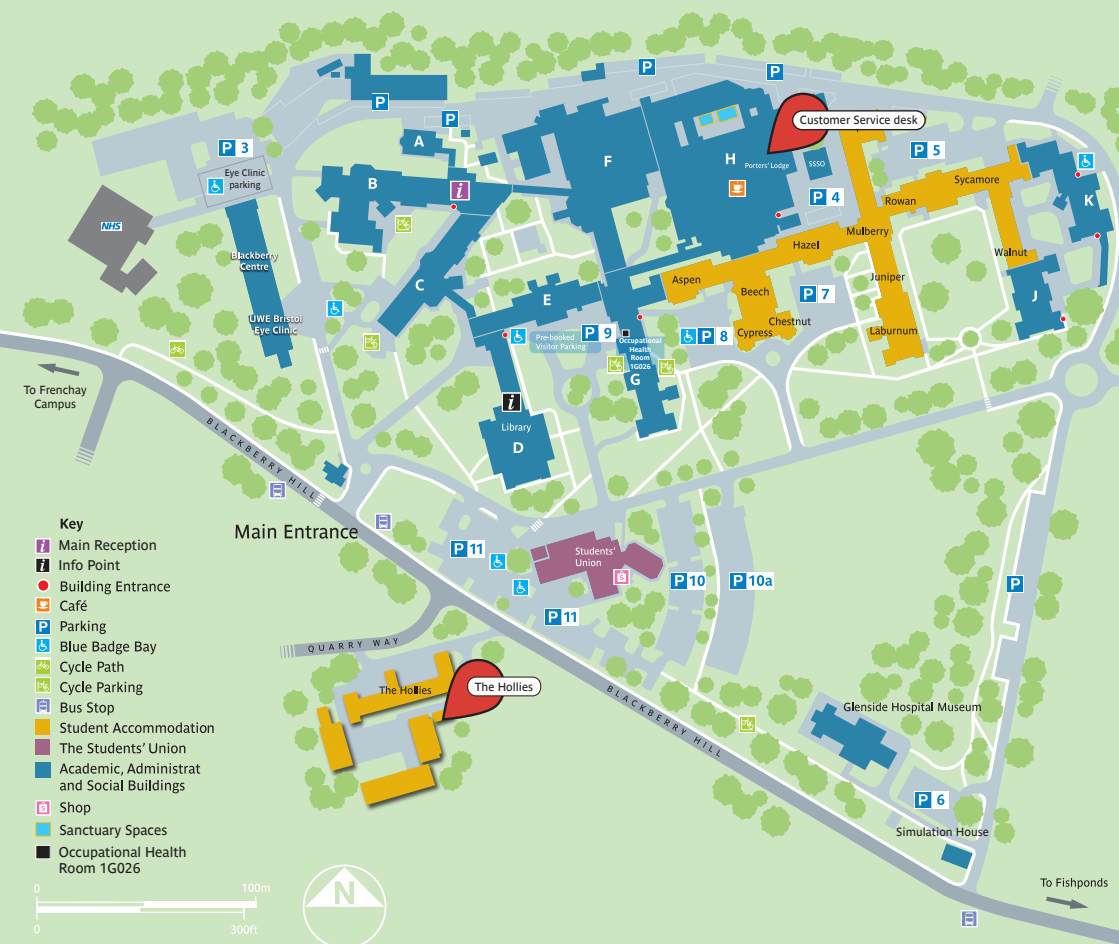


Glenside Campus

Live and study on campus as an allied health, nursing or midwifery student.

Take a tour of our accommodation options at:

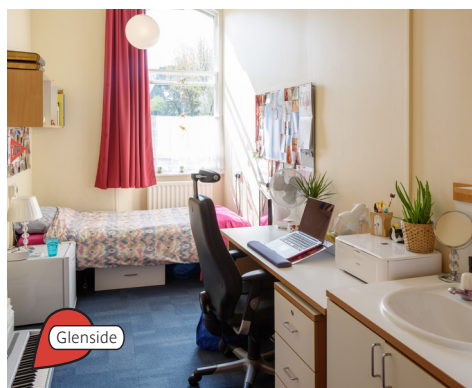
explore.uwe.ac.uk

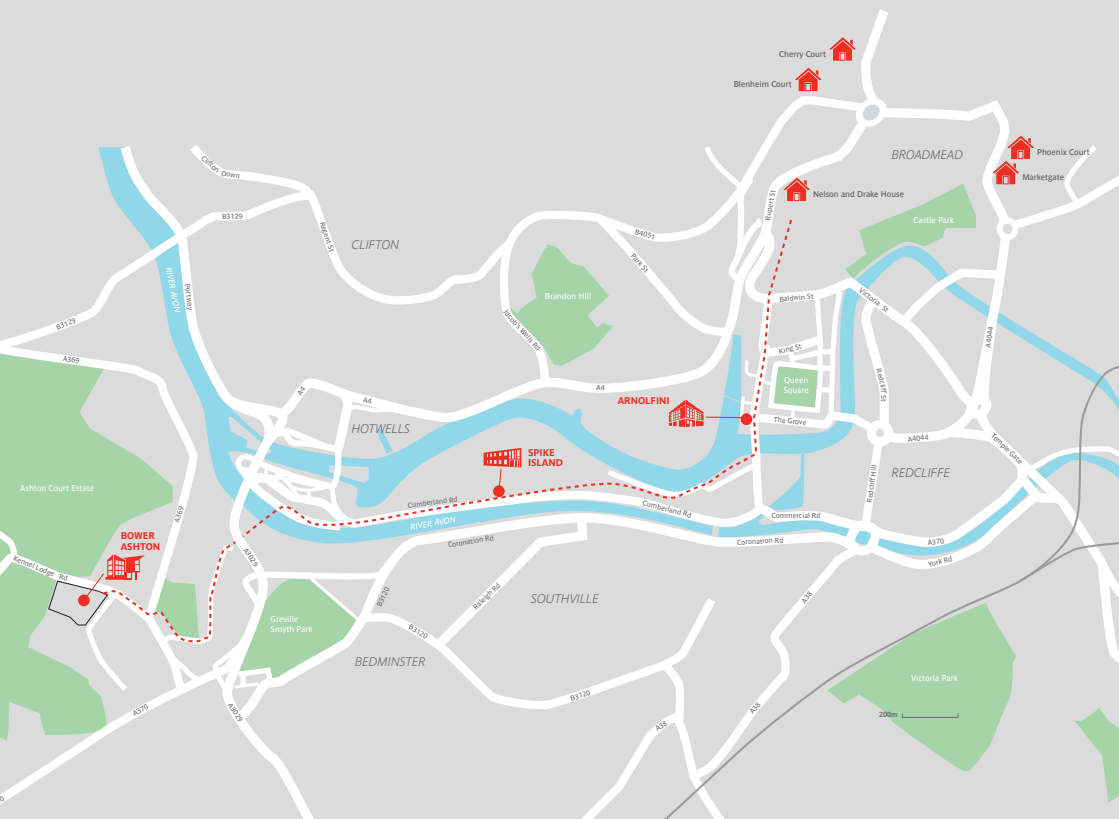


Why choose Glenside Campus?

Glenside Campus is home to our allied health, nursing and midwifery students. You can live in a shared, self-catered flat in our Glenside accommodation, or in The Hollies located directly opposite campus.

Living on campus means you'll have easy access to Glenside's dedicated Healthcare Library and other facilities like the Replica Hospital Ward, Diagnostic Radiography Suite and Eye Clinic. You'll also be within walking distance of Fishponds High Street with its independent shops, cafés and bars.





City Campus

Our City Campus has sites across the centre of Bristol. Explore our accommodation options in the city centre or other options with easy access to it.

Take a tour of our accommodation options at:

explore.uwe.ac.uk



 Phoenix Court

Why choose Bristol city centre?

Take advantage of city living with our accommodation options in Bristol city centre.

Around the city you'll find Blenheim Court, Cherry Court, Phoenix Court, Marketgate, Nelson and Drake House. In city centre accommodation you'll be within easy reach of shopping, nightlife and transport links and live close to our City Campus sites; Arncliffe, Spike Island, Watershed and Bower Ashton Campus.




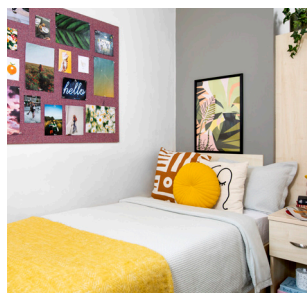
 Blenheim Court



 Phoenix Court



 Nelson and Drake House



 Cherry House



Accommodation overview

All utility bills are included in your rent across all our buildings.

	Accommodation type (as appeared on the application)	Number of rooms	Beds per flat/ house	Bed size	Contract length	Other facilities
FRENCHAY CAMPUS						
Student Village	Frenchay Ensuite	1,932	6	Single	42-weeks	<ul style="list-style-type: none"> - Lift access - Bike storage - TV aerial point - Highspeed Wi-Fi - Optional gym - Customer Service desk - Laundry facilities membership - Customer Service desk - Laundry facilities
Wallscourt Park	<ul style="list-style-type: none"> - Frenchay shared bathroom - Frenchay ensuite - Studio 	965	6-12	Small double	42-weeks	<ul style="list-style-type: none"> - Lift access (flats only) - Bike storage - TV in flats and townhouses - Highspeed Wi-Fi - Optional gym membership - Customer Service desk - Laundry facilities - Common room
Purdown View	<ul style="list-style-type: none"> - Frenchay shared bathroom - Frenchay ensuite - Studio 	900	4-8	Small double/4ft in standard - Double in premium	42-weeks	<ul style="list-style-type: none"> - Lift access - Bike storage - TV in living room - Highspeed Wi-Fi - Optional gym membership - Customer Service desk - Laundry facilities - Common rooms
GLENSIDE CAMPUS						
Glenside	Glenside	288	3-7	Single	45-weeks	<ul style="list-style-type: none"> - Bike storage - Highspeed Wi-Fi - Customer Service desk - Laundry facilities - Parking (limited) - Gym membership (on Frenchay Campus)
The Hollies	Glenside	179	3-7	Single	45-weeks	<ul style="list-style-type: none"> - Bike storage - Highspeed Wi-Fi - Customer Service desk - Laundry facilities - Parking (limited) - Gym membership (on Frenchay Campus)

	Accommodation type (as appeared on the application)	Number of rooms	Beds per flat/ house	Bed size	Contract length	Other facilities
CITY CENTRE						
Blenheim Court (managed by Unite Students)	City Centre ensuite (limited)	231	4-5	- Single in classic - Small double in premium rooms	42-weeks	- Lift access - TV aerial point - Bike storage - Highspeed Wi-Fi - On-site staff - Common room - Laundry facilities - Unite Students app
Cherry Court (managed by Unite Students)	City Centre ensuite (limited)	176	3-6	Single	42-weeks	- TV aerial point - Bike storage - Highspeed Wi-Fi - On-site staff - Laundry facilities - Unite Students app
Marketgate (managed by Unite Students)	City Centre ensuite (limited) Studio	490	4-6	- Single in classic - Small double in premium rooms - Various in studios	42-weeks	- Lift access - TV aerial point - Bike storage - Highspeed Wi-Fi - On-site staff - Common room - Laundry facilities - Unite Students app
Nelson and Drake House (managed by Unite Students)	City Centre shared bathroom City Centre ensuite (limited)	302	3-6	Small double/4ft	42-weeks	- Lift access - TV aerial point - Bike storage - Highspeed Wi-Fi - On-site staff - Common room - Laundry facilities - Unite Students app
Phoenix Court (managed by Unite Students)	City Centre ensuite (limited)	188	3-5	Small double/4ft	42-weeks	- Lift access - TV aerial point - Bike storage - Highspeed Wi-Fi - On-site staff - Common room - Laundry facilities - Unite Students app

Travel time to our campuses

	Frenchay Campus			Glenside Campus			City Campus (Bower Ashton)*		
	Walk	Bus	Cycle	Walk	Bus	Cycle	Walk	Bus	Cycle
Student Village	5 min	N/A	N/A	40 min	20 min	15 min	2 hour 25 min	45 min	40 min
Wallscourt Park	5 min	N/A	N/A	40 min	20 min	15 min	2 hour 15 min	45 min	35 min
Purdown View	5 min	N/A	N/A	40 min	20 min	15 min	2 hour 25 min	45 min	40 min
Glenside	40 min	20 min	15 min	5 min	N/A	N/A	2 hour 10 min	1 hour 5 min	30 min
The Hollies	40 min	20 min	15 min	10 min	N/A	N/A	2 hour 10 min	1 hour 5 min	30 min
Blenheim Court	1 hour 30 min	25 min	30 min	1 hour 10 min	45 min	20 min	55 min	20 min	15 min
Cherry Court	1 hour 30 min	25 min	25 min	1 hour 10 min	40 min	20 min	1 hour	20 min	20 min
Marketgate	1 hour 30 min	25 min	25 min	1 hour 10 min	40 min	20 min	1 hour 5 min	35 min	15 min
Nelson and Drake House	1 hour 35 min	25 min	30 min	1 hour 20 min	45 min	25 min	50 min	20 min	15 min
Phoenix Court	1 hour 30 min	25 min	25 min	1 hour 10 min	40 min	20 min	1 hour 5 min	35 min	15 min

*Our City Campus also includes Arnolfini, Spike Island and Watershed. Travelling times to these buildings will vary.



Applying for accommodation

What you need to do and when



January 2026:

Explore your accommodation options

Take a look at our accommodation options across Frenchay Campus, Glenside Campus and Bristol city centre. Filter by location, amenities and cost to find your perfect room.

From February 2026:

Set up an account on the accommodation portal

If you've accepted an offer from us (Conditional Firm (CF) or Unconditional Firm (UF) we'll email you with an invite to create an account in the Accommodation Portal. Once your account is created, you'll be all set to submit preferences before the deadline. This is also a good time to start thinking about how you will rank your accommodation preferences. When it comes to applying, you must rank all six of our accommodation types from most to least wanted.

April–June 2026:

Submit your accommodation preferences

You need to make sure you have accepted your offer to study with us. This will allow you to submit your preferences in the accommodation portal. You can do this from April. We'll email you nearer the time with the exact date and time applications open.

If you submit an application by Wednesday 1 July and meet the other terms of the accommodation guarantee, you will secure a room in UWE Bristol accommodation.

January starters:

If you are starting your course in January 2027, you should aim to submit your accommodation preferences as soon as possible.

June–August 2026:

Within four weeks of submitting your application for accommodation, we will email you with an accommodation offer.

You'll then have five days to accept the offer and secure your room with an advance rent payment of £400. If you are moving to a city centre building, your advance rent payment is paid to your building provider. For Unite the payment is £400.

If you accept an offer of accommodation and then change your mind, please let us know by the end of August. We'll then have enough time to reallocate your room and can refund your advanced rent payment.



January starters:

If you are starting your course in January 2027, you'll receive your offer in late autumn/early winter. Don't worry if you haven't heard from us within four weeks of submitting your application.

August 2026:

Applying through Clearing

If you are applying to the University through clearing, you can still apply for university-managed accommodation as rooms may become available, but you'll also want to look at private accommodation.

August 2026:

Didn't get the results you wanted?

Not everyone gets the results they want. If yours aren't what you expected, the best thing to do is contact admissions. One of our advisers can talk you through your options.

August 2026:

Preparing and arrival

Everything you need to know ahead of September to help you feel ready for the start of term.

Find out about student registration, how to get to campus and upcoming events like welcome week and starting block.

Mid–September 2026 onwards:

Moving in day

We can't wait to welcome you to UWE Bristol.

Move in day can change depending on the accommodation you have chosen, and your contract start date. You can check your contract start date by logging in to the accommodation portal.

Accommodation guarantee



We offer guaranteed accommodation if you are a full-time, first year or foundation student applying for accommodation for the first time, and you submit your application by the deadline. Read more about our accommodation guarantee and the Terms and Conditions on our website uwe.ac.uk/life/accommodation/accommodation-guarantee

Frequently Asked Questions

What if I come to UWE Bristol via Clearing?

You can still apply for accommodation if you come via Clearing. You need to apply on the Accommodation Portal and we'll be in touch if any rooms become available. We do highly recommend that you look in the private sector as well.

Do you have adapted rooms and flats available?

We can implement a number of support options based on your needs. Frenchay Campus has adapted rooms with extra space, practical bathrooms and the option to have your personal assistant living with you (additional charges apply). There is also the option to live in single-sex flats.





KEEP IN TOUCH

 @UWEBristol

 @UWEBristol

 @UWEBristol

 UWE Bristol

 @UWEBristol

Accommodation Services

University of the West of England (UWE Bristol)

Frenchay Campus

Coldharbour Lane

Bristol BS16 1QY

UK

+44 (0)117 32 83601

uwe.ac.uk/accommodation