

**BUILD A CAREER
THAT MATTERS
TO YOU AND
THE PLANET**



The planet is changing, why aren't we?

In today's world, sustainability is no longer optional - it's urgent. From climate disruption to resource scarcity, the challenges are complex, and the need for action is immediate. The question is not if we need change, but who will lead it.

The MSc Sustainability and Environmental Management equips you with the tools to make that difference count. Whether you're driving policy, shaping strategy, or leading change from within, this is your chance to turn purpose into leadership and build a future that works — for people and the planet.

Content

- Career outcomes
- Why UWE Bristol
- Who is this programme for?
- Programme structure
- Meet your programme leader
- Skills development
- Online classroom and collaborative learning
- Assessment
- Entry requirements and tuition fees
- Application success

A growing demand

The demand for sustainability professionals is growing rapidly. Organisations across sectors need experts who can lead environmental strategy, manage risk, and drive meaningful change. Graduates of this programme are well-prepared for high-impact roles in government, industry and the non-profit sector, offering strong career progression, global relevance and the opportunity to help shape a more sustainable future. At UWE Bristol, 90% of graduates are in employment or further study after 15 months, according to the Graduate Outcome Survey 21/22 (published 2024). These are the types of roles you can expect to go into:

Sustainability and Environmental Consultant

Work within organisations to assess Environmental, Social and Governance performance, helping align business practices with sustainability standards and investor expectations.

Sustainability Officer or CSR Lead

Deliver sustainability programmes in areas like waste, water, and energy while embedding ethical practices into business strategy and stakeholder engagement.

ESG Analyst or Manager

Support ESG performance tracking, helping organisations meet sustainability goals, investor expectations, and reporting standards.

Climate Change Policy Advisor

Shape and support climate strategies at national, regional, or local levels by analysing policy, adaptation and mitigation planning, and aligning actions with global frameworks.

Environmental Impact Assessor

Evaluate development or infrastructure projects to ensure environmental risks are identified, mitigated, and aligned with relevant regulations.

Clean Energy Project Coordinator

Support the design and delivery of renewable energy projects by bridging technical, policy, and stakeholder needs.

Environmental Manager

Lead environmental compliance and sustainability policy in businesses or the public sector, overseeing audits, impact assessments, and operational improvements.

Air or Water Quality Specialist

Monitor environmental health by analysing air or water quality data, guiding pollution control strategies, and supporting regulatory compliance and public wellbeing.

Sustainable Development Project Lead

Coordinate community-based or cross-sector initiatives that align with UN SDGs and support long-term environmental and social outcomes.

Questions about your potential career prospects?

[Book a meeting with our Enrolment Success Team](#)

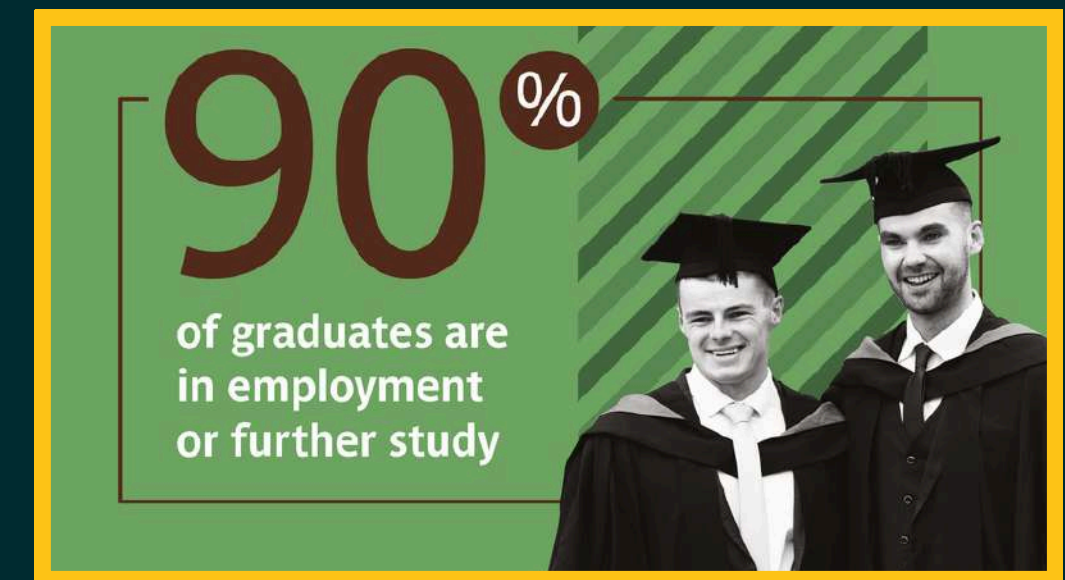
Why UWE Bristol?

**UWE
Bristol**

Teaching Excellence

UWE Bristol is a thriving, modern university with a rich history of academic excellence and a strong reputation for producing highly employable graduates. We are proud to hold a **gold rating for student experience** in the Teaching Excellence Framework (TEF).

This programme is delivered by the **School of Architecture and Environment at UWE Bristol**, a **forward-thinking, inclusive academic community focused on shaping sustainable futures**. Drawing on the school's strengths in environmental research, urban resilience and responsible innovation, the MSc Sustainability and Environmental Management equips students with the tools to **lead change across sectors**, while benefiting from UWE Bristol's strong industry connections, cutting-edge digital resources and commitment to real-world impact.



Who is this programme for?

This programme is designed for professionals committed to creating a more sustainable world. Whether you're working in policy, business, environmental consultancy, or the public sector, it equips you with the strategic, systems-focused, and practical skills to lead environmental change across organisations and communities.

Professionals ready to lead on sustainability:

Whether you're already working in an environmental role or transitioning from another field, this MSc prepares you to step into leadership positions. You'll develop the knowledge and confidence to **drive sustainable transformation, shape policy, and influence environmental outcomes** in complex, fast-moving contexts.

Those looking to grow in a shifting global landscape:

Climate change, biodiversity loss, and environmental risk are reshaping industries and regulation. This programme helps you understand these challenges through a global lens and gives you the tools to **lead adaptive, evidence-based responses** that align with international frameworks and sustainability goals.

Professionals who want to lead with purpose:

This MSc supports those who want their careers to have real impact. You'll graduate with the ability to **lead sustainability strategy**, collaborate across disciplines, and help organisations meet urgent environmental demands. It's a qualification for people who want to build a better future, not just talk about one.



**MSc Sustainability and
Environmental Management (online)**
Prospectus 2025/26

Unlock your potential with online study

Balance your studies with your work and personal commitments, without sacrificing the quality of your education.

**UWE
Bristol**

Flexibility

Our **100% online format** gives you the freedom to study at your own pace. You can design a study schedule that suits you. Tuition is also paid on a per-module basis, allowing payments to be spread out across your programme.

Mobility

Your programme is in your pocket. It travels with you as you **study asynchronously** from the device of your choice from anywhere in the world. **Enjoy 24/7 access to class** through your Virtual Learning Environment and online library.

Expert Faculty

Our programmes are **designed by experienced professionals** and academics who are passionate about teaching and research. Benefit from their insights, guidance, and support.

Support

Develop your knowledge with 24/7 access to the UWE Bristol online library service. You can also rely on your programme leaders, module leaders and tutors, as well as a **dedicated student support team**. When needed, you can also get 24/7 support from the **mental health helpline**.

Community

Connect with a **diverse network of learners** and experts from around the world through engaging discussion forums. Learn from their experience and expand your point of view.

Programme structure

Your path to environmental management mastery

**UWE
Bristol**

The UWE Bristol MSc Sustainability and Environmental Management is a **two-year, part-time programme** designed to **fit around your professional commitments**. Through a blend of theoretical exploration, critical reading, and real-world case studies, you'll build the expertise to address complex environmental challenges and lead sustainable transformation across sectors.

Core Modules: Building your skills toolkit

Each of the **eight compulsory modules** is 15 credits and is carefully crafted to build upon your existing knowledge and skills, ensuring a logical progression throughout the programme.

Apply your knowledge in the real world:

In your final year, you'll complete a 60-credit independent research project, using your learning to explore a real-world sustainability or environmental management challenge.

Are you a suitable candidate?

Take our questionnaire to find out if you are eligible to study on one of our online postgraduate degree courses.

[Eligibility test](#) >

CORE MODULES

The programme comprises 180 credits in total. You'll study eight core modules, each worth 15 credits completed over eight weeks. Your learning journey concludes with a 60-credit independent Masters Project, where you'll investigate a sustainability or environmental management issue aligned with your professional interests.



Sustainable Development: Principles and Practice

15 Credits

Examine global sustainability issues and explore the roots and consequences of unsustainable development. Learn key theories, frameworks and tools such as the UN SDGs, and understand their practical application. Develop skills to critically analyse sustainability challenges and communicate effective solutions in diverse contexts.



The Sustainable Organisation: Vision into Practice

15 Credits

Analyse how organisations can embed sustainability into their vision and strategy. Using real-world case studies, explore decision-making, accountability, ethics and transformation tools. Learn to propose practical interventions that respond to complex sustainability challenges and communicate them to organisational stakeholders with clarity and impact.



Climate Change and Climate Action: A Multidisciplinary Perspective

15 Credits

Gain a multidisciplinary understanding of climate change and climate action. Examine scientific, political and socio-economic aspects, explore systems thinking and learn to communicate climate issues. The module develops holistic, contextual knowledge, preparing students to design or contribute to real-world sustainability and climate strategies in diverse settings.



Environmental Assessment

15 Credits

Understand and apply the Environmental Assessment process from scoping to reporting. Critically evaluate data, propose mitigation strategies, and communicate findings effectively. This module offers essential tools for planning and development professionals working to ensure sustainability and compliance in infrastructure and land use projects.

CORE MODULES

Explore your online modules, designed to build the practical knowledge, strategic thinking, and systems expertise needed to lead environmental initiatives, influence policy, and drive sustainable change across organisations and communities.

**UWE
Bristol**



Creating Systems and Behaviour Change for Sustainable Development

15 Credits

Learn how systems thinking and behavioural sciences can drive sustainable development. Examine psychological, social and policy-based approaches to changing human behaviour and organisational systems. This module supports critical analysis and practical planning of interventions that create sustainable, meaningful change in society, policy and professional practice.



Air Quality Management

15 Credits

Explore the science, policy and management of air pollution. Learn to assess air quality using monitoring and modelling tools, understand health impacts, and evaluate mitigation strategies. This module prepares students for roles in consultancy, government or planning, with practical skills in air quality assessment and communication of solutions.



Renewable Energy and Carbon Futures

15 Credits

Explore the technologies, policies and politics behind renewable energy transitions. Investigate low-carbon systems, regulatory frameworks and community solutions, with a focus on global and UK case studies. Learn to critically assess sustainability challenges and propose practical strategies for a cleaner energy future.



Sustainable Water Management: Issues and Challenges

15 Credits

Explore water as a critical global resource. Understand natural and urban water systems, governance, and sustainability challenges including SDG 6. Investigate integrated water management and hydropolitics. This module prepares students to manage water sustainably across rural, urban and transboundary contexts.



Masters Project

60 Credits

Undertake an independent research project on a topic aligned with your professional interests and aspirations in sustainable development.

You'll apply the knowledge and skills developed throughout the course to investigate a real-world issue, influence policy, or design practical solutions for environmental or social challenges.

Meet your programme leaders

**UWE
Bristol**

Professor Georgina Gough



Qualifications: BSc (Hons), MA, PhD, PGCert (PLHE), FHEA, FRGS

Position: Professor and Programme Leader, MSc Sustainability and Environmental Management

Dr Georgina Gough is an award-winning academic and sustainability leader with over 20 years of experience in higher education. As Programme Leader for the MSc Sustainability and Environmental Management, she brings a deep commitment to empowering students to lead positive environmental and social change. A Fellow of both the Higher Education Academy and the Royal Geographical Society, Georgina has received multiple accolades for her teaching and leadership, including the Advance HE Collaborative Award for Teaching Excellence (CATE). Her work bridges research, education, and practice, inspiring learners to become agents of sustainability in diverse global contexts.


Professor Jo Barnes



Qualifications: BSc (Hons), MSc, PhD

Position: Professor of Clean Air / Programme Leader

Professor Jo Barnes brings over two decades of research and policy experience in air quality and environmental management at local, national, and international levels. As Director of UWE Bristol's Air Quality Management Resource Centre, she leads interdisciplinary teaching and research that informs public policy and enhances urban sustainability. A recognised expert and advisor to Defra, the Environment Agency, and the European Commission, Jo is committed to improving environmental justice and public health through evidence-based strategies. Her passion for impactful teaching and real-world problem-solving makes her a driving force behind our professionally accredited postgraduate environmental programmes.

The background of the slide is a photograph of a modern glass skyscraper. The glass reflects the surrounding greenery and sky. To the right, a large tree with dense green leaves is visible, with sunlight filtering through its branches. A large, solid yellow diagonal shape cuts across the bottom left of the image, serving as a backdrop for the text.

Sustainability is now a core business and policy priority. This programme equips you to lead with purpose, whether managing climate risk, supporting biodiversity, or navigating frameworks like ESG.

Skills development with real-world impact

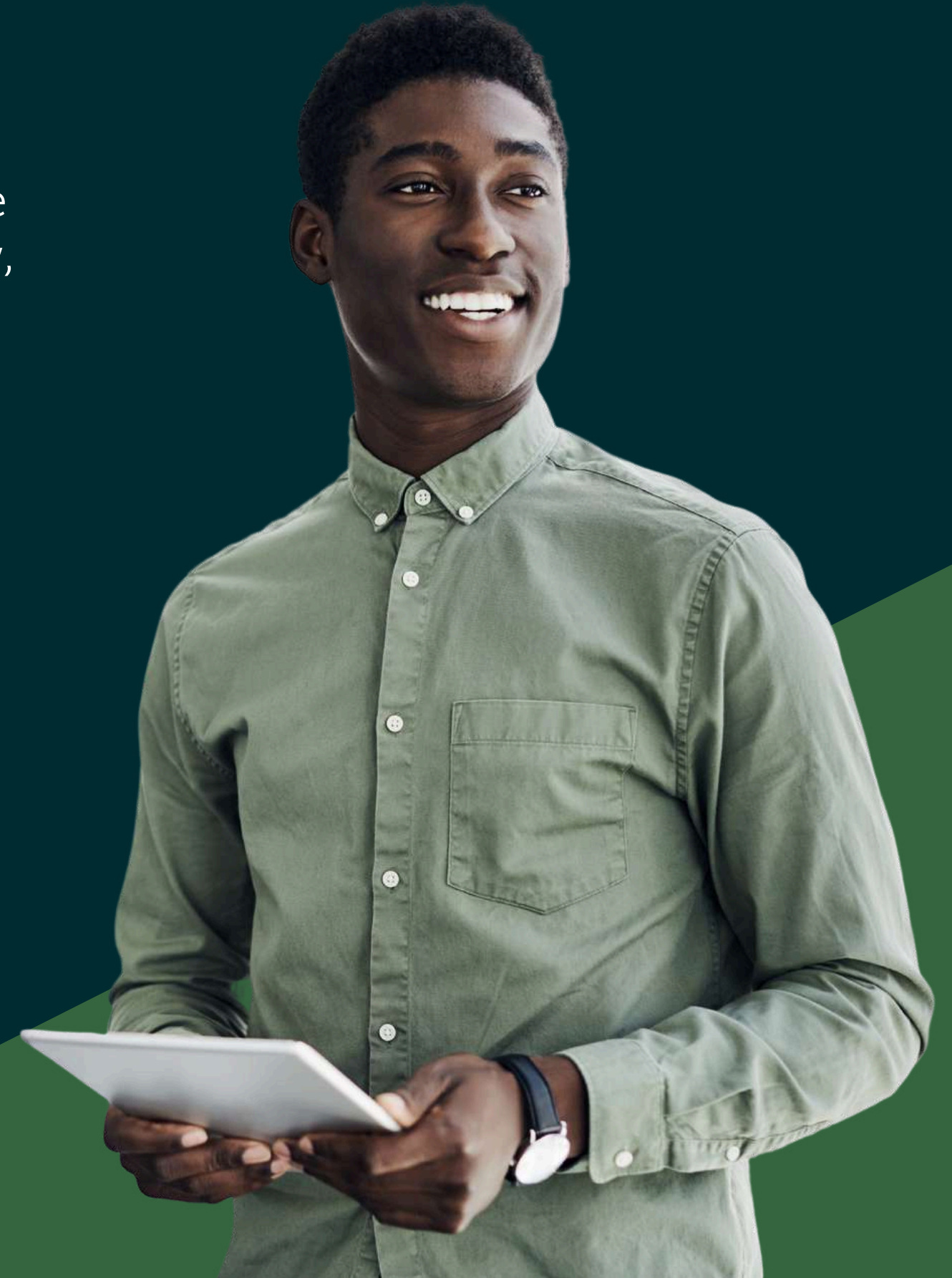
Real-world application

The skills you gain in the MSc Sustainability and Environmental Management can be put to work immediately in your professional context, whether you're shaping policy, managing sustainability initiatives, supporting ESG reporting, or driving environmental performance. You'll graduate ready to tackle complex sustainability challenges with clarity, credibility and impact.

Personal and professional growth

This programme goes beyond academic knowledge to support your development as a reflective, confident sustainability leader. As you deepen your understanding of environmental systems and sustainable strategies, you'll also build essential skills in critical thinking, communication, systems leadership, and evidence-based decision-making.

By the time you complete the degree, you'll be equipped with a well-rounded skillset to lead with purpose, influence change, and make a measurable impact in your organisation and beyond.



Key skills you'll develop

Systems Thinking

Learn to analyse complex environmental challenges through interconnected social, ecological and economic systems, using tools like systems diagramming and soft systems methodology.

Environmental Assessment and Impact Analysis

Gain practical expertise in planning, conducting and communicating environmental assessments, including scoping, data analysis, and mitigation planning.

ESG: Policy and Governance

Develop a strong understanding of environmental policy, climate governance, and sustainability regulation, enabling you to influence decision-making.

Behaviour and Organisational Change

Explore theories of behaviour change and organisational transformation to design effective sustainability interventions and lead cultural shifts within institutions.

Research and Critical Evaluation

Build advanced research capabilities through independent project work, including literature review, methodology design, data analysis, and critical reflection.

The Virtual Learning Environment (VLE)

Your digital campus, your global classroom

At UWE Bristol, we've created a dynamic and engaging virtual learning environment (VLE) that brings the classroom to you, wherever you are in the world. Our VLE, powered by Blackboard Ultra, is designed to facilitate seamless online learning, collaboration, and connection.

Blackboard Ultra: Your learning hub

Blackboard Ultra is more than just a platform; it's your personalised learning hub. Access programme materials, engage in discussions, submit assignments, and connect with your peers and instructors, all in one convenient location. With features like:

Interactive content: Engage with multimedia learning materials, including videos and quizzes.

Discussion forums: Share ideas, ask questions, and collaborate with your peers in a vibrant online community.

Online sessions: Participate in real-time discussions and Q&A sessions with your instructors and classmates.

24/7 access: Study at your own pace, anytime and anywhere, from any device.



Collaborative learning

Building a global community of sustainability leaders

We believe learning is most impactful when shared across perspectives and contexts. The MSc Sustainability and Environmental Management fosters a collaborative online environment where students and faculty engage in peer discussions, group work and knowledge exchange. You'll connect with professionals from a wide range of sectors and regions, gaining insights into how sustainability is approached across different industries, cultures and policy environments. This dynamic learning community will strengthen your understanding, challenge your thinking, and expand your professional network.

Case study approach: bridging theory and practice

This programme is rooted in real-world application. Through case studies drawn from current environmental and sustainability challenges, you'll apply frameworks, analyse complex systems, and develop evidence-based solutions. From energy transitions to climate adaptation, you'll work with scenarios that reflect the urgent demands facing organisations and societies today.

Throughout your studies, you'll benefit from expert academic support and flexible, structured learning designed to help you thrive as a sustainability professional ready to lead lasting change.





Sustainability reporting is growing worldwide. As expectations rise, professionals are needed to connect strategy, data, and impact.

Assessment methods

The MSc Sustainability and Environmental Management (online) programme utilises a variety of assessment techniques to evaluate your comprehension and practical application of course material. These include:

Self and peer reflections

Enhance your self-awareness and leadership insight through reflective exercises, peer engagement, and collaborative activities that support your development as a sustainability professional.

Written work

Communicate complex sustainability and environmental management concepts through essays, policy evaluations, and strategy-based written assessments designed to build clarity, critical thinking, and influence.

Reports and analyses

Apply data, case studies, and evidence-based research to evaluate environmental challenges, assess sustainability performance, and propose realistic, actionable solutions.

Masters Project

Complete a significant independent research project where you'll apply your learning to a real-world sustainability issue, demonstrating your ability to think critically, act strategically, and deliver impact in your chosen field.



Tuition fees

The fee for this programme is £7,950. You pay £795 per module and £1,590 for the final project.

Fees are paid on a modular basis over the duration of the two-year course. The balance for the current module needs to be paid before being able to register for the next module. For your convenience, invoices will be issued as near as possible to the start of each module. UK students pay by credit or debit and international students through our official online payment partner, Flywire.

Scholarships and financial aid

We are committed to supporting individuals in pursuing their studies. Please consult with the Enrolment Success Team for the latest information on tuition fees: onlineenquiries@uwe.ac.uk

UK (home) students may be eligible for UK postgraduate student loan assistance. Students who receive this funding need to complete the course within two years, otherwise payments will be interrupted or stopped.

Browse our website about postgraduate funding.
More information available here: gov.uk/masters-loan.



Entry requirements

To be considered for the **MSc Sustainability and Environmental Management (online) programme**, you will need an honours degree (minimum 2:2) or equivalent.

If you do not meet the above requirements but have a minimum of 12-months relevant professional experience and/or equivalent qualifications, we recommend that you apply. All applications are reviewed on a case-by-case basis.

English language requirement

If English is not your first language, you'll be required to meet the University's minimum English language requirements, such as the International English Language Test (IELTS) with an overall score of 6.5 with 5.5 in each component.

*The university accepts a large number of UK and International qualifications in place of IELTS. To find details of acceptable tests and the required grades, please visit our [English Language Requirements](#) pages.

Exemption from the English language requirement

A Proof of English Language Proficiency (POE) exemption may be offered to you if you meet one of the following criteria:

- Completed at least three years of high school in an English-speaking country
- Completed an International Baccalaureate (IB) Diploma in English
- Completed an IB diploma in a different language if they obtained a grade of 5 or higher for one of the English courses
- Completed a higher educational or professional qualification in English
- Working in an English-speaking environment and demonstrably working in English
- Passing a [Duolingo test](#)

Tips for a strong application

By following these tips and submitting a well-prepared application, you'll increase your chances of being accepted into the MSc Sustainability and Environmental Management (online) programme.

Personal statement:

In a 300–500 word statement or a 4–5 minute video, you should explain:

- Why you're interested in a career in sustainability and environmental management and what aspects are of particular interest to you
- What personal attributes and experience you have which make you suited to a career in environmental management
- An overview of your intended career path

Wherever possible, your statement should draw on relevant personal experience. When describing the personal attributes and qualities which you believe equip you for a career in sustainability, try to give actual, brief examples from your experience where you displayed those attributes and qualities.

CV/resume:

If you are applying based on experience, ensure that you complete the employment section of the application form, clearly highlighting examples of responsibilities you've held and that have relevance to this programme.

Ensure your CV/resume or LinkedIn profile is up-to-date and showcases your skills and experience.





"We're all about equipping people for great careers. These courses are not just about the knowledge that students will leave us with but also about the skills, capabilities and the mindset that they need to lead in those industries for the future."

Jo Midgley, Deputy Vice-Chancellor and Registrar, UWE Bristol

Our MSc Sustainability and Environmental Management offers a flexible path to career advancement, you'll gain in-demand knowledge and skills from the comfort of home.

[Apply today.](#)

