



Transforming futures: Our Path to 2030

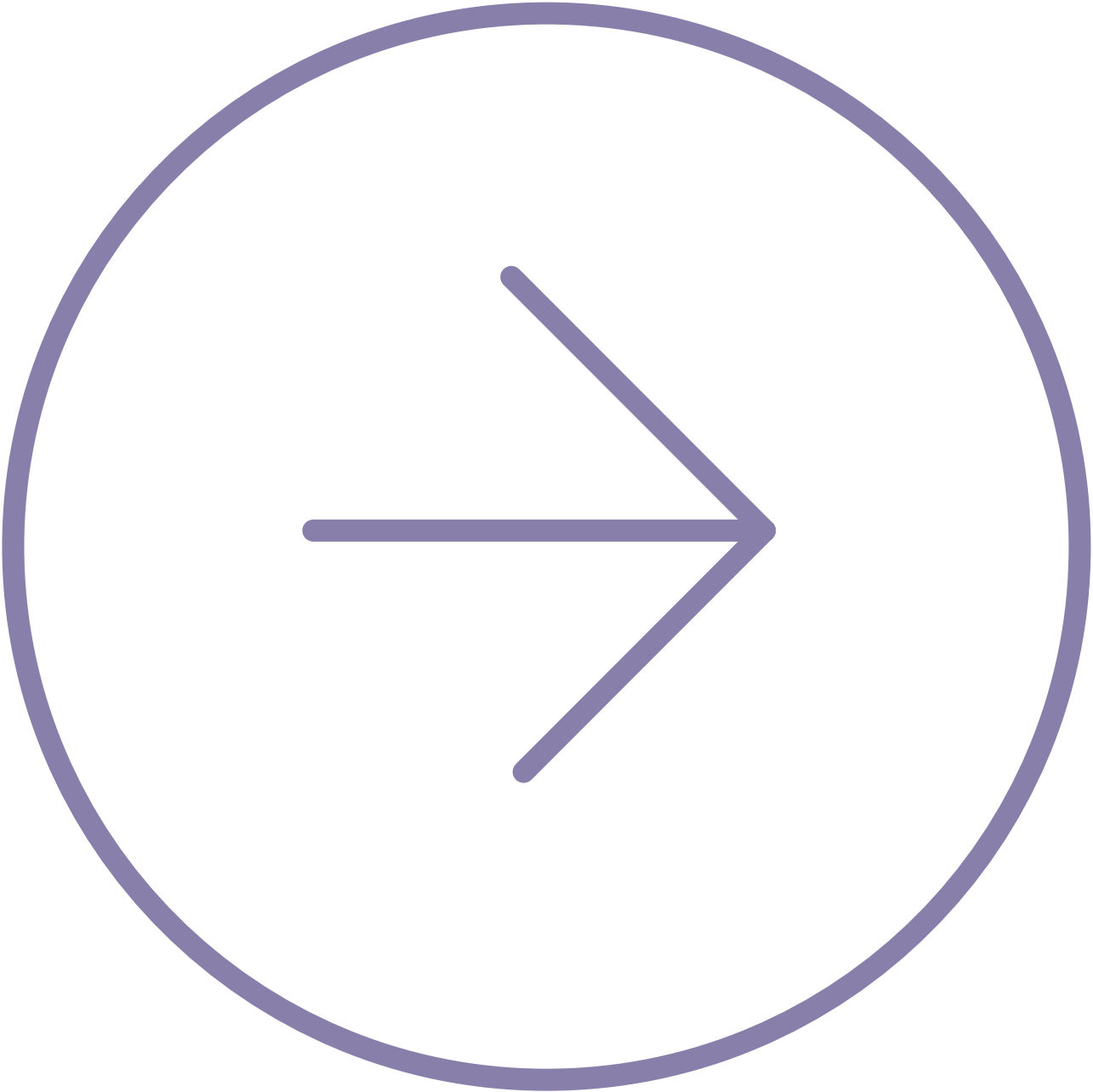
Acting today for a sustainable tomorrow. Together, we're transforming our world for better, for all, for good – as we push ahead on our #OurPathTo2030.

Sustainability Report 2023–24



Contents

Introduction	3
Carbon and energy management	5
Environmental management	11
Circular economy	14
Biodiversity and nature positivity	19
Education for sustainable development	22
Research for sustainable development	26
Sustainable travel	31
Acknowledgements	33





Sustainability

At the heart of
every decision
we take

Sustainability remains a key strategic driver for UWE Bristol. We continue to find creative and impactful responses to the climate and nature emergency. Climate action and sustainability are increasingly embedded into the fabric of how we operate – into our teaching, research and outreach activities, and into how we design, build and run our infrastructure.

This report, put together by our sustainability team, shows some of the highlights in progress towards our seven main sustainability commitments, including a taste of the activities happening in our twin academic functions of teaching and research. Further details can be found at uwe.ac.uk/about/values-vision-strategy/sustainability.

2023–24 was a highlight in our sustainability journey, having been recognised as Sustainability Institution of the Year in the 2023 UK and Ireland Green Gown Awards. However, we know that we need to double down on our efforts, to reframe, regroup and refresh our approach. As we near the mid point of our 2030 strategy we continue to find ways of supporting the regional and global response to the complex environmental, social and economic challenges the world faces.

In this report, we set out our progress and share our highlights from academic year 2023–24.



November 2023 saw UWE Bristol awarded with the UK and Ireland Green Gown Award for Sustainability Institution of the Year.



Winning this prestigious award is a fantastic endorsement of UWE Bristol's exceptional commitment to sustainability and of the efforts of many staff and students. It validates our efforts to inspire and motivate others to practice sustainability and responsibility."

Professor Sir Steve West

Carbon and energy management

The background features a large, abstract geometric shape on the right side, composed of several interconnected triangles and polygons in shades of teal and dark teal. The shape resembles a stylized staircase or a jagged arrow pointing upwards and to the right. The left side of the image is a solid, lighter teal color.

In 2023–24 we published our two-year plan to keep us on track with our energy and carbon reduction targets in line with the net zero 2030 ambition.

After the awarding of £2.6 million Salix Finance funding to support our District Heat Network (DHN) expansion, 2023–24 was dominated by the planning, preparation and commencement of this keystone project for the decarbonisation of Frenchay campus.

We’ve seen continued roll out of our solar generation capacity with more roof space accommodating panels to provide clean electricity for our buildings. We’ve worked with Estates projects teams to plan for low carbon retrofit and consolidation of space to reduce energy demand further.

Heat Decarbonisation

Frenchay Campus

The extension of the DHN for Frenchay campus has seen connections established for sixteen additional blocks and the remaining part of our Wallscourt Park accommodation buildings, meaning that now almost 60% of the total floor area at Frenchay is heated through this one system. With a future connection to a low carbon heat source planned, this has accelerated preparation for the campus to become net zero.

For those buildings on site that are not connected to the DHN we have continued to progress plans for individual low carbon heating systems to be installed at a later date.

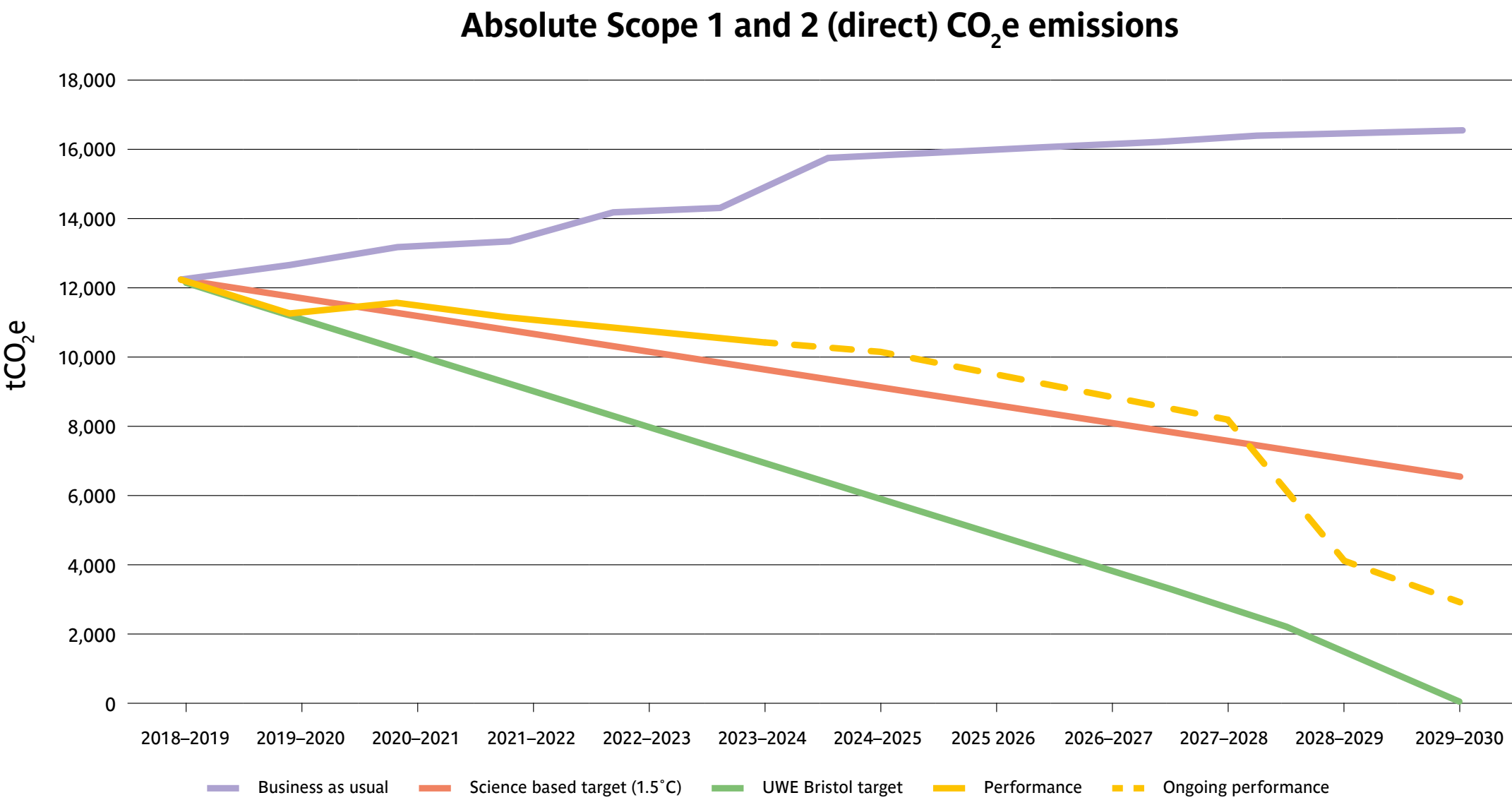
Bower Ashton campus and other sites

Heat decarbonisation plans continue to develop for the Bower Ashton campus and other sites, with solutions looking to be a mix of connecting to wider heat networks where possible, and independent air source heat pumps.

Solar PV: Frenchay campus and other sites

Solar panels have been installed on W Block, as well as an addition to the solar array on T Block. These, and the completion of the new Purdown View accommodation blocks which have solar installations, have increased the Frenchay generation capacity by 87%.

We’re planning to continue our expansion of solar panel coverage through installations on our existing Student Village blocks, which we hope will begin in 2025.



New build student accommodation

Our new Passivhaus accredited student accommodation project was completed in 2024, achieving the accolade of the largest student accommodation project to be built to Passivhaus standards in the UK. Passivhaus ensures that a building is designed and constructed to very high insulation and air tightness standards and therefore requires only minimal heating to keep it comfortable. The operation of the building is low energy and low carbon, keeping the growth of our largest campus in line with our net zero target.

The project, now known as Purdown View, won UWE Bristol the **2024 Cubo Innovation in Student Housing Award**.



Engaging students, staff and communities, and increasing carbon literacy

Climate education course

In September 2023, we rolled out a brand new climate education course for all UWE Bristol students. A free online course, it’s designed to give students a broad basis of knowledge and understanding about climate change. It encourages them to think about their own action and changes they can make – and help others to make – to mitigate against climate change.

The development of the course was the result of an organisation-wide collaboration of academics, professionals, students and the Students’ Union creating nine modules, nineteen hours of learning which is all now available to all students and staff. Around 450 students logged in to watch the launch event and over 200 signed up within the first year to complete the course.

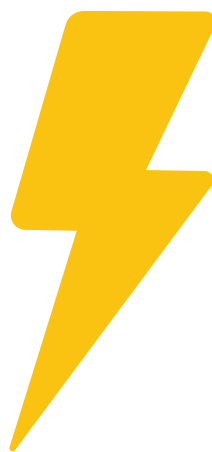
There’s more on our climate education course [here](#).

Workshops, programmes and initiatives

We also continue to run team workshops for staff on their carbon and sustainability impact. As well as helping to understand how each and every department contributes to the University’s carbon footprint and other environmental and sustainability related effects, we explore what practical and effective measures can be taken to reduce these impacts. This year, we ran sessions with the IT and Finance departments, our catering and hospitality team and with the Colleges of Business and Law and Arts, Technology and Environment.

We’ve also developed a new initiative to create a carbon footprint for university modules to see if this will help staff and students understand the impact of the choices made in preparing and running different courses. Working with one of our own Masters students and some volunteer course leaders we have developed a bespoke methodology for calculating module carbon footprints.

Carbon and energy management KPIs



Electricity consumption

27,733,919 kWh
(24,830,015 kWh from the grid;
409,670 kWh from onsite PV
generation; 2,494,233 from CHP)



Electricity procured

20% PPA
(Welsh and Scottish wind farms)
80% net zero



Gas consumption

29,717,039 kWh

Scope 3 Action Plan

As we continue to refine our understanding of our Scope 3 emissions, we are creating focused areas for action where we recognise we can make change.

Actively engaging our suppliers

We’ve been progressing on engaging with our suppliers to share knowledge on a net zero transition, encourage reporting on emissions and development of strategies that align with our ambition.

Working closely with the procurement team has opened up key areas to influence action. Data on construction and digital footprints have begun to be provided by some of our key suppliers allowing us to understand our impact in more detail and introduce new standards and expectations for future procurement and operations in these fields.

Digital footprint

In partnership with IT colleagues, we have worked to improve communication of the carbon footprint for our digital services and IT equipment and considered routes to reduce the emissions associated with these. The ITS sustainability action plan initially focuses on improving data and introducing guidance and requirements within procurement practices to encourage choices that are lower carbon.

Construction

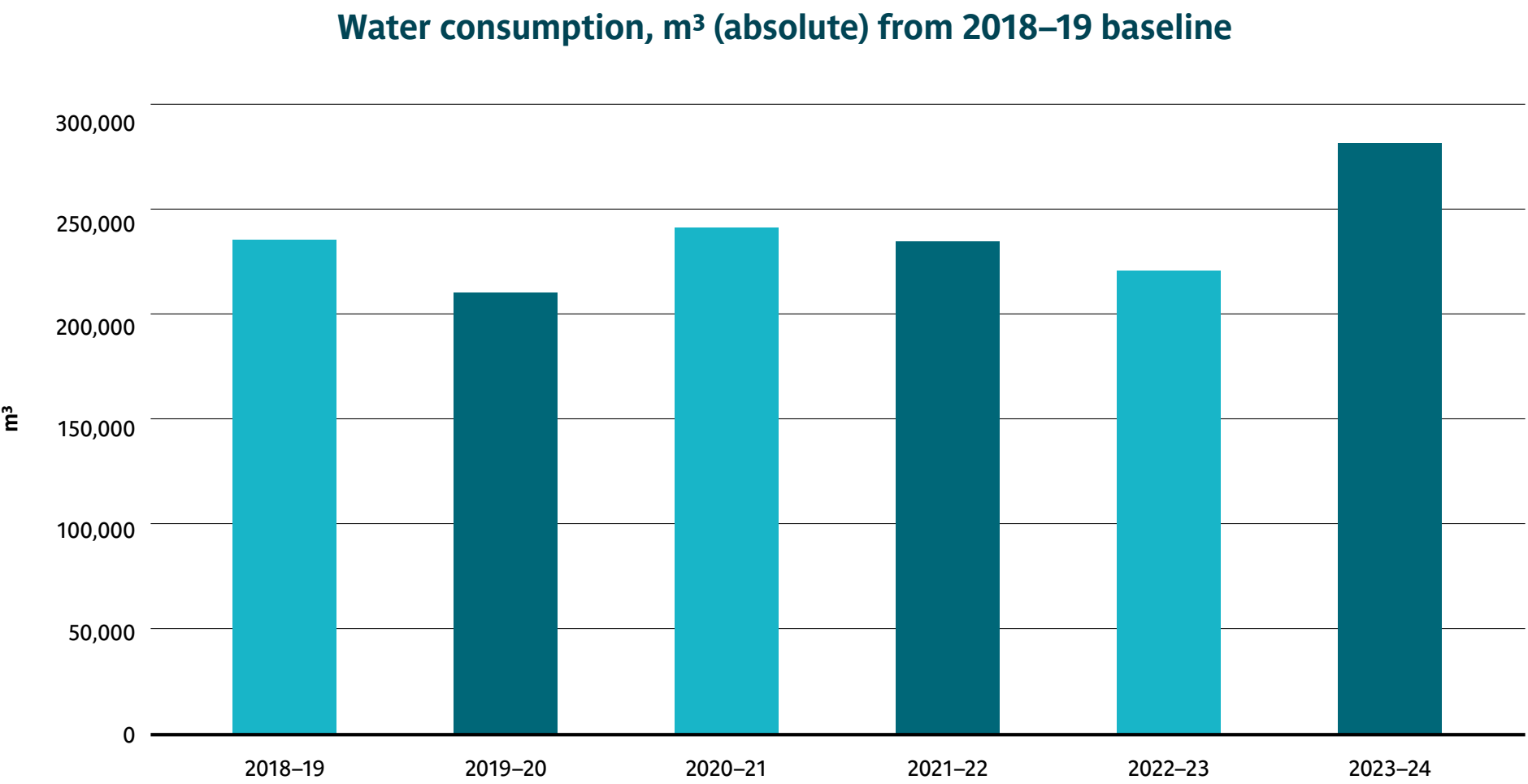
Working with the developers of our newly completed Passivhaus accommodation, we have gained our first full insight into the Scope 3 emissions that occur as part of a construction project on site. As a result we have introduced new standards into our University design guide for embodied carbon for the first time.

Water Management Plan

We’ve continued our active monitoring of water meters across our campuses, picking up leaks and alarms on a regular basis and reporting these for immediate investigation, which has helped us make savings once again. Since we started this programme we have saved on average £100 a day by identifying and fixing leaks promptly.

We have made particular progress on a persistent leak that we have been aware of for some time on our Frenchay campus. This has been a dedicated process of using meter data and onsite knowledge to gradually narrow down potential locations within the water pipe network where the leak may be found. Now we have identified the source, we are making plans to repair the leak without causing major disruption.

Water use shows an increase over the 2023–24 year following the addition of 900 student bedspaces on the Frenchay campus.



We continue to lead the sector in our reporting of Scope 3 emissions, incorporating increasing amounts of real supplier data. While some of this data (especially relating to supply chain) represents a 'best guess' of our impact, growing our understanding is critical to driving change. We continue to strive for better data. In 2023–24, we reviewed the way we established baseline data for student travel and commuting and we began work developing a methodology for measuring emissions from individual modules.

Scope under GHG Protocol	Type/category		2018–19 (Baseline)	2019–20	2020–21	2021–22	2022–23	2023–24
Scope 1: Direct emissions	Total		6062	6510	7558	7101	6122	5445
Scope 2: Purchased electricity and heat	Market based	Total	36	25	20	27	26	24
	Location based	Total	6030	4756	4028	4055	4339	5042
Scope 3: Everything else	1. Purchased Goods and Services (includes 4. Upstream Transportation and Distribution)		24,707	25,046	25,402	32,948	35,919	51,705
	2. Capital Goods		10,947	12,327	8,791	8,480	14,621	8,694
	3. Fuel and Energy Related Activities		1,269	1,246	1,628	1,560	1,671	2,297
	5. Waste		39	34	41	44	53	8
	6. Business Travel		3,734	4,040	4,040	2,196	3,994	4,275
	7. Employee Commuting and Homeworking		3,696	3,696	3,696	3,234	3,332	3,777
	9. Student commuting and travel to campus (TOTAL)		19,284	22,368	28,378	31,072	40,788	42,913
	9. Student commuting and travel to campus	9a. Daily Student commuting	9,791	11,297	14,325	13,552	13,552	14,835
		9b. Termly travel for UK based students	1,330	1,358	1,369	1,456	1,577	1,366
		9c. International Student travel	8,163	9,713	12,684	16,064	25,659	26,713
	13. Downstream leased assets		244	347	794	616	467	188

Please note all data is accurate at time of publication and subject to future revision.

Environmental management

The background features a large, abstract geometric shape on the right side, composed of several nested, parallel lines that create a sense of depth and movement. The shape is primarily a medium teal color, with some sections in a darker teal, creating a layered effect. The overall composition is clean and modern, with the text on the left and the graphic on the right.

Sustainability is embedded within our activities and both these accreditations encompass the whole university. June 2024 saw UWE Bristol's environmental management system recertified with to the international standard ISO14001:2015 by a team of external auditors with no major issues.

We continue to have – and are fully committed to – clear targets and plans to reduce water and energy use, cut waste generation (including food waste), and support biodiversity. The standard also means we're committed to continually improving the way we manage these plans and targets. External auditors reported that UWE Bristol's environmental management system is designed to support the institution's strategic direction and deliver intended results. Strengths of the management system were seen in many areas, including:

- Documentation
- Monitoring
- Review processes
- Sustainability and biodiversity initiatives
- Overall monitoring
- Commitment towards environmental performance improvement
- Leadership commitment.



A successful collaboration between SOS-UK, UWE Bristol staff and the UWE Bristol SU in the 2022–24 cohort of Fairtrade accreditations meant a renewal of our Fairtrade University Award until 2026.



Holding ourselves to high standards extends to our hospitality offerings too, as we continue to source much of our food to accredited standards.

Our beef, chicken, pork and lamb are Red Tractor Assured, allowing traceability to independently inspected farms in the UK.

We continue to use free range shell eggs, for which Compassion in World Farming awarded us their Good Egg Award.

UWE Bristol uses products accredited by the Marine Stewardship Council and continues to honour our pledge to not serve fish from the ‘fish to avoid’ list.

Our milk is locally-sourced and organic and we continue to address issues in the supply chain towards all our palm oil being responsibly sourced by 2030.

Our flagship restaurant, OneZone on Frenchay campus, continues to hold the Soil Association Food for Life Silver Catering Mark, which we have now achieved for nine years in a row.

This award shows our commitment to making healthy eating easier for customers, and how we’re using eco-friendly, ethical ingredients. We continue to encourage the use of local produce, to support our local economy and protect the environment for the future.

In efforts to reduce food waste, we have expanded the use of the [Too Good To Go](#) app to more of our outlets. During 2023/24 we sold at least* 169 Too Good to Go food bags, which has lead to the following impact:

- Assuming four items per bag, saved 676 meals from going into the bin
- The company that runs the app estimate this has saved 456 kg of CO2

*Data represents four months from April–July 2024.

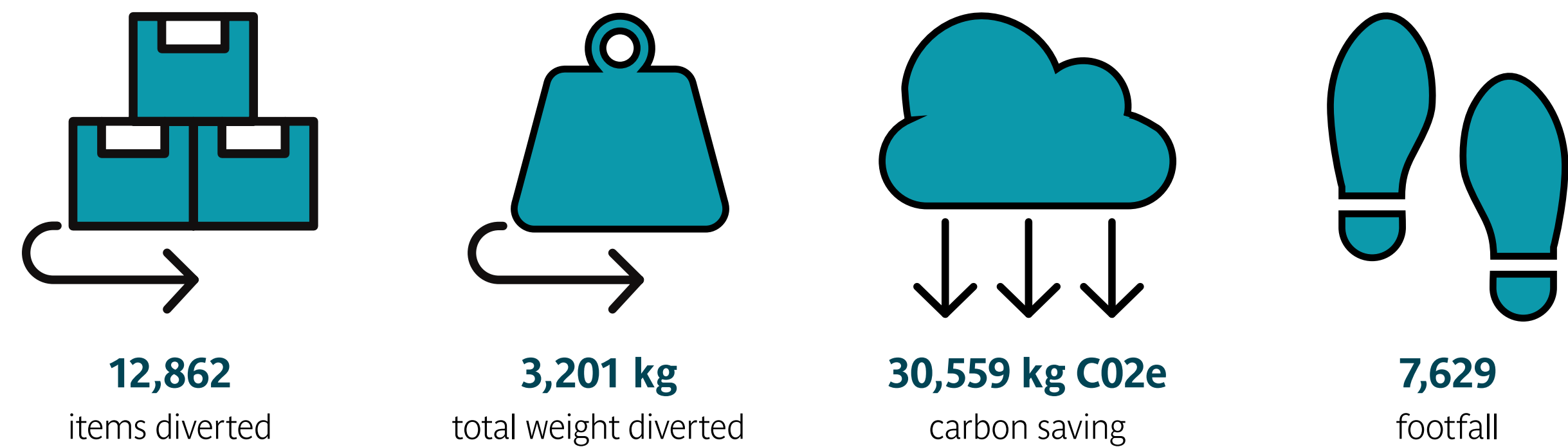


Circular economy

An abstract graphic on the right side of the slide. It features a large, light teal shape that resembles a stylized arrow or a series of connected chevrons pointing upwards and to the right. This shape is set against a dark blue background that fills the right half of the slide.

Sustainability Hubs

Sept 23 to May 24 (Frenchay Sustainability Hub)



From September 2023 the Frenchay Sustainability Hub was open 3 days a week, 5 hours a day in a new location (1D015). PAT testing of electrical appliances continued, with training for Hub Coordinator. For the first time the Hub opened over ‘Move In Weekend’ in September, with two free items offered to every student who visited the hub. This proved popular and put the Hub on the map for many new students.

The hub is thriving with increased footfall following initial trial period in 2022–23.

The Hub is staffed by a Co-ordinator via the Temporary Staff Unit (TSU), with 2 people in the post across 2023–24. Plans are in place for a permanent position as part of the Sustainability Team, to be in place by September 2024.

Fix My Tek continue to rent a space within 1D015 offering repair services to students and staff for non-UWE Bristol devices.

Bower Ashton Campus also has a Community Corner, run by the SU with a swap shop element for clothing. Using our average weight calculation 79kgs of textiles was reused between January and May 2024.

BOWER ASHTON
HIGHLIGHTS OF THE YEAR

Community Corner launched on January 22nd, since opening we have given out the minimum of:

- 234 items of clothing,
- 288 condoms,
- 980 cups of tea,
- 500 cups of coffee,

on drinks alone that is a saving to students of **£2864.**
(Counted between 22.1.24 - 22.5.24)

Cost of Living Support:
100 free hot meals + 30 free sandwiches every week
1000's of free Cost of Living provisions from the Community Larder.

Reuse Marketplace and supporting external partners

In June 2024 we launched the Reuse Marketplace; an online platform hosted on the intranet which enables all staff to upload photos and details of furniture or equipment no longer needed, and for other staff to request items. Between March 2024 (when it went live with a soft launch), and July 2024 145 items were shared and reused via the platform.

In addition, we worked with charity partners to reuse quality items which we no longer needed at UWE Bristol, below is a summary of all the reuse activity (apart from the Sustainability Hub which is reported separately):

- 2023–24
- Internal reuse savings: £45,972
- Value donated to charity: £33,832
- Waste diverted: 21 tonnes
- Avoided Waste disposal cost: £3,178

We will continue to develop the Reuse Marketplace in 2024–25, in particular through the recruitment of a Reuse Coordinator whose role will be to develop external reuse partnerships and promote the Reuse Marketplace internally across UWE Bristol.

Donations to external charities will also continue into 2024–25.

A page on the UWE Bristol website will be created to be public facing, where charities can be directed to and request IT related items, which will be considered on a case-by-case basis with IT colleagues.

The items donated can be broken down as follows:

Charity	Item type	Number of items
Network Counselling and Training	Furniture	10
Bristol Bike Project and Life Cycle UK	Bicycle	8
CollectEco	Furniture and Electricals	98
Unseen	Furniture	3
Southerns Broadstock	Furniture	380
Lockleaze Neighbourhood Trust	Furniture	88
Notton House Academy, SEN School	Carpet tiles	3169
Student Hardship	Laptop	18
Bristol Army Cadets	TV	2
Chibozu Community Trust, Zambia	Computer equipment	46
Digilocal	Monitors	2
TB Racing	Electricals	1
Watershed	Cameras and GoPro	13
St Brendan’s College	Computer equipment	150
Remake Charity	Computer equipment	5
	Total	3,994

Actions and targets for circular economy and waste

Suez started delivering the Waste contract for wheelie bins across the estate in September 2023. The roll out of separated recycling bins (plastic and cans and paper and cardboard as opposed to Dry Mixed Recycling) has been very successful. This includes student accommodation bin stores as well as those used primarily by Cleaning Team.

The table below shows 2023–24 data; of note is the recycling rate which has dropped to 48%, this was anticipated with the change from Veolia to Suez for the main waste contract. Suez now weigh each wheelie bin (waste and recycling) accurately whereas previously Veolia used average weights. We have found the weight of our recycling has decreased in comparison with previous years now we have the accurate weights. However, our overall waste tonnage has also decreased as a result of more accurate data.

In addition, we installed 13 vape bins across UWE Bristol estate which will support recycling of valuable lithium batteries as well as reducing risk of combustion in general waste bins.

Reuse activity has continued with donations to external charities as well as reuse within UWE Bristol community via the Sustainability Hub. However, we are still a way off meeting 10% target for 2030, but initiatives like Reuse Marketplace and increased footfall in the Sustainability Hub should support this in the coming year. The total reuse rate includes Sustainability Hubs, Reuse Marketplace, external donations and British Heart Foundation collections.

Year	Total waste, tonnes (excluding construction waste)	% change year on year	Recycling rate %	Reuse rate %
2018–19	1,756		55.7%	2.9%
2019–20	1,698	-3.3%	57.2%	1.0%
2020–21	1,633	-3.8%	59.2%	3.7%
2021–22	1,624	-0.55%	55%	2.1%
2022–23	1,899*	+16.9%	48.6%	2.2%
2023–24	1,253	-34.0%	48.3%	4.7%

*With 2023–24 methodology applied to 2022–23. This is an adjustment from the previously published figure of 1,629mt of waste generation for 2022–23.

Looking forward to 2024–25

Reuse activity is expected to continue to increase with the addition of a Reuse Coordinator role (responsible for growing the Sustainability Hub and supporting wider reuse activity at UWE Bristol). Close working with Accommodation team to capture reusable items at the end of term, as well as effectively disseminating them during Move In period is part of the plan for 2024–25.

UWE Bristol has clarified its position on reducing single use plastics on campus with a commitment to 4 student projects per academic year focusing on the WRAP plastic targets. This will provide Living Lab style research opportunities where students can interrogate UWE Bristol data and systems to offer solutions and innovation around how to reduce single use plastics.

Repair Workshops

The MAKERS project also went from strength to strength over this period. The fixometer below shows the environmental impact, but this project's achievements were also social, with 64 volunteers, including staff, students and volunteers from industry, contributing 591 hours of their time to repair items for 188 staff, students and community members, with 60% of items fixed on the day and another 27% sent away to source spare parts.

MAKERS Group achievements



8
events



188
participants



591
hours
volunteered

Environmental impact



248 kg
waste
prevented



1,556 kg
CO2 emissions prevented
That's like growing 26 tree
seedlings for 10 years.

*With 2023–24 methodology applied to 2022–23. This is an adjustment from the previously published figure of 1,629mt of waste generation for 2022–23.

Biodiversity and nature positivity

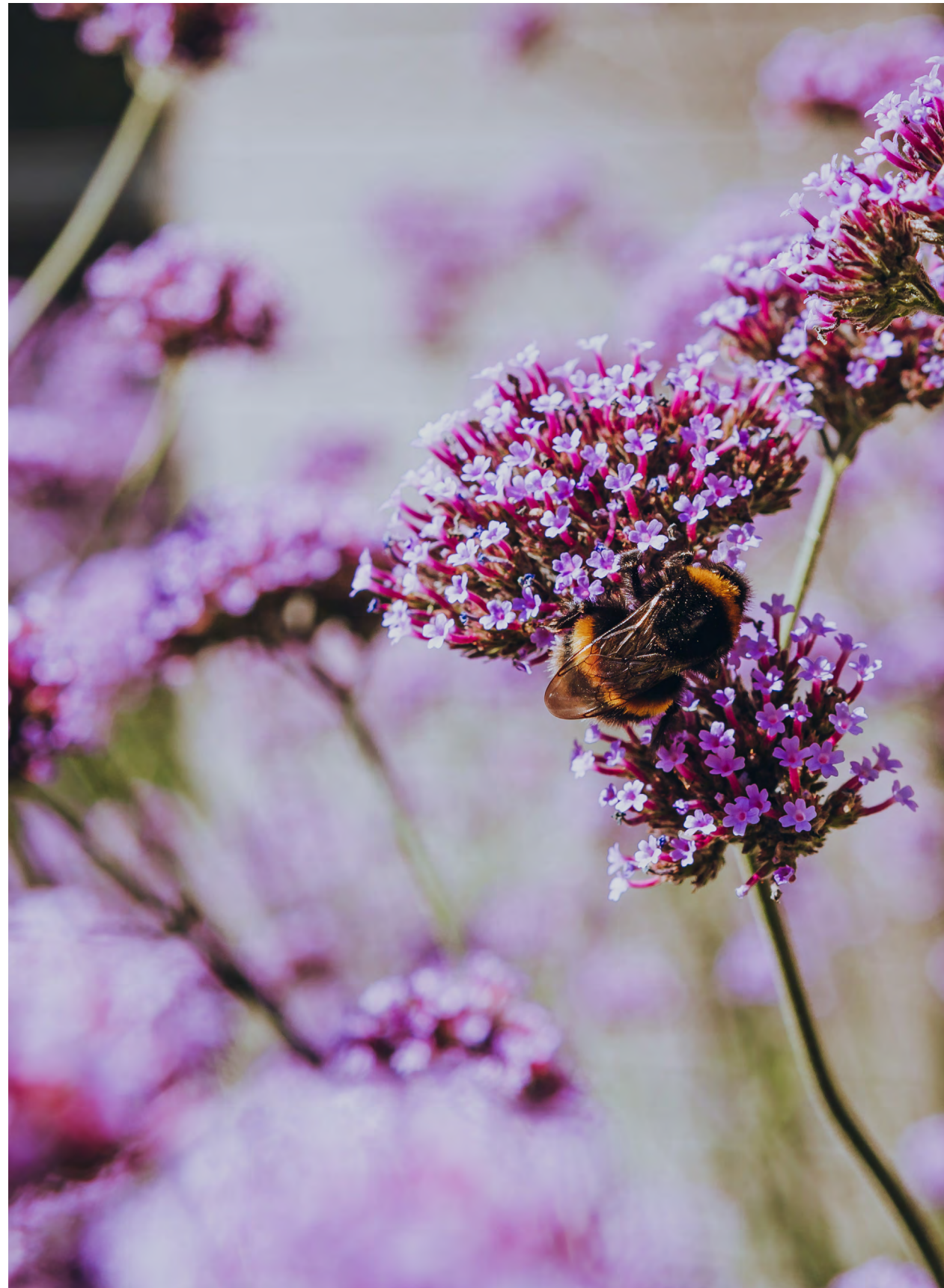
Nature conservation and restoration can provide solutions to both the climate and ecological crises. We depend on biodiversity to support the healthy ecosystems which provide our food, water, clean air and human wellbeing.

In 2024, UWE Bristol took the Nature Positive pledge in partnership with Nature Positive Universities. This means we'll be disclosing our impacts on nature and working to improve biodiversity across UWE Bristol estates and throughout our supply chains and other activities. By taking responsibility and leading as an example, we hope to encourage other organisations to do the same.



NATURE POSITIVE
— UNIVERSITIES —





Our dedicated, award-winning Grounds team are already key to ensuring biodiversity increases on campus and they continue to work hard to connect with students and staff through engagement channels such as the Beeline Champions group as well as delivery of practical community gardening, tree planting and wildflower planting events.

Our Beelines project, which provides edible plants for staff and students at the same time as benefits for our native pollinators, won the WECA Space for Nature Bee Bold Award.

We secured funding from WECA for a community pollinator fund. This fund aims to enhance biodiversity and pollinator habitat across the West of England, helping to deliver on the region's objective to increase the abundance of wildlife by 30% by 2030. UWE Bristol has spent these funds on erecting a 20m polytunnel with a view to growing as many of these plants as possible onsite.

Through UWE Bristol's Biodiversity Action Plan, the team ensure that tree numbers are never in decline and that the amount of Hedgerow available for habitat is always on the increase.

Genepools

We took advantage of the Genepools scheme run by National History Museum to sample some of the wildlife by means eDNA analysis and keenly await the results.



Education for sustainable development

The background features a large, abstract geometric shape on the right side, composed of several interconnected triangles and polygons in two shades of green: a medium green and a darker forest green. The shape resembles a stylized staircase or a jagged arrow pointing upwards and to the right. The left side of the image is a solid medium green, providing a high-contrast background for the white text.

Partnership and Outreach

During 2023–24 UWE Bristol partnered with and supported numerous local, regional and national sustainability events, including in partnership with the Bristol Natural History Consortium. Examples of these initiatives are:

Festival of Nature

UWE Bristol staff and students ran an engagement tent as part the Wild Weekend event on Millennium Square. Over the weekend an estimated 15,000 visitors took part in the celebrations and finding out ways to take action for nature. UWE Bristol experts additionally supported a programme of talks and screenings in the Aquarium's former Imax theatre, with Marian Clements and Verity Jones joined a panel of experts for the Fantastic Minibeasts and Where to Find Them show. Additionally Marian Clements advised the production of large Buzz and Scuttle displays, which were exhibited at Wild Weekend and our Bath City Centre event. The displays were created with funding from UWE Bristol.

Green Futures

UWE Bristol is a key collaborator on the WECA funded Green Futures project and this work will feed forward into the Festival of Nature in 2025 when hosting activities will connect young people and their parents with green skills and future career paths.

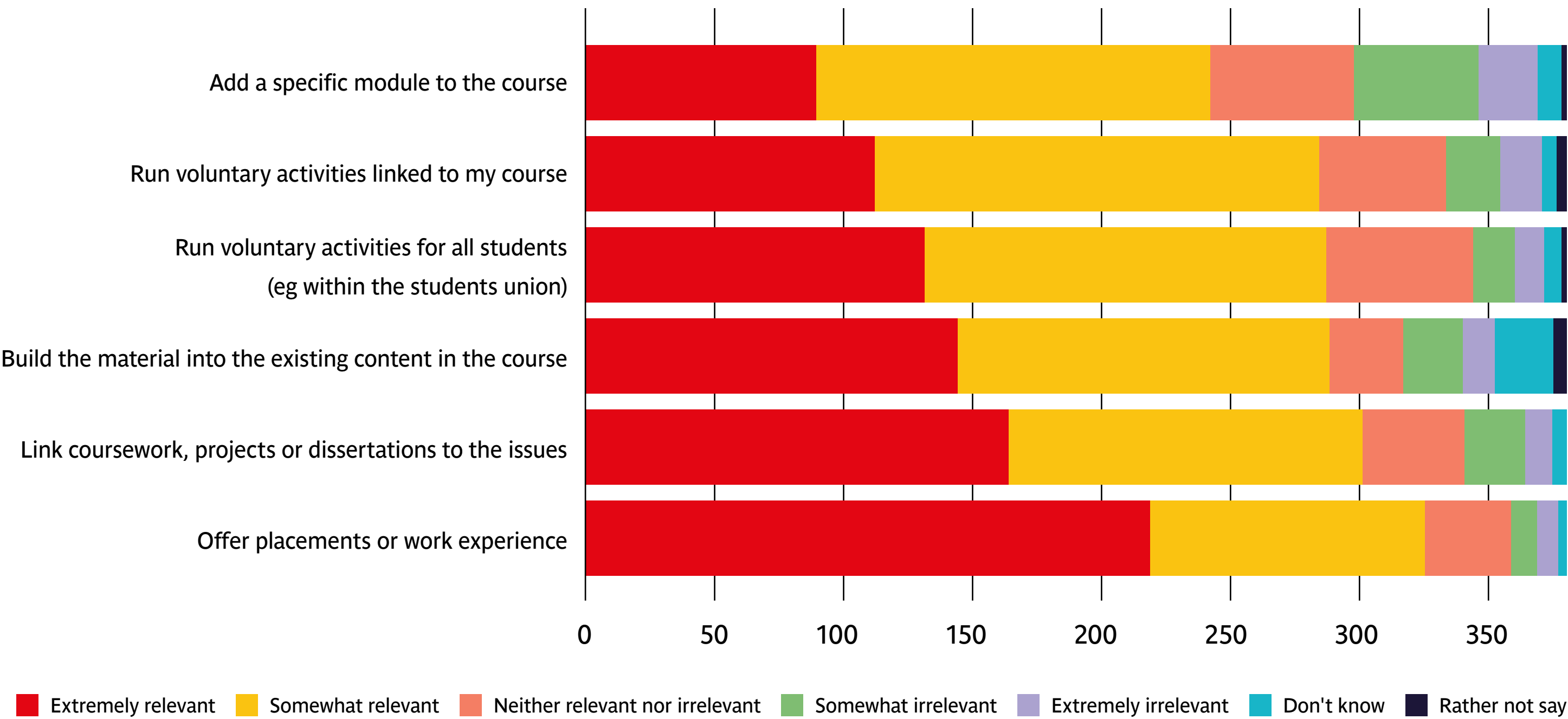
Communicate

UWE Bristol staff and researchers contributed to this national conference as speakers and delegates. The session Ethics and communication featured speaker Clare Wilkinson and Dr Laura Fogg Rogers hosted Decolonising conservation and environmental sectors in the UK using a social justice framework at the Bristol event. This year's Communicate took place in three locations and online, welcoming over 1,000 delegates over the three days to develop their skills, share best practice and debate latest issues in science communication, nature conservation.



Working with our students

- UWE Bristol took part in the annual **SOS-UK** Skills Survey which explores student perspectives on the importance of sustainability in their university experience and future employment. 80% of UWE Bristol students thought that sustainable development is something which all university courses should actively incorporate and promote. Students thought the best method for this would be through ‘placements/work experience’ and ‘inclusion in coursework, projects and dissertations’ (see the diagram below).
- The first half of the pilot year of UWE Bristol's new Climate Education course saw more than 300 students sign up and their feedback is inspiring the course's development
- March 2024 saw our staff engage once again with the annual SDG Teach In



ESD in Disciplines

Students were engaged in a wide variety of education for sustainable development interventions over the course of the year.

- Social Science students co-organised a public seminar titled ‘Renewable Energy for a Sustainable and Just Future: Regional and Local Issues’
- The Integrated Learning Framework for engineering education at UWE Bristol enables students throughout their undergraduate studies to work with external regional community groups to produce real-world outcomes through their learning from Year one to three.
- Environmental Science students also engage with sustainability from Year 1, in particular through the Environment and Society module, and then continue this thread through their programme including through final year modules on Energy, Carbon and Climate and Sustainable Futures.
- Nursing students also receive a grounding on sustainability through their first-year core module on Sustainable Global Public Health.

Carbon literacy

In early 2024, UWE Bristol colleagues and students took part in carbon literacy training. The day long course explored climate change, climate justice and future scenarios, climate change mitigation, carbon calculations and individual action. Attendees completed an assessment which was evaluated by the Carbon Literacy Project resulting in certification of staff and students.

This event followed Climate Fresk facilitator training run by colleagues in the School of Engineering in collaboration with Climate Clarity Community Interest Company. This three-day training event saw staff and students take part in a Climate Kick-Off event, a Climate Fresk training workshop, before going on to run a large-scale Climate Fresk event.



Research for sustainable development

The background features a large, abstract geometric shape on the right side, composed of several interconnected triangles and polygons in two shades of green: a medium forest green and a darker, almost blackish-green. The shape resembles a stylized arrow or a jagged, upward-pointing form. The text is positioned on the left side of the image, set against the medium green background.

Here at UWE Bristol, we maintain an active, vibrant research ecosystem of groups, centres and institutes. [See the full list.](#)

Our activities are strategically aligned with the UN Sustainable Development Goals (SDGs), so we've summarised the impact of our research in a series of case studies, the majority of which address one or more of the goals.

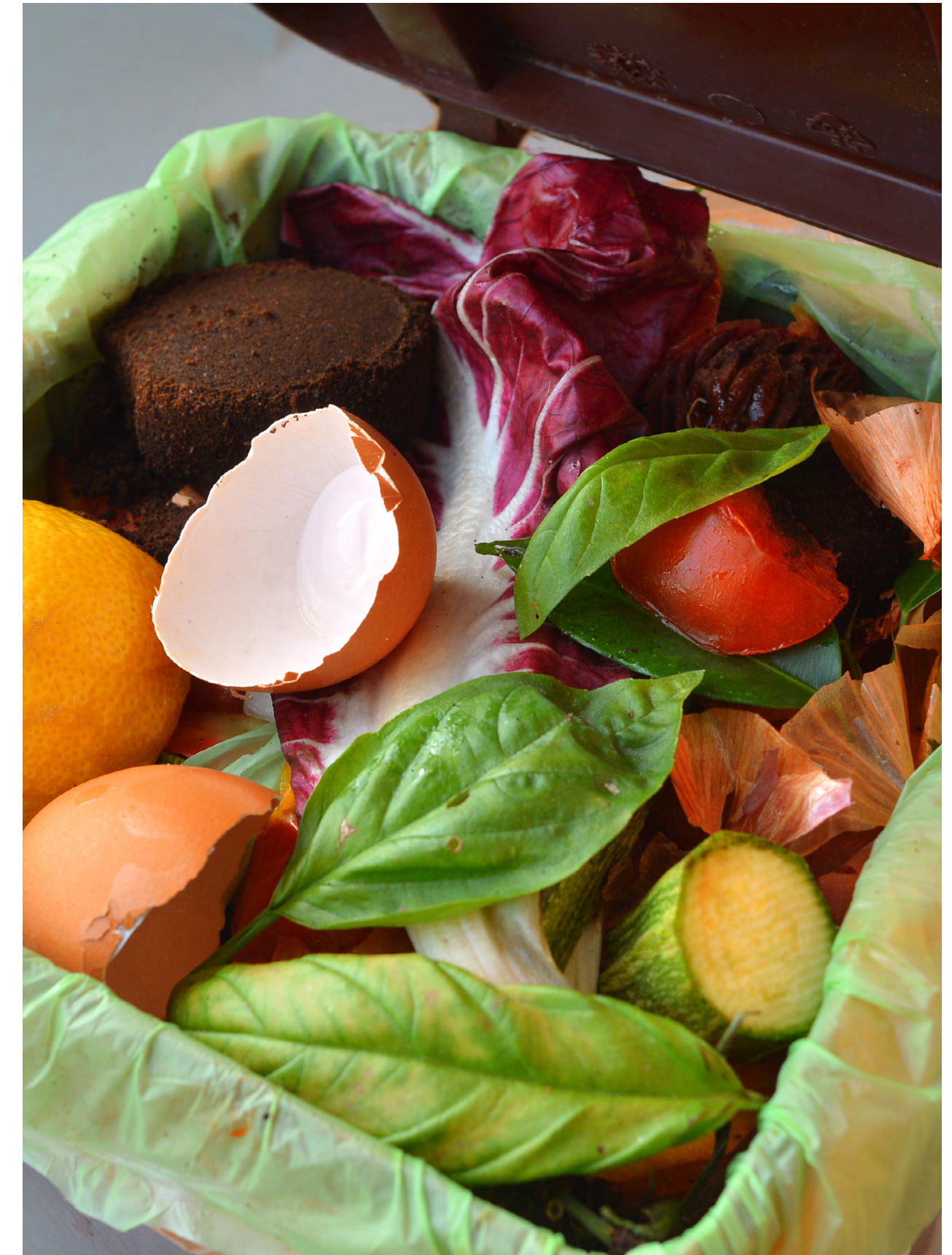
Taken together, you can see the wide range of current and recent work by UWE Bristol staff, clearly addressing environmental, sustainability and ecological challenges.





UWE Bristol's operations, sustainability targets and data collection became the subject of more than a dozen 'Living Lab' projects, where students are co-supervised by members of staff from our professional services. These ranged from looking at best practice in combining agriculture with solar PV; how waste energy policies may affect what happens to UWE Bristol's waste; food waste reduction and setting up community larders to student audits of our professional services' contributions to the UN SDGs and sustainability targets.

We are also leading the way in influencing how sustainably all research is being carried out: UWE Bristol is one of fifteen founder signatories to the Concordat for the Environmental Sustainability of Research and Innovation Practice. Hosted by the [Wellcome Trust](#), this agreement seeks to progressively embed environmental sustainability into all research and innovation practices.



UWE Bristol Research supporting the UN SDGs

We created a process by which researchers can tag their work by relevant SDGs. We aimed to increase the proportion of bids tagged against the SDGs and to increase the volume of research activity aligned to the ambitions of the SDGs. This is done in part under our 'Sustainability and Climate Change Resilience' research beacon. From 2022–23 to 2023–24 there was an 8% increase in the number of research bid applications mapped to at least one of the SDGs within this beacon (220 in 22/23 and 237 in AY23/24).

For the whole of UWE Bristol, the proportion of research bids tagged against the SDGs in 2023–24 was 92%.



Research Entities, Bidding, Research Outputs and the SDGs

The annual Times Higher Education Impact Rankings are a global benchmark of universities' performance towards fulfilling the UN Sustainable Development Goals, which are embedded in our **Transforming Futures** Climate Action and Sustainability Strategy. UWE Bristol's overall score increased between 2023 and 2024 ranking, while it's position in the rankings remained between 100–200.



People and Planet are a student network who run a UK-wide comparison of universities' performance dedicated to action around sustainability. We're proud to say that the 2023–24 academic year saw us occupy 11th place in the People and Planet University League, with UWE Bristol awarded '1st Class' status.



2023	Goal	2024	2023	Goal	2024	2023	Goal	2024
36	1 NO POVERTY	32	101–200	7 AFFORDABLE AND CLEAN ENERGY	101–200	57	13 CLIMATE ACTION	24
201–300	2 ZERO HUNGER	201–300	101–200	8 DECENT WORK AND ECONOMIC GROWTH	201–300	101–200	14 LIFE BELOW WATER	101–200
201–300	3 GOOD HEALTH AND WELL-BEING	101–200	401–600	9 INDUSTRY, INNOVATION AND INFRASTRUCTURE	401–600	101–200	15 LIFE ON LAND	43
401–600	4 QUALITY EDUCATION	601–800	44	10 REDUCED INEQUALITIES	30	70	16 PEACE, JUSTICE AND STRONG INSTITUTIONS	101–200
55	5 GENDER EQUALITY	301–400	301–400	11 SUSTAINABLE CITIES AND COMMUNITIES	301–400	301–400	17 PARTNERSHIPS FOR THE GOALS	101–200
93	6 CLEAN WATER AND SANITATION	101–200	79	12 RESPONSIBLE CONSUMPTION AND PRODUCTION	15	101–200	Overall rank	101–200
						82.2–88.2	Overall score	84.0–89.1

UWE Bristol's global rankings for each of the goals and its score and ranking overall. Each institution's overall ranking and score is determined by their best four performances for a goal and must include Goal 17.

Sustainable travel



Year-on-year improvements in sustainable travel

We are seeing a more settled picture with travel behaviours following the distribution following the covid lockdowns.

Our survey results show that single occupancy car travel has changed very little since last year. Journeying by bus or train has increased particularly among our students. Public transport has recovered from the difficulties earlier in the decade and the local bus network is widely used by students.

We’ve seen a significant decrease in walking by students, and a smaller decrease in staff, perhaps as people returned to the buses.

	Students		Staff	
	2022–23	2023–24	2022–23	2023–24
Single occupancy car journeys	21.2%	21.1%	45.0%	45.9%
Car share	6.4%	4.4%	7.0%	7.0%
Bus	25.3%	36.7%	12.0%	15.5%
Train	0.0%	6.2%	4.0%	3.2%
Cycle	4.6%	6.2%	20.0%	19.5%
Walk	39.3%	24.8%	9.0%	7.6%
Motorcycle	0.2%	0.6%	1.0%	0.0%
Other	3.0%	0.0%	2.0%	1.1%

Year-on-year improvements in sustainable travel

We’ve been working with the West of England Mayoral Combined Authority on its mobility hub project, aimed at delivering a suite of “WESTbusStop+” sites across the region.

Construction of such a facility got underway during summer 2024 at Frenchay campus. Here, people will be able to get on and off the bus, hire an e-scooter, securely store their bicycle, repair a puncture, charge up their phone, use free Wi-Fi, and enjoy a new shared seating area in a green "parklet".

The WESTbusStop+ being devised by WECA is part of their Future Transport Zone programme trialling new transport interventions in the West of England. The UWE Bristol WESTbusStop+ will be installed in autumn 2024.



Design concept for the new mobility hub at Frenchay campus bus interchange.

UWE Bristol is also part of the Bristol-wide Tier-Dott micromobility contract. E-bikes were rolled out across the city in the autumn of 2023, so people can now travel to our campuses by e-scooters and e-bikes. As part of this service there are two new e-cargo bikes available to all our staff, students, local residents and visitors.

Thank you

Jeff Davey

Paul Roberts

Joanna Dainton

Georgina Gough

Kirsti Norris

Abbie Basketter

Tom Finn

All inquiries to:

sustainability@uwe.ac.uk