



# PURDOWN VIEW ACCOMMODATION SITE INFORMATION

900 study bedrooms, 120 flats and 29 studios

[uwe.ac.uk/accommodation](http://uwe.ac.uk/accommodation)



# Your flat and study bedroom

Purdown View is made up of flats ranging from four occupants sharing a flat to eight occupants per flat. There are also 29 premium studio apartments as well.

- Residents share an open plan kitchen and living area.
- Study bedrooms are ensuite or shared between two residents. Bathrooms have a shower, toilet and washbasin.
- All accommodation is self-catering.

Study bedrooms are single occupancy. Electricity, water and ASK4 internet services are included as part of the rent.

## Kitchen and lounge area

In the kitchen, residents will have fridge-freezers, a hob and oven, a microwave and a kettle. The number of amenities will depend on the size of the flat, with the larger flats having access to more fridges, freezers, hobs and ovens. You will need to bring our own crockery, cutlery and cooking utensils.

The lounge area has a space to unwind and relax on the sofa in front of the television. There is also a dining table to enjoy meals at with your flatmates.

To keep things clean, you will be provided with a Hoover, ironing board, and mop and bucket. You'll need to provide other cleaning materials yourself.

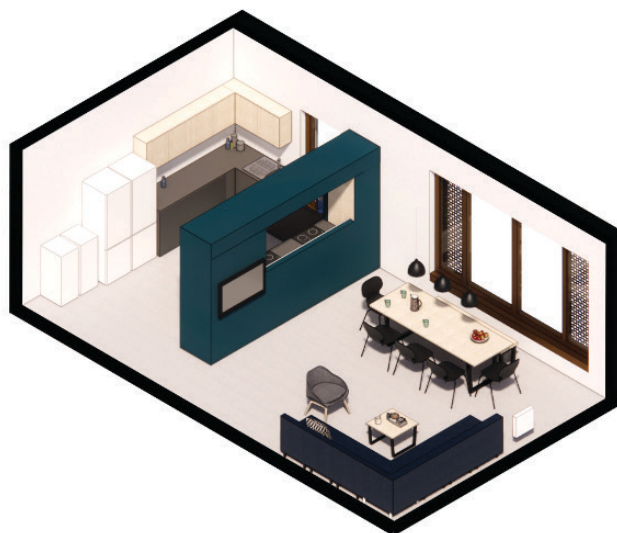
## Study bedroom

Study bedrooms in Purdown View are single occupancy. There is the option to have an en suite bathroom or share between yourself and another flatmate. All bathrooms consist of a toilet, a washbasin and a shower.

All flats have single beds, apart from the premium four bed flats which have double beds. Each bedroom also has a wardrobe with hanging space and shelves, a mirror, a desk with a chair, a chest of drawers, bedside table, desk lamp and bookshelves. The rooms are fully carpeted and curtained. Please note that UWE does not cover TV Licences in the study bedrooms and this will need to be acquired separately.

## Studio Accommodation

Purdown View also offers 29 single occupancy studio flats. The bedroom area is equipped with a double bed, wardrobe and desk. There is a shower room with a toilet and washbasin, as well as a small kitchenette with breakfast bar.

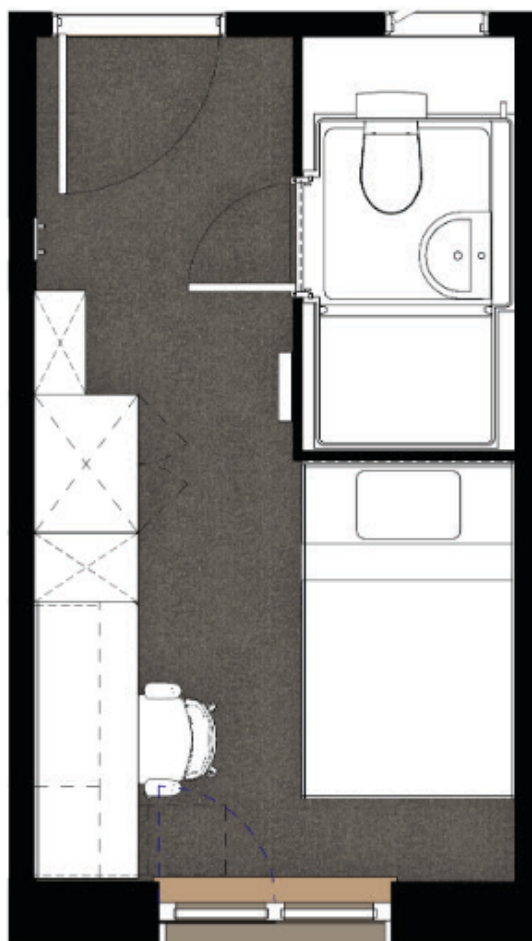


## Heating

Purdown View heating system is supplied by Prefect and consists of an Iris Controller unit which enables residents to control the temperature and set it to their desired heating level. The unit also has a sensor which detects changes in temperature, whether a room is empty or a window has been opened.

For further information about how to use your heater please see the following user guide: [browser.co.uk/uwe/how-to-use-your-student-village-heater\\_97681](http://browser.co.uk/uwe/how-to-use-your-student-village-heater_97681)

## Typical room layout



# Other facilities

## Laundry

Purdown View has onsite laundry facilities that residents will have access to.

The facilities are operated with the use of a mobile app (or laundry card if residents don't have a smart phone). Costs are displayed in each laundry area.

## Car parking

There are no car parking facilities on campus for residents unless you are a blue badge holder. We work closely with the council, police and local residents to ensure that students do not park in nearby residential areas, promoting good community relations with our neighbours. It is also a condition of your Licence to Occupy.

For more information about the local area see:

[browser.co.uk/uwe/student-village-local-area-guide\\_121533](http://browser.co.uk/uwe/student-village-local-area-guide_121533)

## Visitors parking

Visitor parking on campus is limited during the University's core hours (Monday–Friday 09:00–17:00). Your visitors should contact [carparking@uwe.ac.uk](mailto:carparking@uwe.ac.uk) for guidance prior to their visit. [uwe.ac.uk/parkingguidance](http://uwe.ac.uk/parkingguidance)

## Parking for motorbikes and mopeds

There is designated parking on campus for motorbikes and mopeds in Car parks 3, 4, 15 and 17, accessible at Northavon house via the North entrance on Frenchay Campus. No permit is required.

## Bicycle storage

There is lockable covered bike storage within the Student Village – please contact Customer Services for access. Bikes must not be stored inside the flats. We recommend the use of a good quality bicycle lock.

## Mail

Please ensure that all mail is properly addressed to include your flat number and student ID.

- Each flat has its own post box situated in the café area.
- Parcels that do not fit in the post boxes will be delivered to Customer Services.
- If you are not at home, post requiring a signature on delivery will be delivered to Customer Services and can be collected (during opening hours) after you have been sent an email letting you know it is ready. See local information for opening times.
- Please do not sign for other people's mail. It should only be collected by the addressee.
- It is an offence to open other people's mail.
- The University cannot accept liability for any items of mail that fail to reach the addressee.

## Shopping

There are convenience stores on Frenchay Campus, in The Students' Union and in the centre of the campus. They sell essentials like milk and toiletries as well as drinks, snacks and stationery. There are also several cash points and a fresh fruit and veg stall on campus.

Within walking distance of Frenchay Campus there's a retail park (Abbey Wood Shopping Park) and three supermarkets – ASDA, Lidl and Sainsbury's. Please don't bring shopping trolleys onto campus.

There are frequent bus services to the City Centre and The Mall at Cribbs Causeway, a large out-of-town shopping centre.

## Access and loss of key cards

Access to the Purdown View is via an access card which opens the courtyard pavilion doors as well as your block door, front door and bedroom door. If you lose your card we will provide a replacement for a small fee. Replacement cards can be obtained at Customer Services.

Please do not keep your property address with your card as this is a potential security risk. Please do not lend your card to anyone and report lost/stolen cards immediately to Customer Services. Staff will be able to issue you with a replacement access card. When Customer Services is closed, East Reception will issue a temporary access card and you will need to go to Customer Services the following day for a permanent replacement.

# Staff

## Customer Services

Customer Services is open daily between 07:00–19:00 and is located in 2N02 on Frenchay Campus, (next to OneZone). For assistance please drop in, phone **+44 (0)117 32 83601** (option 1) or email [accommodation@uwe.ac.uk](mailto:accommodation@uwe.ac.uk)

## Accommodation Managers

Accommodation Managers are available from 08:00–19:00 seven days a week to help you with day-to-day management of your accommodation. You can contact them via Customer Services or email [accommodation@uwe.ac.uk](mailto:accommodation@uwe.ac.uk) for non-urgent matters.

## Campus Support Officers (CSOs)

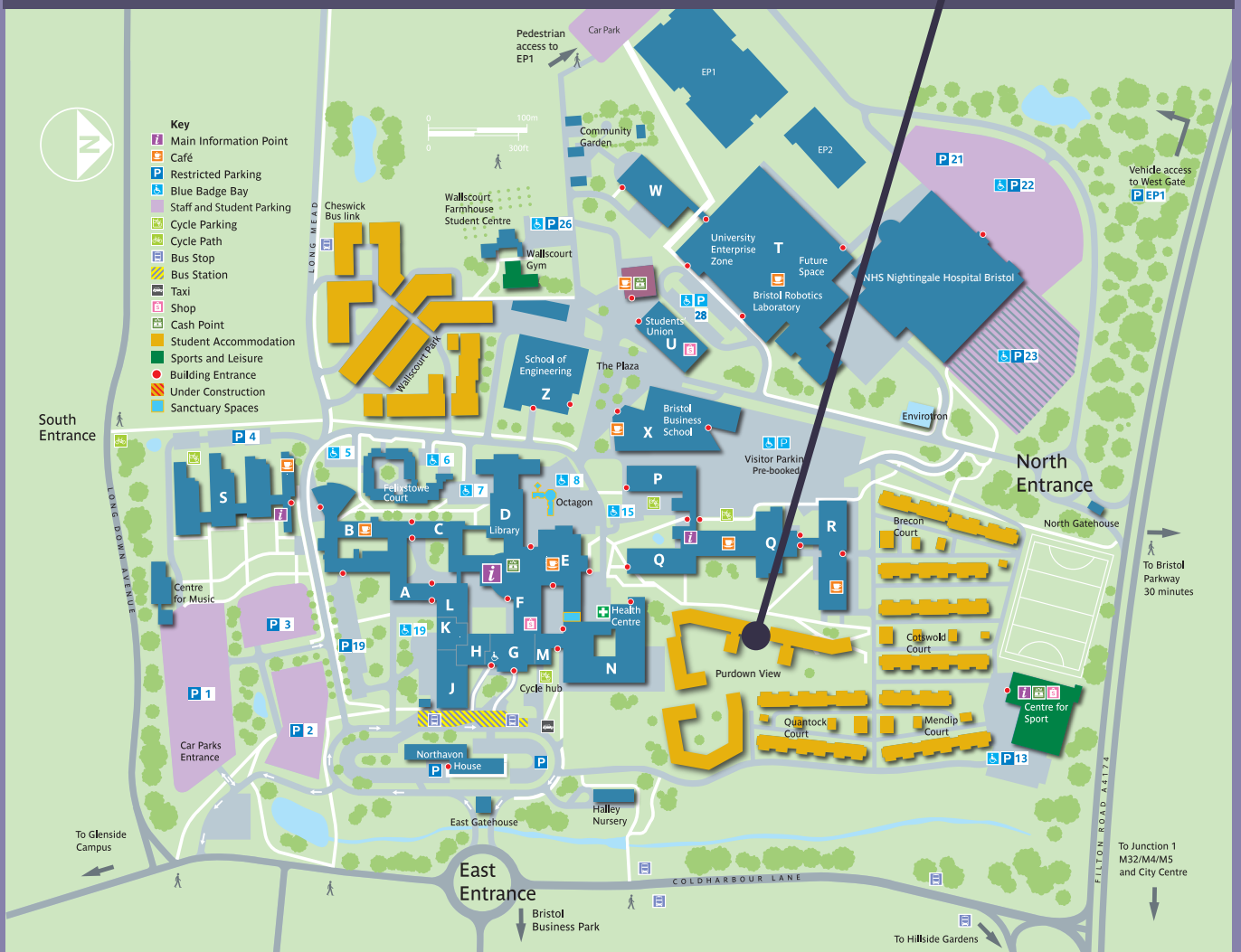
Members of staff working throughout the evening and weekend, who are available to help with fire alarm activations, noise complaints and patrol the campus to keep you safe.

## Out of Hours Team

For support between 19:00–07:00 and at weekends please call 07814 791212. For further information see: [uwe.ac.uk/life/health-and-wellbeing/get-wellbeing-support/out-of-hours-team](http://uwe.ac.uk/life/health-and-wellbeing/get-wellbeing-support/out-of-hours-team)



# Location – Frenchay Campus



## Accommodation Services

University of the West of England  
 Frenchay Campus  
 Coldharbour Lane  
 Bristol BS16 1QY

[uwe.ac.uk/accommodation](http://uwe.ac.uk/accommodation)

Email: [accommodation@uwe.ac.uk](mailto:accommodation@uwe.ac.uk)

Telephone +44 (0)117 32 83601

