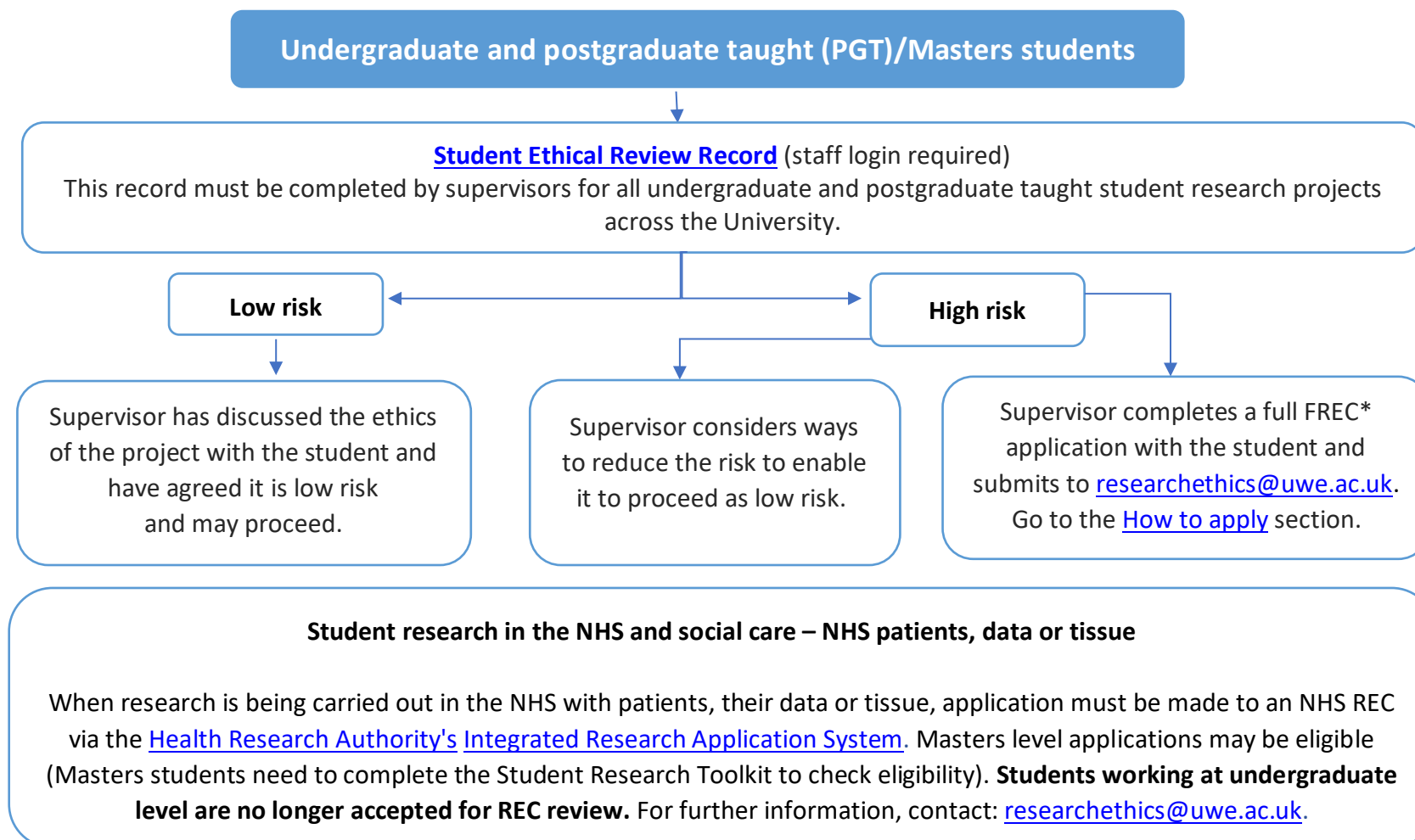


How to apply for ethical approval

If you are conducting research involving human participants, and/or their tissue or data, you should follow the appropriate route indicated below:



Please note: *All Faculty Research Ethics Committees (FRECs) will continue to meet and remain monitor their ethics applications separately until such time as the new ethics committee structure is finalised. This will enable all our systems, processes, communications, and ways of working to be aligned by the 2023-24 academic year.