

# **Psychosocial Adaptation to Burns: Current Knowledge and Future Directions**

John W. Lawrence, Ph.D.  
College of Staten Island  
City University of New York

# Topics covered in this talk

- Introduction to burns and their consequences
- Epidemiology of burns
- Stages of burn recovery
- Body Image, stigmatization and social integration after a burn injury
- Psychological and Social Interventions
- Future Directions

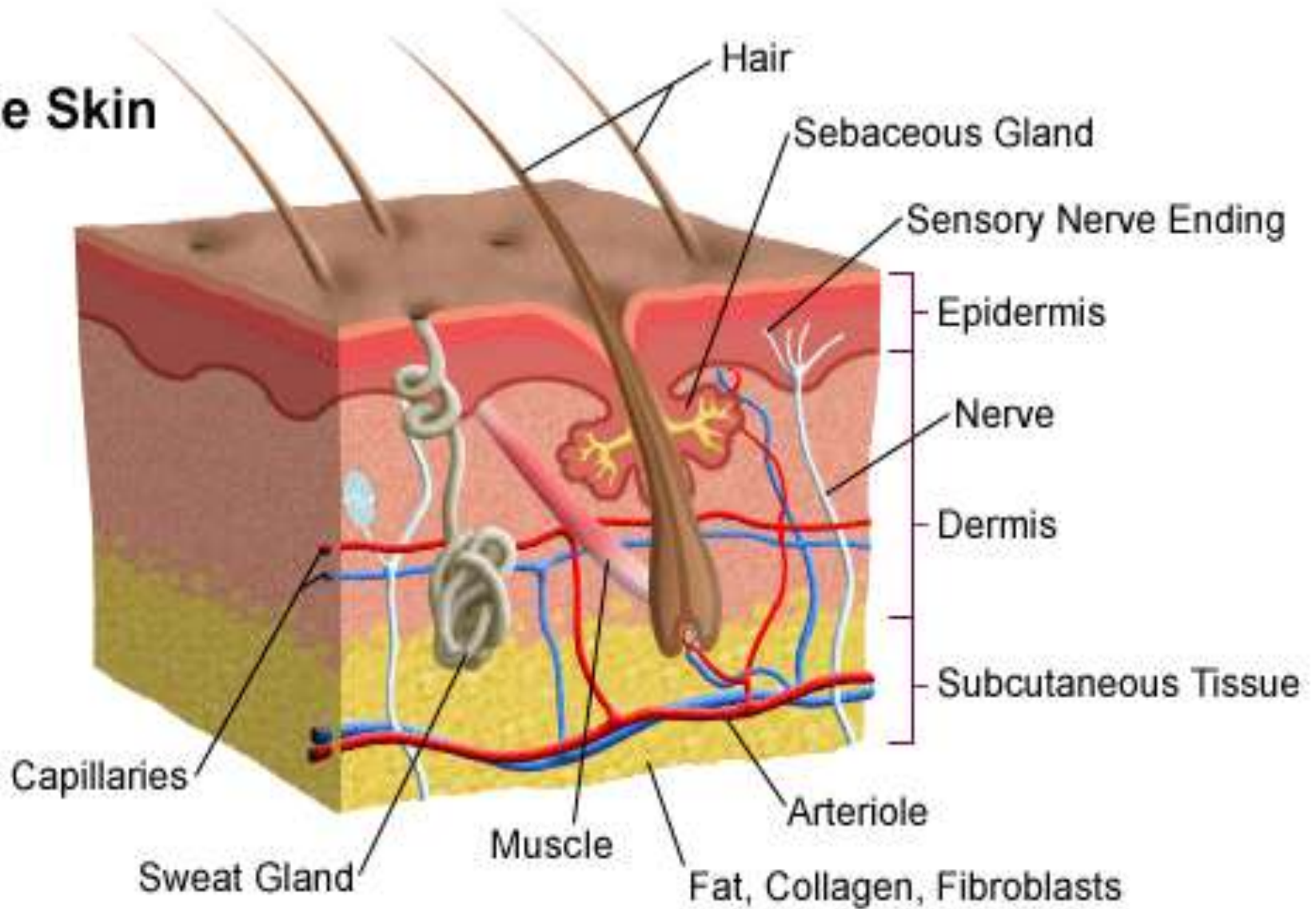
# A burn

- is an injury to tissue caused by a thermal agent.

# Causes of burns

- sun
- fire
- heat
- hot liquid
- electricity
- lightning
- radiation
- chemical agent.

# The Skin



# Severity of Burns

- First degree or superficial burns
- Second degree or partial thickness burns
- Third degree or full thickness burns
- Forth degree burns or damage to organs under skin

# First degree burn



# Second degree burn





# Third degree burn



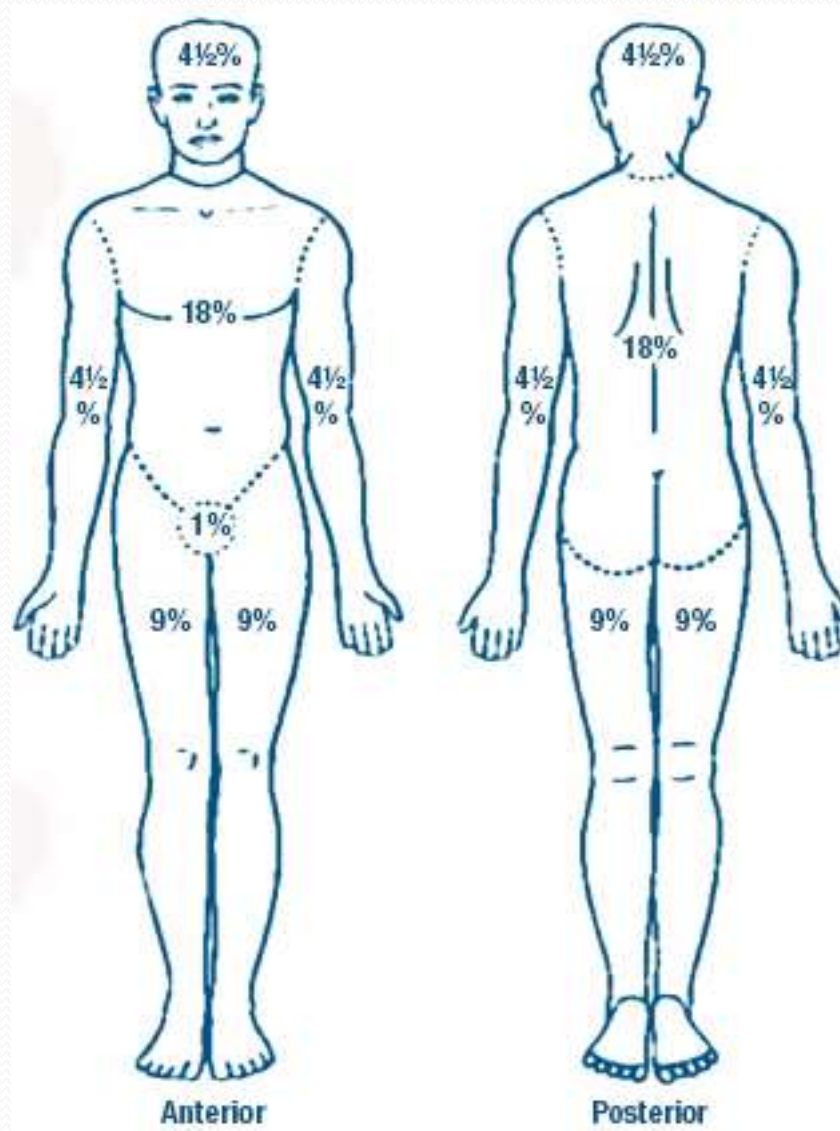
# Fourth degree burn



# Another Dimension of Severity: Size of burns

- Burns are evaluated based on the percentage of total body surface area (TBSA) of the wound.
- Burns of greater than 10% TBSA in children and 15% TBSA in adults are potentially life threatening.

# Burn diagram



# Common Physical Consequences

- **Change in one's appearance due to scarring**
  - **Burn scars often appear thick, rough in texture, dry, and discolored.**
  - **If the burn caused damage to body parts under the skin, burns can also cause changes in the shape or contours of body parts.**
  - **For example, face and head burns may result in the loss of part or all of a person's nose or ears.**
  - **Hypertrophic scars and keloids**
    - *are raised scars caused by an excess of growth of new skin cells.*

# Keloid Scars



# More Physical Consequences

- A scar over a joint which contracts can impede movement of the joint.
- Nerve damage
- Inability to sweat
- Loss of limb
- Chronic itching
- Acute and chronic pain
- Sleep difficulties

# Common Psychological Consequences

- Depression
- Post Traumatic Stress Disorder (PTSD)
- Negative Body Image
- Social Anxiety
- Substance Abuse
- Grief
- Guilt
- Sexual concerns



# Common Social Complications

- Stigmatization due to scarring
- Discrimination
- Catalyst for family distress
- Occupational difficulties and unemployment
- Financial catastrophe

# Possible Positive Outcomes

- Triumph of life
- Reassess priorities
- Discovering one's own resilience
- Reaffirm relationships with family and friends

# Epidemiology of Burns

- Whose most likely to get burned and under what circumstances?

# **Social Vulnerability Hypothesis**

- **It is often assumed that burns are random.**
- **Social factors influence people's risk of being burned.**
- **People who are low in social power are more likely to be burned.**

# Most Common Social Risk Factors

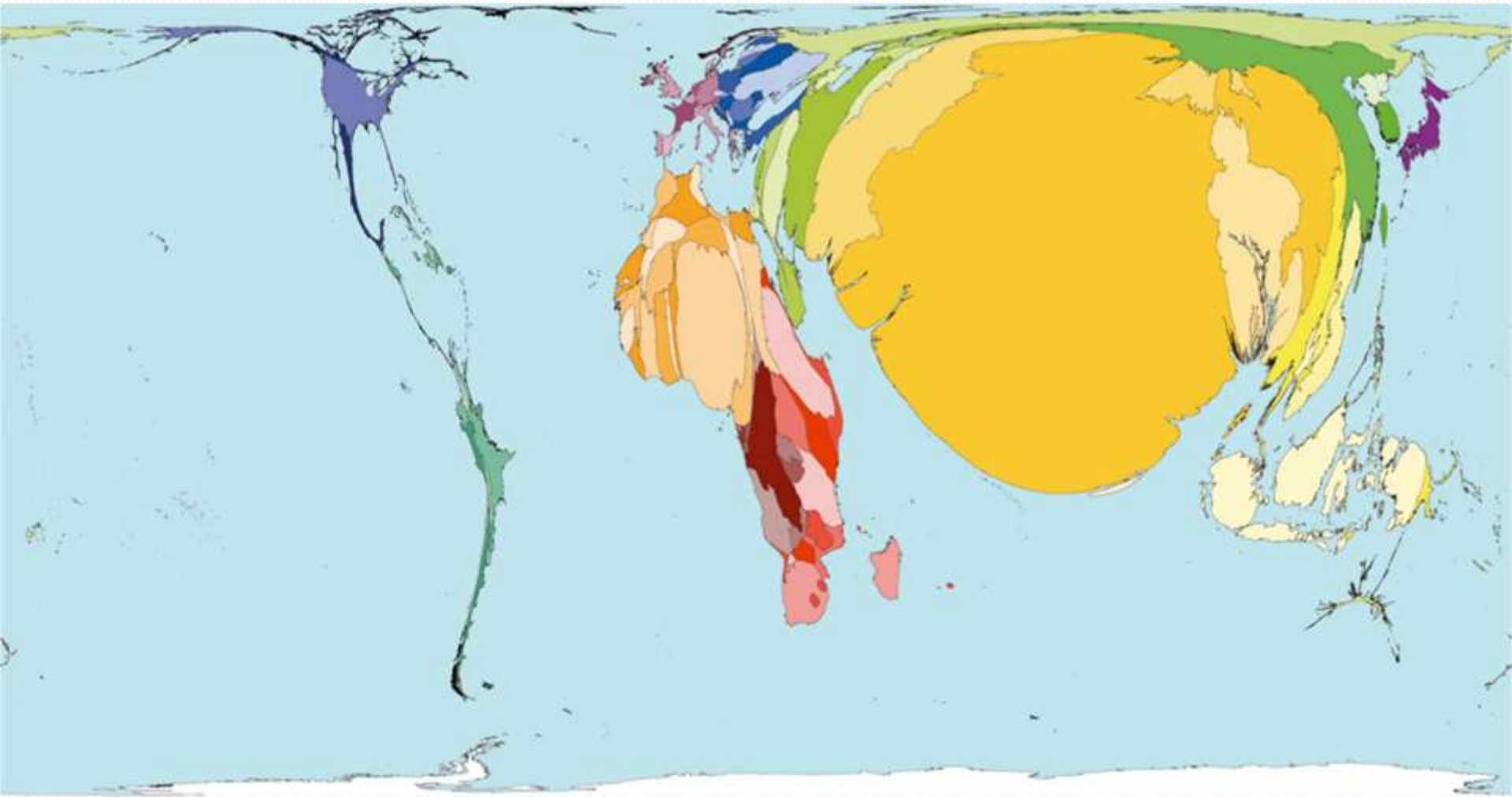
- **Low Social Economic Status (SES)**
- **Minority Race/Ethnicity**
- **Gender**
- **Age**
- **Psychological Status**

# Social Economic Status (SES)

- 95% of fire related burns occur in developing countries
- 90% of burn deaths occur in low and middle income countries
- Within countries, low SES groups are at highest risk (e.g., fire alarms).
- Regionally specific factors contribute to the relationship between poverty and burns.
- Scarce access to safe and affordable fuel sources
  - kerosene stoves and lanterns

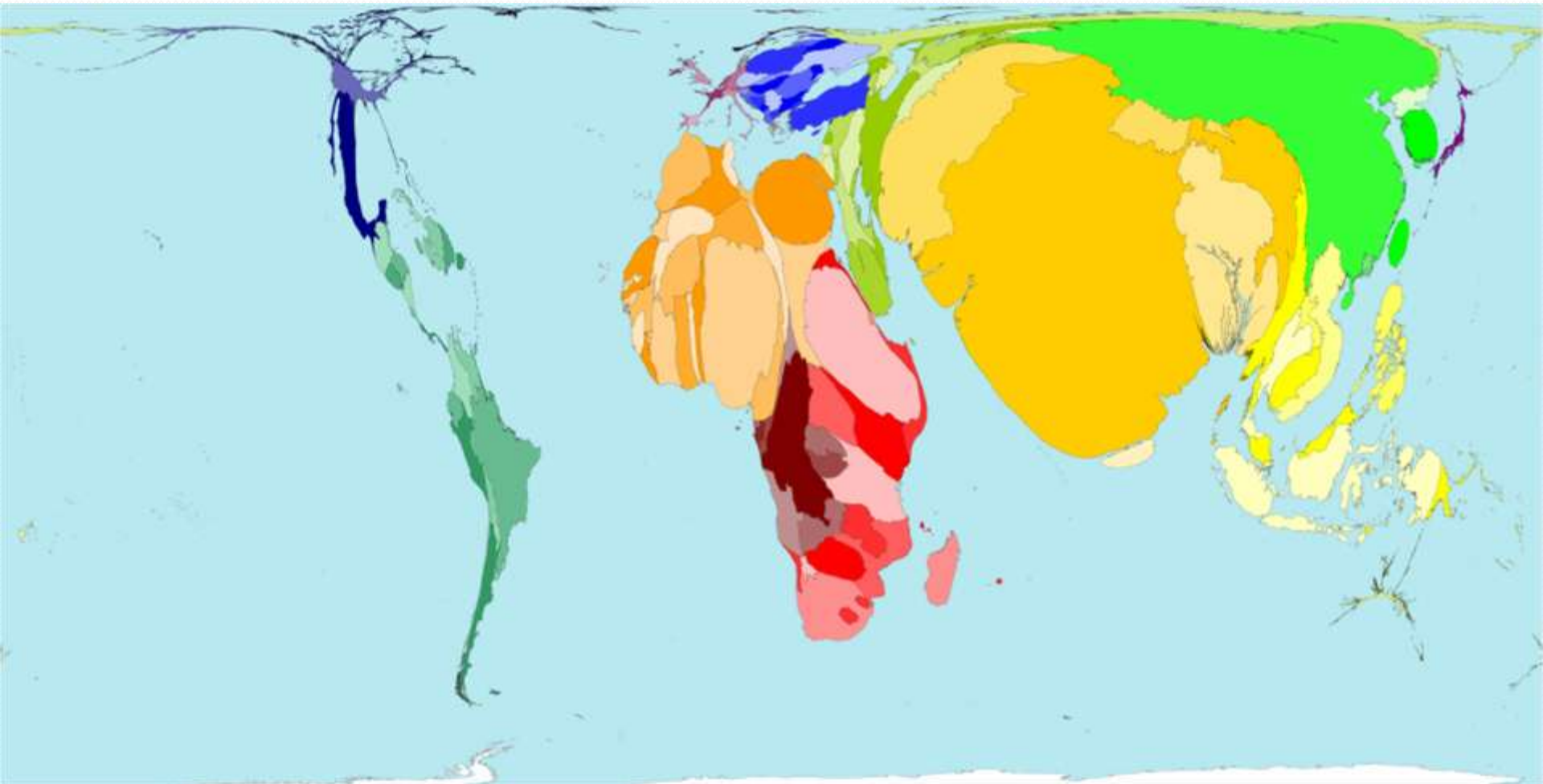
# Fire Deaths Density Equalization Map

from Pressman, Peck, & Knolhoff (2012). The correlation between burn mortality rates and economic status of countries. Poster session presented at ABA.



# Poverty Density Equalization Map

from Pressman, Peck, & Knolhoff (2012). The correlation between burn mortality rates and economic status of countries. Poster session presented at ABA.





# Gender

- **Boys greater than girls.**
- **Among adults, the gender distribution of burns is influenced by the safety conditions at work and at home which are often determined by the level of industrialization of a country.**
- **Industrialized countries: men**
- **Developing countries: women**
- **In cities in India, 25% of all deaths of women between the ages of 15 and 34 are burn-related.**
- **Culturally sanctioned sexual violence**

# Intentional Burns

- Assault Burns
- Child Abuse
- Self Immolation

# Assault Burns

- Around the world, the incidence rates for assault by fire and scalds ranging from 3% to 10%.
- Common circumstances include:
  - interpersonal conflict, including
  - spousal abuse
  - elder abuse
  - contentious business transactions

# Assault burns against women

- **Marital, Disputes, Bride Burnings and Dowry Disputes**
  - In India in 2008, there were 1948 convictions and 3876 acquittals for the crime of dowry death.
- In China and Bangladesh, it is not uncommon for women to be assaulted with acid in the context of a relationship dispute, often by a rejected suitor.
- In South Asia, Africa, and the Middle East, self-immolation is a relatively common form of suicide especially among young women attempting to escape servitude and abusive relationships.

# Lessons from epidemiology literature

- Low social power puts people at risk of being burned.
- Empowering people helps prevent burns.
  - As groups economic status improves the incidence of burns decreases
  - Increasing the education of women decrease the likelihood their children will be burned.
- In providing treatment for burn survivors clinicians must take into consideration the person's social resources.
- Often, what burn survivors need most is access to resources (health insurance, housing, employment).

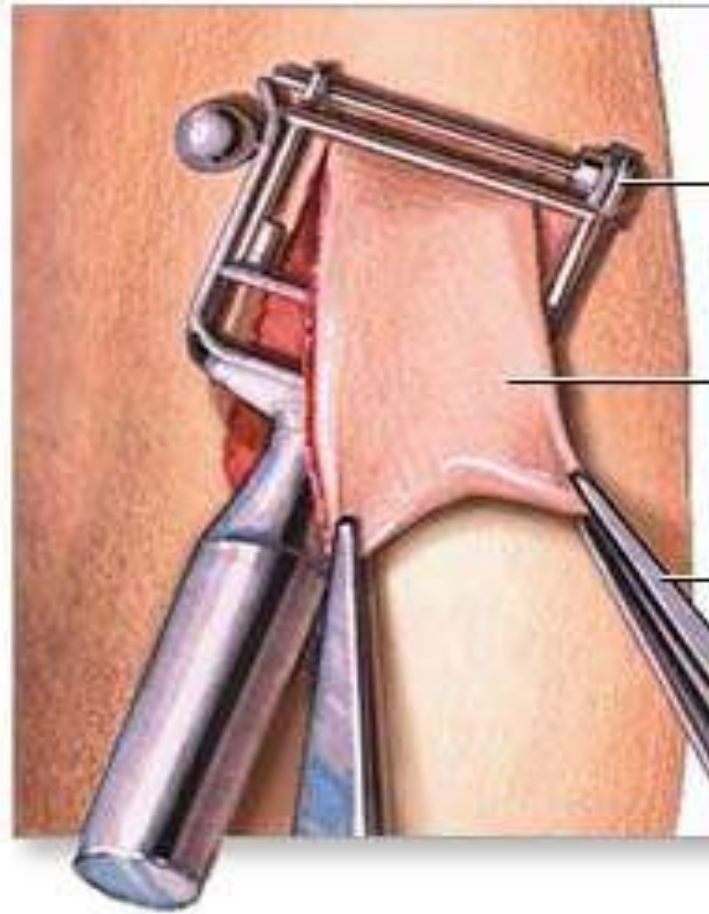
# Stages of recovering from a severe burn

- **Critical care and in-hospital recuperation**
- **Post hospitalization rehabilitation and reintegration**
- **Long term adaptation**

# Critical care and in-hospital recuperation

- For major burns, during the critical care period, a patient is often fighting for his life.
- Because of the loss of their skin, burn survivors are at high risk of infection.
  - Consequently, two primary goals of the burn medical staff are to keep the wounds clean and to close them as soon as possible.
  - Patients with third degree burns undergo skin grafts.

# Skin graft



Dermatome

Skin graft

Forceps



# The prognosis of the patient is determined by

- the extent of the burn
- the age of the patient
- the severity of other medical complications
- the quality of care available.
- **Adult patients with greater than 40% TBSA burns and without access to specialty burn care facilities are unlikely to live.**

# Psychological challenges of the in-hospital stage of burn recovery

- Pain
- Poorly controlled pain can interfere with wound healing and physical and psychological rehabilitation.
- Post Traumatic Stress Disorder
- Depression and hopelessness

# Post hospitalization rehabilitation and reintegration

- Can take several years
- People with severe burns will need multiple reconstructive surgeries
- Physical and occupational therapy
- Healing is not a linear process. There are often setbacks.
- Burns across joints can limit the range of motion and thus limit functioning.
- The rehabilitation of hand burns is particularly challenging.

# Psychological Challenges

- Frustration with slow progress
- Depression
- PTSD
- Start to face the social ramifications of enduring burn scars
- Risk for family conflict especially if there was a pre-existing problem.
  - Taking care of a burn survivor can tax the time, financial and emotional resources of a family.

# Long term adjustment to burns

- Return to work or school
- After 3 years, about 28% of burn survivors have not returned to work.

# Psychological Challenges

- **grieving the loss of one's pre-burn appearance and functioning**
- **adapting to and accepting one's post-burn body**
- **Socially adapting to being visibly different.**

# Long Term Outcomes

- A majority of burn survivors appear to adapt well in the long run.
- A sizable minority don't adjust well.
- Approximately 30% of long term burn survivors report clinical levels of depression.
- Approximately, 35% of burn survivors evidence PTSD at 1 month postburn. At 2 years postburn 25% met criteria for PTSD.



# **Body Image, Stigmatization and Social Integration after a Burn Injury**

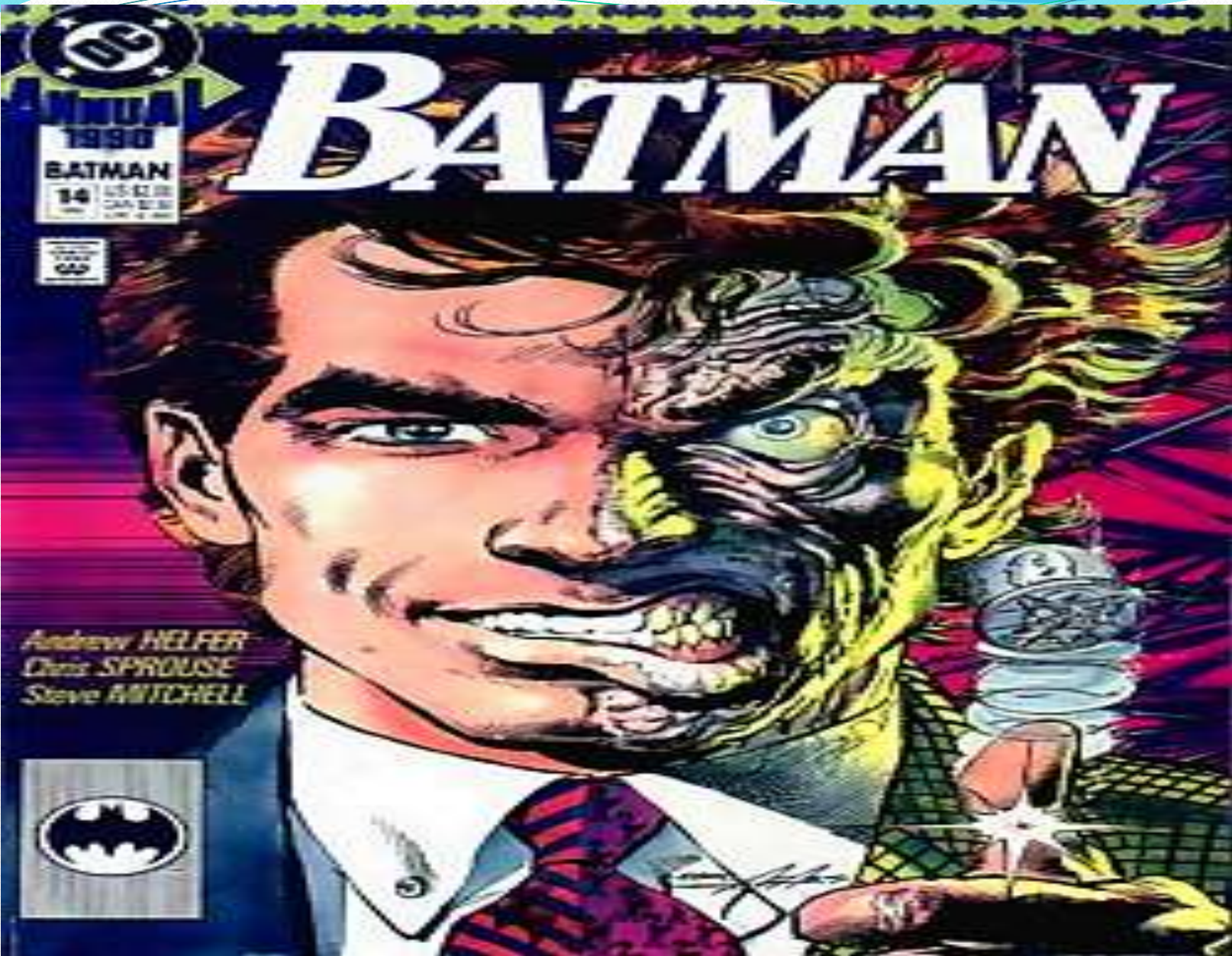


# Stigmatization

- **The process of ascribing negative characteristics to a person or group that is judged to be different and, based on this negative stereotype, the stigmatized person or group is treated in a negative manner resulting in social and/or material losses.**

# Cultural Background

- Social “problems” with “differences” are not inherent to a person but result from the person-environment fit.
- Historically, across many cultures, physical differences have been vilified.
  - e.g., Snow White; Cinderella
- In 21<sup>st</sup> century global corporate capitalism, physical appearance has been highly commodified, and the dehumanization of disfigurement has been magnified.



Andrew HELFER  
Chris SPYROUSE  
Steve MITCHELL





# Interpersonal stigmatization

- In artificial scars studies, when a scarred as opposed to a non-scarred person is in a public places, other people are more likely to maintain a greater physical distance from the scarred actors. Moreover, strangers minimized their social interaction with scarred actors and were less likely to offer them help.

# **New Assessment Questionnaires**

- **Satisfaction with Appearance Scale**
- **Social Comfort Questionnaire**
- **Perceived Stigmatization Questionnaire**

# Interpersonal Stigmatizing behaviours

- **staring**
- **pointing**
- **startled responses**
- **ignoring**
- **avoidance**
- **confused behaviour**
- **name-calling**
- **intrusive questions**
- **teasing**
- **bullying**
- **discrimination**

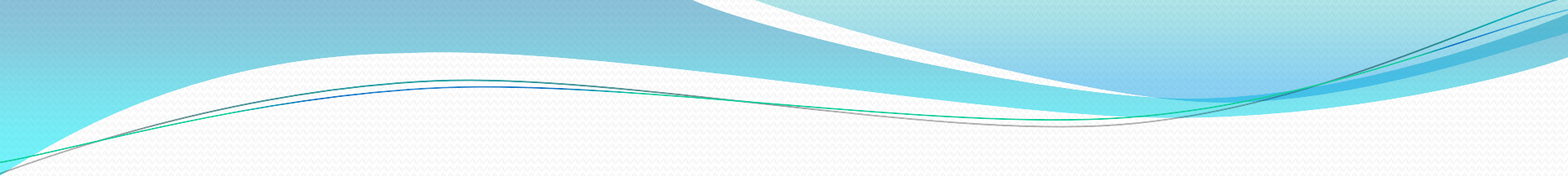
# Perceived Stigmatization Questionnaire

- Absence of friendly behaviour
- Confused behaviour and staring
- Hostile behavior such as teasing and bullying



# **1) How does the body image of burn survivors compare with non-burn comparison groups?**

- **Two studies have compared pediatric burn survivors (ages 8 – 18) with a non-burned pediatric sample on body image measures.**
- **Neither study found average differences between groups on body image measures.**




**2) What is the relationship between scarring and psychosocial outcomes such as body image and depression?**

# Scar Severity

- Across studies, scar severity tended to have
- a low to moderate correlation with body image dissatisfaction ( $.15 < r < .40$ )
- a low relationship with social comfort ( $-.02 < r < -.20$ )
- a low relationship with depression ( $.01 < r < .25$ )

# Scar Visibility

- The relationship between scar location and visibility and psychosocial outcomes tend to be to low ( $r < .25$ ).



**The relationship between scarring and body image is dynamic and influenced by psychological and social variables.**

- E.g., scar severity and importance of appearance

# Correlations between scar severity and body image

	Scar Severity/Body Image Correlation
Low Importance Appearance	-.12
Medium Importance Appearance	-.40
High Importance Appearance	-.78

## **4) What is the relationship between scarring and the experience of stigmatizing behavior?**

- **Of the type of stigmatizing behaviors, confused responses and starring have the strongest relationship with scar severity.**
- **Among pediatric burn survivors, there is modest evidence that scar severity is related to teasing/bulling.**
- **Children with multiple differences/disabilities are at likely at the highest risk.**
- **Parent may be unaware of their children being teased/bullied.**

## **5) What interventions are effective in treating psychosocial complications related to scarring?**

- **Alter one's appearance**
- **Psychological interventions**
- **Peer-to-peer support**
- **Social interventions**



# Alter one's appearance

- Effect of burn reconstructive surgery has not been tested.
- One study comparing “spray-on skin” for improving the appearance of burn scars or a waitlist control group.

# Cognitive Behavioral Therapy

- Cognitive model posits that a person with visible differences can get stuck in a vicious cycle of self disparaging thoughts, anticipating rejection and social avoidance.
- Break this cycle by teaching burn survivor specific social skills and building a social life.
- E.g., confident body language, making eye contact, smiling to put someone at ease, having a brief explanation of “what happened,” guiding conversations, assertive responses to rude behavior
- One study testing a social skills intervention (Blakeney et al)

# Peer to peer support

- Phoenix Society for Burn Survivors
- [www.phoenix-society.org](http://www.phoenix-society.org)
- Burn Camps

# **Social Milieu Interventions**

- **School Reentry Programs**
- **Family Therapy**

# Political Interventions

- **Changing Faces and the Campaign for Face Equality**
- **[www.changingfaces.org.uk](http://www.changingfaces.org.uk)**
- **[www.iface.org.uk/doc](http://www.iface.org.uk/doc)**
- **Civil and human rights of people with visible distinctions**
- **Part of a larger disabilities rights movement working for social and political rights, social inclusion and citizenship**



# Conclusions

# Research Priorities

- More attention needs to be paid to research design
- Develop and use high quality assessment instruments
- Randomized clinical trials of interventions
- Investigate the epidemiology of body image and social anxiety issues among long term burn survivors
- More studies on family functioning and well-being
- Need studies on burn clinicians and stress

# **Develop quality assessment instruments**

- **Recent reviews of functional outcome, employment status, risk factors for scar complications and psychosocial outcomes among burn survivors all stated that a lack of quality assessment tool hampers research.**



# Three suggestions for the development of psychological instruments

- Conjoint factor analysis
- Test measurement invariance
- Develop cut-off scores

# Clinical Priorities

- Routine screening for psychological issues
- Test effectiveness of interventions
- Creating practical interventions that reach our target population

# **Social and Political Advocacy**

- **Perhaps, most importantly, we need to expand the social activism started by the Phoenix Society and Changing Faces to fight for the civil and human rights of people with visible distinctions.**

# Political goals

- **This includes the struggle for the economic enfranchisement of poor people, particularly women.**
- **In the U.S., this includes the struggle for universal healthcare.**
- **A more loving and tolerant society will greatly facilitate survivors' recovery from major burns.**

# Useful references

- Bessell, A., & Moss, T. P. (2007). "Evaluating the effectiveness of psychosocial interventions for individuals with visible differences: A systematic review of the empirical literature." *Body Image*, 4, 227-238.
- Blakeney, P., Partridge, J., & Rumsey, N. (2007). "Community integration". *Journal of Burn Care & Research*, 28, 598-601.
- Dissanaik, S., & Rahimi, M. (2009). "Epidemiology of burn injuries: Highlighting cultural and socio-demographic aspects." *International Review of Psychiatry*, 21, 505-511.
- Edelman, L. S. (2007). "Social and economic factors associated with the risk of burn injury." *Burns*, 33, 958-965.

# More References

- Lawrence, J. W., Fauerbach, J. A., & Thombs, B. D. (2006). "A test of the moderating role of importance of appearance in the relationship between perceived scar severity and body-esteem among adult burn survivors." *Body Image, 3, 101-111.*
- Lawrence, J. W., Mason, S. T., Schomer, K., & Klein, M. B. (2012). Epidemiology and impact of scarring after burn injury: a systematic review of the literature. *Journal Of Burn Care & Research, 33(1), 136-146.*
- Lawrence, J. W., Rosenberg, L., Rimmer, R. B., Thombs B. D., & Fauerbach, J. A. (2010). Perceived stigmatization and social comfort: Validating the constructs and their measurement among pediatric burn survivors." *Rehabilitation Psychology, 55, 360-371.*

# More References

- McKibben, J. B. A., Ekselius, L., Girasek, D. C., Gould, N. F., Holzer, C., III, Rosenberg, M., et al. (2009). “Epidemiology of burn injuries II: Psychiatric and behavioural perspectives.” *International Review of Psychiatry*, 21, 512-521.
- Rumsey, N., & Harcourt, D. (2007). Visible difference amongst children and adolescents: issues and interventions. *Developmental Neurorehabilitation*, 10, 113-123.
- Partridge, J. (2006). “From Burns Unit to Boardroom.” *British Medical Journal*, 332, 956-959. Thompson, A., & Kent, G. (2001). “Adjusting to disfigurement: Processes involved in dealing with being visibly different.” *Clinical Psychology Review*, 21, 663-682.

# More References

- Peck, M. D. (2011). Epidemiology of burns throughout the world. Part I: Distribution and risk factors. *Burns*, 37(7), 1087-1100.
- Peck, M. D. (2012). Epidemiology of burns throughout the World. Part II: Intentional burns in adults. *Burns*, 38(5), 630-637.